

# **OWNER'S MANUAL 430429-232**

Revised November 17, 2004

**IMPORTANT:** Read these instructions before installing, operating, or servicing this system.

## **ACCU-CHARGER/R-SERIES MULTIPLE CIRCUIT**

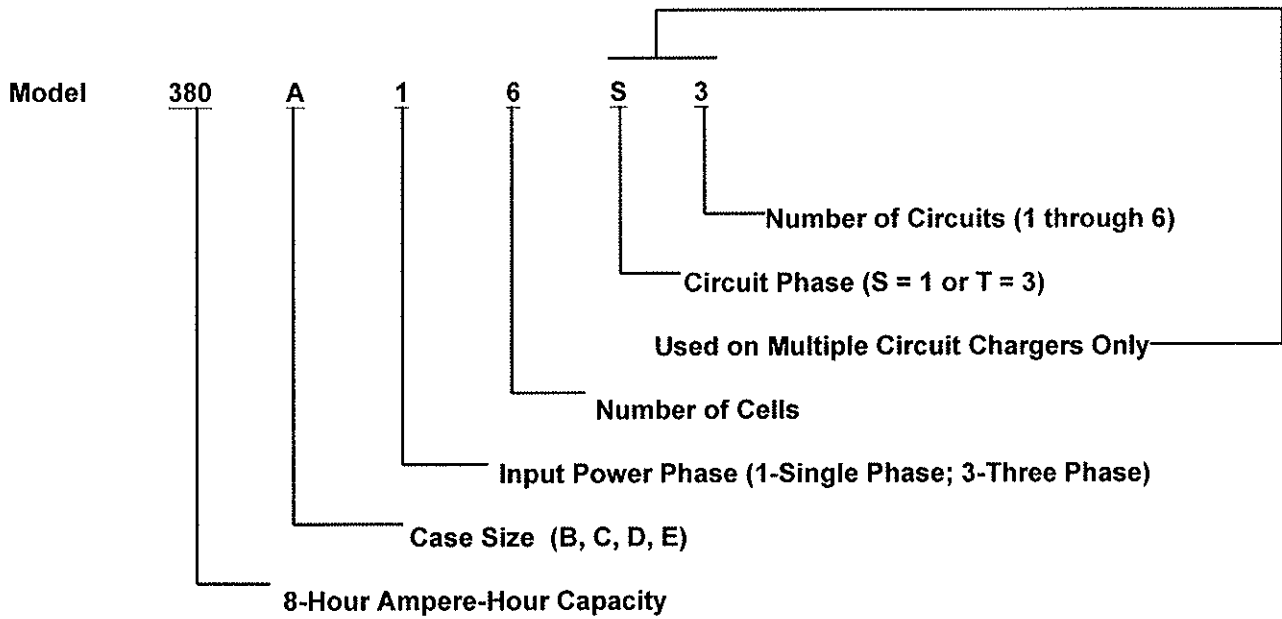
**Silicon Diode Ferroresonant  
Transformer type  
Battery Charger**

**DO NOT DESTROY**

**AMETEK/PRESTOLITE POWER , TROY, OHIO 45373-1099, U.S.A.**

**NOTE:** Information regarding obtaining additional copies of this manual is located in the Introduction chapter of this manual.

A battery charger is identified by model number. Incorporated into the model number is the 8-hour ampere-hour capacity, case size, input power phase, and number of cells in battery for which charger is intended. The following example explains the basic model numbering arrangement.



**NOTE:** This information is required for ordering certain replacement/service parts.

---

<b>INTRODUCTION</b> .....	<b>1</b>
How to use this Manual .....	1-1
Equipment Identification .....	1-1
Receipt of Equipment .....	1-1
 <b>SAFETY INSTRUCTIONS AND WARNINGS</b> .....	 <b>2</b>
 <b>DESCRIPTION OF EQUIPMENT</b> .....	 <b>3</b>
 <b>INSTALLATION</b> .....	 <b>4</b>
Location .....	4-1
Environmental Characteristics .....	4-1
Grounding .....	4-1
Line Voltage Changeover Instructions .....	4-2
Line Connections to Battery Charger .....	4-2
Charging Cable Connectors .....	4-3
Pre-operation Checks .....	4-3
 <b>OPERATION</b> .....	 <b>5</b>
Preliminary .....	5-1
Normal or Daily Charge .....	5-1
Equalize or Weekend Charge .....	5-1
Manual Stop .....	5-2
Battery Discrimination .....	5-2
Refresh Charge .....	5-2
Backup Timer Shutdown .....	5-2
Battery Disconnect Shutdown .....	5-3
Low Current Shutdown .....	5-3
AC Power Fail .....	5-3
 <b>MAINTENANCE</b> .....	 <b>6</b>
Inspection and Cleaning .....	6-1
Lubrication .....	6-1
Charging Rate Adjustment .....	6-1
Fuse Replacement .....	6-2
Silicon Diode Testing .....	6-2
Capacitor Testing .....	6-3
Troubleshooting .....	6-4
 <b>OPTIONS</b> .....	 <b>7</b>
Parallel Charging — Option 002 .....	7-1
Series Charging — Option 003 .....	7-1
Remote Charge Control — Option 101 .....	7-2
Fused Disconnect Switch — Option 500 .....	7-2
 <b>PARTS LIST</b> .....	 <b>8</b>
 <b>ELECTRONIC PRINTED CIRCUIT BOARD EXCHANGE SERVICE POLICY</b>	
 <b>DIAGRAMS</b>	
 <b>WARRANTY</b>	

# INTRODUCTION

## How To Use This Manual

**IMPORTANT:** It is especially important that all charger internal components be kept clean and dry, and all electrical connections as tightened as instructed in the Maintenance chapter of this manual. Replace any precautionary or instruction label that cannot be easily read.

Throughout this manual, the words **WARNING**, **CAUTION**, and **NOTE** may appear. Pay particular attention to the information provided under these headings. These special annotations are easily recognized as follows:

**WARNING** gives information regarding possible personal injury. Warnings will be enclosed in a box such as this.

**CAUTION** refers to possible equipment damage. Cautions will be shown in bold type.

*NOTE* offers helpful information concerning certain operating procedures. Notes will be shown in italics.

## Equipment Identification

The unit's identification number (specification, model, serial number) usually appears on a nameplate attached to the front panel.

## Receipt Of Equipment

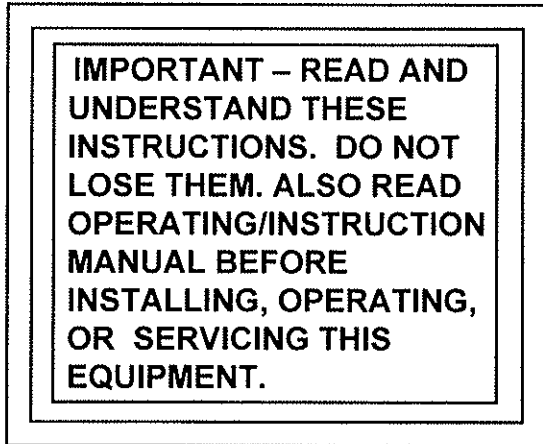
When you receive the equipment, check it against the invoice to make sure it is complete and inspect the equipment for possible damage due to shipping. If there is any damage, notify the carrier immediately to file a claim. Furnish complete information concerning damage claims or shipping errors to the company shown on the cover of this manual. Include all equipment identification numbers and group part numbers (if any) as described above along with a full description of the parts in error.

Move the equipment to the site of installation before uncrating. Use care to avoid damaging the equipment when using bars, hammers, etc., to uncrate the unit.

Additional copies of this manual may be purchased by contacting the company shown on the cover of this manual. Include the Owner's Manual number and equipment identification numbers.

# SAFETY INSTRUCTIONS AND WARNINGS

## FOR OPERATION OF BATTERY CHARGING EQUIPMENT



### A. General

Battery charging products can cause serious injury or death, or damage to other equipment or property, if the operator does not strictly observe all safety rules and take precautionary actions.

Safe practices have developed from past experience in the use of charging equipment. These practices must be learned through study and training before using this equipment. Anyone not having extensive training in battery charging practices should be taught by experienced operators.

Only qualified personnel should install, use, or service this equipment.

### B. Shock Prevention

Bare conductors, or terminals in the output circuit, or ungrounded, electrically-live equipment can fatally shock a person. To protect against shock, have competent electrician verify that the equipment is adequately grounded and learn what terminals and parts are electrically HOT.

The body's electrical resistance is decreased when wet, permitting dangerous current to flow through the body. Do not work in damp area without being extremely careful. Stand on dry rubber mat or dry wood and use insulating gloves when dampness or sweat cannot be avoided. Keep clothing dry.

1. Installation and Grounding of Electrically Powered Equipment – Electrical equipment must be installed and maintained in accordance with the National Electrical Code, NFPA 70, and local codes. A power disconnect switch must be located at the equipment. Check nameplate for voltage and phase requirements. If only 3-phase power is available, connect *single-phase* equipment to only two wires of the 3-phase line. **DO NOT CONNECT** the equipment grounding conductor (lead) to the third live wire of the 3-phase line as this makes the equipment frame electrically HOT, which can cause a fatal shock.

If a grounding lead (conductor) is part of the power supply cable, be sure to connect it to a properly grounded switch box or building ground. If not part of the supply cable, use a separate grounding lead (conductor). Do not remove a ground prong from any plug. Use correct mating receptacles. Check ground for electrical continuity before using equipment.

The grounding conductor must be of a size equal to or larger than the size recommended by Code or in this manual.

2. Charging Leads – Inspect leads often for damage to the insulation. Replace or repair cracked or worn leads immediately. Use leads having sufficient capacity to carry the operating current without overheating.
3. Battery Terminals – Do not touch battery terminals while equipment is operating.
4. Service and Maintenance – Shut OFF all power at the disconnect switch or line breaker *before* inspecting, adjusting, or servicing the equipment. Lock switch OPEN (or remove line fuses) so that the power cannot be turned ON accidentally. Disconnect power to equipment if it is to be left unattended or out of service.

Disconnect battery from charger. Measure voltage on capacitors and discharge through an insulated screwdriver if there is any voltage reading.

Keep inside parts clean and dry. Dirt and/or moisture can cause insulation failure. This failure can result in high voltage at the charger output.

### C. Burn And Bodily Injury Prevention

The battery produces very high currents when short circuited, and will burn the skin severely if in contact with any metal conductor that is carrying this current. Do not permit rings on fingers to come in contact with battery terminals or the cell connectors on top of the battery.

Battery acid is very corrosive. Always wear correct eye and body protection when near batteries.

### D. Fire And Explosion Prevention

Batteries give off explosive flammable gases which easily ignite when coming in contact with an open flame or spark. Do not smoke, cause sparking, or use open flame near batteries. Charge batteries only in locations which are clean, dry, and well ventilated. Do not lay tools or anything that is metallic on top of any battery. All repairs to a battery must be made only by experienced and qualified personnel.

### E. Arcing And Burning Of Connector

To prevent arcing and burning of the connector contacts, be sure the charger is OFF before connecting or disconnecting the battery. (If the charger is equipped with an ammeter, the ammeter should not indicate current flow.) Always connect battery before turning charger ON.

### F. Medical And First Aid Treatment

First aid facilities and a qualified first aid person should be available for each shift for immediate treatment of electrical shock victims.

**EMERGENCY FIRST AID: Call physician and ambulance immediately. Use First Aid techniques recommended by the American Red Cross.**

**DANGER: ELECTRICAL SHOCK CAN BE FATAL. If person is unconscious and electric shock is suspected, do not touch person if he or she is in contact with charging leads, charging equipment, or other live electrical parts. Disconnect (open) power at wall switch and then use First Aid. Dry wood, wooden broom, and other insulating material can be used to move cables, if necessary, away from person. IF BREATHING IS DIFFICULT, give oxygen. IF NOT BREATHING, BEGIN ARTIFICIAL BREATHING, such as mouth-to-mouth. IF PULSE IS ABSENT, BEGIN ARTIFICIAL CIRCULATION, such as external heart massage.**

IN CASE OF ACID IN THE EYES, flush very well with clean water and obtain professional medical attention immediately.

### G. Equipment Warning Labels

Inspect all precautionary labels on the equipment. Order and replace all labels that cannot be easily read.

# DESCRIPTION OF EQUIPMENT

## Charger

The basic charging circuit is the silicon diode, rectifier-type with ferroresonant transformer (s). This ferroresonant transformer design regulates charging current by allowing the battery to determine its own charge cycle rate in accordance with its state of discharge. It provides a constantly-tapering charge that eliminates the possibility of overcharging, even with line voltage variations of  $\pm 10\%$ . Single-phase input chargers have one transformer, three-phase input chargers have two. The charger is internally protected from overload and short circuits.

When charging lead acid batteries, with the same number of cells and ampere-hour capacity as shown on charger nameplate, the charging time will be approximately 10 hours. Batteries of smaller or larger ampere-hour capacities can also be charged, but will require shorter or longer charging, respectively.

## Charge Control

The AC500 Control is provided as the standard charger control. It utilizes either a voltage/time (VT) charge termination or a patented  $pT/dV/dT$  charge termination technique which eliminates excessive gassing by returning approximately 107% of the amp-hours removed from the battery.

Features of the AC500 Control include manual equalize, manual stop, back-up timer protection, two charge termination methods, 80% voltage point selection, high and low battery voltage discrimination, and AC power fail recovery.

The AC500 Control is "matched" to the output voltage of the charger by means of a printed circuit board mounted DIP switch. It will operate on 6, 12, 18, 24, 36, and "optional" cell batteries. "Optional" is provided to accommodate batteries between 6 and 36 cells that are not listed above.

The status of a normal charge cycle is indicated by the four LEDs on the front panel. The "80% Charged" LED will light when the battery voltage reaches the 80% charged voltage. This voltage may be 2.37 volts/cell or 2.45 volts/cell nominal, depending on the status of DIP switch S1-7. The "Charge Complete" LED will light only if the battery has completed the charge cycle and is ready for use. The "Abnormal Shutdown" LED will light if the charger terminates a charge prematurely. See the Troubleshooting chapter of this manual to determine the cause of the fault. The "Equalize" LED will light solid when an equalize charge is requested by pressing the EQUALIZE push button. The "Equalize" LED will flash when the charger is equalizing the battery.

**WARNING: Do not connect a battery to this charger if any LED is lit. Do not disconnect a battery from this charger while a charge is in progress. Otherwise, arcing and burning of connector parts or a battery explosion may result. Batteries produce explosive gases. Keep sparks, flame, and cigarettes away. Ventilate when charging in an enclosed area. Always shield eyes when working near batteries.**

# INSTALLATION

## Location

For best operating characteristics and longest unit life, take care in selecting an installation site. Avoid locations exposed to high humidity, dust, high ambient temperature, or corrosive fumes. Moisture can condense on electrical components, causing corrosion or shorting of circuits (especially when dirt is also present).

Adequate air circulation is needed at all times in order to assure proper operation. Provide a minimum of 6 inches of free air space at rear and sides of the unit. Make sure that ventilation openings are not obstructed.

## Environmental Characteristics

Operating Characteristics	0°C to 40°C (32°F to 104°F)
Operating Altitude	To 2000 Meters (6562 Feet)
Operating Humidity	80% up to 31°C, decreasing to 50% at 40°C, non-condensing  80% up to 88°F decreasing to 50% at 104°F, non-condensing

## Grounding

The frame of the power source must be grounded for personnel safety. Where grounding is mandatory under state or local codes, it is the responsibility of the user to comply with all applicable rules and regulations. Where no state or local codes exist, it is recommended that the National Electrical Code be followed.

In addition to the usual function of protecting personnel against the hazard of electrical shock due to fault in the equipment, grounding serves to discharge the static electrical charges which tend to build up on the surfaces of equipment. These static charges can cause painful shock to personnel, and can lead to the erroneous conclusion that an electrical fault exists in the equipment.

If a charger is to be connected to the AC power supply with a flexible jacketed cable, one having a separate grounding conductor should be used. When included in cable assembly, grounding conductor will be green, green with a yellow stripe, or bare. When connecting input power to charger (as instructed in Line Connection to Battery Charger section of this manual), connect grounding conductor to equipment grounding terminal (stud with a green nut and a cup washer and identified by symbol  $\perp$ ), taking care to make a good electrical connection. Connect other end of grounding conductor to the system ground.

If, for any reason, an input cable which does not include a grounding conductor is used, the equipment must be grounded with separate conductor. Minimum size and color coding requirements must be in accordance with any applicable state or local code, or the National Electrical Code.

If metallic armored cable or conduit is used, the metal sheathing or conduit must be effectively grounded as required by state or local code, or the National Electrical Code.

If a system ground is not available, the charger frame must be connected to a driven ground rod (at least 8 ft [2438 mm] long), or to a water pipe that enters the ground not more than 10 ft (3048 mm) from the charger. A grounding conductor must be connected to the rod or pipe in a manner that will assure a permanent and effective ground. The conductor must be sized in accordance with any applicable state or local code, or by the National Electrical Code. If in doubt, use the same size conductor as is used for the conductors supplying power to the charger.

**WARNING: ELECTRIC SHOCK  
 HAZARD – Under no circumstance  
 should you use a grounding  
 conductor with a current carrying  
 capacity less than the ampere  
 rating shown in Table 4-1.**



LINE AMPS	DISCONNECT SWITCH *	BRANCH FUSE SIZE (AMPERES)	COPPER CABLE SIZE AWG **	
			POWER	GROUND
0-2.5	30A	5	No. 14	No. 14
2.6-4.5	30A	7	No. 14	No. 14
4.6-7.5	30A	10	No. 14	No. 14
7.6-12	30A	15	No. 14	No. 14
12.1-16	30A	20	No. 12	No. 12
16.1-18	30A	25	No. 10	No. 10
18.1-22	30A	30	No. 10	No. 10
22.1-24.5	60A	35	No. 8	No. 10
24.6-32.5	60A	40	No. 8	No. 10
32.6-40	60A	50	No. 8	No. 10
40.1-45	60A	60	No. 6	No. 10
45.1-57.5	100A	80	No. 4	No. 8
57.6-78	100A	100	No. 2	No. 8
78.1-102.5	200A	125	No. 2	No. 6
102.6-135	200A	150	No. 1/0	No. 6

**Table 4-1 Recommended AC Input and Branch Fusing**

The above table (Table 4-1) is based on 75°C (167°F) rated conductors and 40°C (104°F) ambient temperatures. Refer to National Electrical Code (1999) Tables 310-16 corrected to 40°C (104°F).

\* For 115, 208, and 230-volt lines, use 250-volt disconnect switch.  
 For 440-480, 575-volt lines, use 600-volt disconnect switch.

\*\* Two conductors and ground conductor required for single phase.  
 Three conductors and ground conductor required for three phase.

Recommended minimum size of grounding conductors (based on National Electrical Code 1999 – Table 250-95).

### Line Voltage Changeover Instructions

1. Determine if the charger is connected for available line voltage. A label located near AC input terminals is marked with the AC voltage for which the charger is factory connected.
2. If charger is not connected correctly, check serial nameplate to determine that charger is equipped to be connected for available line voltage. If charger is suitably equipped, make voltage change-over connections by following instructions on AC INPUT label inside charger.
3. If charger is reconnected, check input fuse (s) ratings with ratings specified on label and replace if necessary.

**CAUTION: INCORRECT CONNECTIONS AND INCORRECT FUSE SIZE can damage this equipment. Follow voltage changeover instructions carefully.**

### Line Connections to Battery Charger

Follow local code requirements if different than instructions in this manual.

1. Turn charger OFF.
2. Be sure charger is connected correctly for available line voltage as instructed above.
3. On charger nameplate, note the AC input amperes corresponding to the line voltage to which charger is to be connected. Use that ampere value to select the proper disconnect switch, fuse, and power cable sizes from Table 4-1. A "WARNING" label inside charger also lists fuse sizes for each line voltage (circled fuse rating is required for internal line voltage connections made at factory).

4. Route AC power input cable in through knock-out provided in side panel of charger cabinet. Securely fasten cable wires to a power input terminal inside charger. Refer to Grounding section of this manual for proper connection of grounding conductor. (Charger cabinet top or side panel, or both, may have to be removed to provide access to terminal block.)
5. With disconnect switch (on AC input power line) in "OPEN" or "OFF" position, connect power cable coming from charger, to the switch. Install fuses in switch.

## Charging Cable Connectors

If connectors are already attached to charging cables, make sure that they're attached so that positive charger polarity will connect to positive battery terminal.

If connectors must be attached to charging cables, follow instructions supplied with connectors.

**CAUTION: Make sure connectors are securely attached to cables (good solder joint or well tightened set screws, whichever is applicable). Be certain that positive charger cable will connect to positive battery terminal. If necessary, trace cables into charger and use supplied connection diagram to determine polarity. The use of a DC voltmeter may show polarity. Improper connections will "blow" output fuse and may cause other damage.**

*Note: If this charger is equipped with certain optional features, the connector attaching procedure may be modified. Refer to OPTIONS chapter of this manual for details.*

## Pre-operation Checks

1. Inspect charger thoroughly for damage; loose screws, nuts, or electrical connections.

**WARNING: ELECTRICAL SHOCK HAZARD – Before inspecting or cleaning inside cabinet, turn OFF and remove fuses of disconnect switch (supplying AC power to charger), disconnect battery, and check for voltage on capacitors. Discharge through insulated screwdriver if there is any reading.**

2. Remove all special tags that are tied to charger. Keep tags with this manual for future reference. Leave all precautionary and instruction labels in place on charger. Carefully read and follow instructions on all tags and labels. Make sure all labels remain visible to anyone operating charger.
3. Make sure all charger cabinet panels are fastened in place, to assure proper flow of ventilating air through cabinet.

# OPERATION

## Preliminary

1. Make sure that charger is installed and grounded as instructed in this manual.
2. Make sure the charge control is set to the proper cell size via the charge control DIP switch cell selector.
3. Turn on main fused disconnect switch that supplies AC power to charger.
4. Maintain electrolyte level in batteries to be charged, as instructed by battery manufacturer. The volume of electrolyte will expand during the charge. Therefore, to avoid overfilling, do not add water until the battery has received at least an 80% charge. This will usually be reached at the time gassing starts.

## Normal or Daily Charge

**WARNING: DO NOT connect a battery to this charger if any LED is lit. Do not disconnect a battery from this charger while a charge is in progress; otherwise, arcing and burning of connector parts or a battery explosion may result. Batteries produce explosive gases. Keep sparks, flame and cigarettes away. Ventilate when charging in an enclosed area. Always shield eyes when working near batteries.**

1. Insure that battery size matches the charger. (Number of cells and ampere-hour capacity are within charger nameplate rating.)
2. Securely engage the battery and charger connectors.
3. After a 5 second delay (all LED's will be lit), the charger will turn on. The "Charge in Progress" LED will indicate charging current.
4. The "80% Charged" LED will light when the battery on charge reaches the 80% charged voltage.
5. The charger will automatically turn off and the "Charge Complete" LED will light when the charge has finished. The light will remain on until the battery is disconnected from the charger.

*NOTE: To disconnect battery from charger before charge is complete, first press the STOP key, then disconnect the battery from the charger.*

## Equalize or Weekend Charge

The AC500 features Auto Equalize every 5th charge cycle. Closing S1-9 disables the auto equalize feature; and an equalize charge request can be performed by pressing the "Equalize" push-button on the control front panel. When Auto Equalize is enabled (S1-9 is open), then the "Equalize" push-button cannot be used to request an equalize charge. The AC500 is shipped with auto equalize feature enabled. With auto equalize disabled, an equalize charge can be selected or de-selected for any charge cycle using the sequence below.

1. Insure that battery size matches the charger. (Number of cells and ampere-hour capacity are within charger nameplate rating.)
2. Securely engage the battery and charger connectors.
3. After a 5 second delay (all LED's will be lit), the charger will turn on. The "Charge in Progress" LED will indicate charging current.
4. Press the "Equalize" key. The "Equalize" LED will light solid. Press the key again to cancel the equalize charge.

*NOTE: The equalize charge cannot be cancelled once the battery reaches the equalize charging period. Press the STOP key to terminate the charge.*

5. The "80% Charged" LED will light when the battery on charge reaches the 80% charged voltage.
6. The battery reaches the normal termination point (pT/dV/dT or VT). However, the battery is charged another 3 hours. The "Equalize" LED will flash during this equalize period.
7. The charger will automatically turn off, and the "Charge Complete" and the "Equalize" LED will light when the equalized charge has finished. The LED's will remain on until the battery is disconnected from the charger.

**WARNING: DO NOT connect a battery to this charger if any LED is lit. Do not disconnect a battery from this charger while a charge is in progress; otherwise, arcing and burning of connector parts or a battery explosion may result. Batteries produce explosive gases. Keep sparks, flame and cigarettes away. Ventilate when charging in an enclosed area. Always shield eyes when working near batteries.**

## Manual Stop

1. To turn the charger off during any part of a charge cycle, press the STOP key. All four LEDs will flash.
2. To restart the charger, disconnect and reconnect the battery. A new charge cycle will begin.

## Battery Discrimination

The AC500 Control has the ability to reject batteries with cell sizes that do not match the cell size that the control is set up for (via DIP switch S1-1 through S1-6). If the battery connected to the charger has an average terminal voltage of greater than 2.30 volts/cell, the charger will not start and all 4 LEDs will flash, then the "Charge in Progress" LED will flash (high battery fault indication). If the battery voltage eventually falls below 2.30 volts/cell, the control will begin a normal charge sequence.

If the battery connected to the charger has an average terminal voltage of less than 1.75 volts/cell, the charger will not start and all 4 LEDs will flash, then the "80% Charged" LED will flash (low battery fault indication). If the battery voltage eventually rises above 1.75 volts/cell, the control will start a normal charge sequence. If the battery connected to the charger has a terminal voltage of less than 1.75 volts/cell and the operator wishes to start the charge regardless of this low battery voltage, the charge cycle will start if both the EQUALIZE and the STOP keys are held pushed in until all LEDs go out (approximately 5 seconds). Release the key at this time.

## Refresh Charge

In order to guarantee that a fully charged battery is always ready for use, a "Refresh" feature has been incorporated into the AC500 Control. If a battery is left connected to the charger for 72 hours after a "Charge Complete" has been reached, the AC500 will start a charge sequence. The running time of this "Refresh" charge will depend on the depth of self-discharge of the battery.

## Backup Timer Shutdown

A backup timer will shut down the charger and all 4 LEDs will flash then the "Charge Complete" LED will flash if the battery on charge does not reach the 80% voltage during the first 10 hours of charging.

Likewise, if the AC500 Control is set to terminate via the pT/dV/dT methodology (DIP switch S1-8 off) and the charger does not reach the termination point within 5 hours after reaching the 80% charged voltage, all 4 LEDs will flash then the "Charge Complete" LED will flash.

**WARNING: DO NOT connect a battery to this charger if any LED is lit. Do not disconnect a battery from this charger while a charge is in progress. Otherwise, arcing and burning of connector parts or a battery explosion may result. Batteries produce explosive gases. Keep sparks, flame, and cigarettes away. Ventilate when charging in an enclosed area. Always shield eyes when working near batteries.**

---

### **Battery Disconnect Shutdown**

If the battery is disconnected from the charger during a charge cycle, the charger will be shutdown. All LEDs will be off.

### **Low Current Shutdown**

If the charger output current falls below a predetermined level, a low current shutdown will occur. All 4 LEDs will flash, then the "Equalize" LED will flash.

### **AC POWER FAIL**

During an AC power failure, the AC500 Control stores key information about the charge cycle. The information is retained by powering some of the control's key components with a battery derived power supply. This causes the control to resume the charge where it left off when the AC power is returned, unaffected timers and equalize requests.

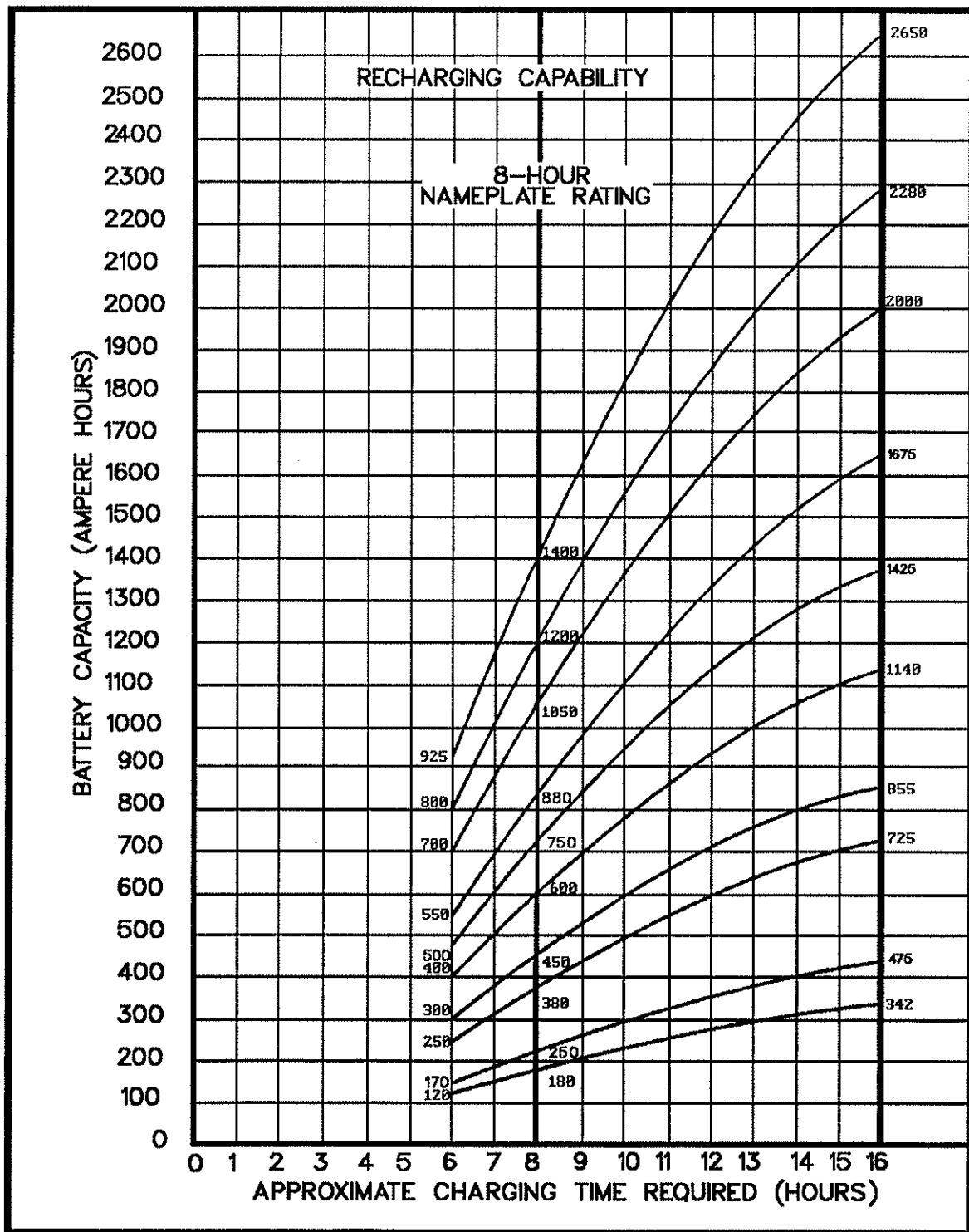


Figure 5-1

# MAINTENANCE

**WARNING: ELECTRICAL SHOCK HAZARD** — Before inspecting or cleaning inside cabinet, turn OFF and remove fuses of disconnect switch (supplying AC power to charger), disconnect battery, and check for voltage on capacitors. Discharge through insulated screwdriver if there is any reading.

## Inspection And Cleaning

For uninterrupted, satisfactory service from this charger, it's necessary to keep unit clean, dry, and well ventilated. At least every three months, or more often as necessary, wipe and blow out all dirt from unit's interior components, with clean, dry air of not over 25 psi (172 kPa) pressure. Use a hand bellows if compressed air isn't available.

Check and tighten all electrical connections as necessary to eliminate unnecessary losses and to avoid subsequent trouble from overheating or open circuits. Check for broken wiring or damaged insulation on wiring.

**WARNING: ELECTRICAL SHOCK HAZARD** — Failure to keep internal parts clean and dry may allow transformer (s) to short out, causing secondary circuits to carry dangerously high voltage.

Be sure to replace all charger cabinet panels after any servicing, to assure proper flow of cooling air through unit and to protect internal components.

**WARNING: ELECTRICAL SHOCK HAZARD** — All cabinet panels must be replaced to protect personnel from contact with hazardous voltages.

## Lubrication

None required.

## Charging Rate Adjustment

Although it is normally not required, the charging rate can be adjusted to accommodate unusually high or low AC power line voltages, unusually high or low ambient temperatures, or aged battery.

A rate adjustment is necessary if battery consumes more water than normal or if its specific gravity after a normal (daily) charge is not within 10 points of its gravity after a weekend (equalizing) charge.

**CAUTION: Before adjusting charging rate, make sure that bad connections or damage to charger isn't affecting charging process. Also make sure proper charging procedure has been followed (thoroughly read Operation chapter of this manual).**

**WARNING: ELECTRICAL SHOCK HAZARD** — Before adjusting charging rate, turn OFF and remove fuses of disconnect switch (supplying AC power to charger), disconnect battery, and check for voltage on capacitors. Discharge through insulated screwdriver if there is any reading.

	Yellow Jumper	Orange Lead	Charger Output
	8 to 9	to 12	Maximum Output
	8 to 10	to 12	↑
	8 to 9	to 11	Higher Output
	8 to 10	to 11	↓
	8 to 9	to 10	Lower Output
	8 to 9	to 8	Minimum Output
	8 to 10	to 9	
8 to 11	to 10		
8 to 11	to 9		
8 to 12	to 10		
8 to 12	to 9		

**Table 6-1 Charging Rate Adjustment Table**

1. Locate charging rate adjustment label inside charger cabinet (same as Table 6-1). The factory set charging rate is indicated on this label by circles around terminal numbers to which YELLOW jumper and ORANGE lead were connected.
2. Locate YELLOW jumper and ORANGE lead on each transformer terminal block present in your unit (one transformer per circuit for single-phase charging circuits, three for three-phase charging circuits.)
3. Mark present location of YELLOW jumper and ORANGE lead on charger rate adjustment label and on Table 6-1 if different from that marked by factory.
4. Reconnect YELLOW jumper and ORANGE lead to the terminals giving the desired change of charging rate, as shown in Table 6-1.

**CAUTION: Do not change connections more than one step before observing effect on charging rate. On fully charged battery (approx. 1.270 to 1.290 specific gravity), rate should not exceed 22% of "MAX AMPS" on charger nameplate. On fully discharged battery (approx. 1.140 specific gravity), rate should not exceed 110% of "MAX AMPS".**

**On three-phase charging circuits, all transformer terminal blocks must be identically connected.**

## Fuse Replacement

The silicon diodes in this charger are protected by a "fast-clearing" type fuse.

**CAUTION: The use of any other type fuse besides the "fast-clearing" type may cause damage to silicon diodes.**

## Silicon Diode Testing

**WARNING: ELECTRICAL SHOCK HAZARD** — Before checking electrical components, turn OFF and remove fuses of disconnect switch (supplying AC power to charger), disconnect battery, and check for voltage on capacitors. Discharge through insulated screwdriver if there is any reading.

1. Disconnect one diode lead to isolate diode from electrical circuitry.
2. Use a good quality ohmmeter (preferably one having a mid-scale value of approximately 50 ohms) to measure resistance values.
3. Zero ohmmeter on R x 1 scale.
4. Record indicated resistance while placing either ohmmeter lead on threaded end of diode and other ohmmeter lead on diode lead.



5. Reverse ohmmeter leads on diode and record indicated resistance.
6. Consider diode good if one resistance reading is infinitely (or very) high and the other is extremely low.

*NOTE: An acceptable low resistance value or range of values can't be given because of different readings from different ohmmeters, and differences in diodes of the same rating.*

## Capacitor Testing

1. Heed WARNING in Silicon Diode Testing section.
2. Disconnect capacitor and connect leads of ohmmeter (set to highest scale) to capacitor terminals.

3. If capacitor is good, pointer will deflect, indicating capacitor is being charged, followed by a deflection in the opposite direction indicating partial discharge.

If there is no deflection, capacitor is "open" and must be replaced. Also, if meter needle moves and stops at one value, replace capacitor.

Replacement capacitors must be ordered from factory. When ordering, supply serial number of charger and microfarad (MFD) or ( $\mu\text{F}$ ) value printed on capacitor.

# Troubleshooting

**DANGER: ELECTRICAL SHOCK HAZARD** — Before checking electrical components, turn OFF and remove fuses of disconnect switch (supplying AC power to charger), disconnect battery, and check for voltage on capacitors. Discharge through insulated screwdriver if there is any reading.

**CAUTION: HIGH VOLTAGE FROM TEST EQUIPMENT** can damage silicon diodes and other parts. Short silicon diodes with extremely short leads, or disconnect, before applying voltage from a "megger" or other high voltage test equipment.

The following chart contains information which can be used to diagnose and correct unsatisfactory operation or failure of various components of the unit. Each malfunction is followed by a suggested checking or inspection procedure. Refer to Connection/Schematic Diagram in the Diagrams chapter included in this manual.

## Troubleshooting Guide

### **No charging current (Ammeter reads zero)**

Check line voltage.

*Close fused disconnect switch or repair open circuit.*

Check for proper line voltage.

*Refer to Line Voltage Changeover instructions in Installation chapter.*

Check for blown fuses.

*Replace blown fuses. See Table 4-1 for proper fuse sizes.*

Check for internal short circuit (diode, winding, wiring).

*Repair short circuit, or replace faulty component.*

Check for "open" battery circuit.

*Clean and tighten connections, especially battery cable connections.*

Check Charge Control.

*If control has electromechanical timer, check contacts. If they are not closing, repair or replace timer.*

*Connect a jumper from the red-white lead of Control Transformer T1 to the red lead of Contactor K1 coil. If charger starts and ammeter shows charging current when a battery is connected, check further for faulty printed circuit card on control and replace as necessary.*

Check output circuit fuses. If fuse has blown, check for problem causing fuse to blow.

a. *Reverse battery connections, if polarity is wrong.*

b. *Determine whether a diode is shorted. Refer to Silicon Diode Testing in Maintenance chapter.*

### **Low charging current at beginning of cycle (battery fully discharged)**

Check for failed capacitor (s) (one or more).

*Replace capacitor if can is ruptured or fails test. Refer to Capacitor Testing in Maintenance chapter.*

Check charging rate for "too low" adjustment.

*Refer to Charging Rate Adjustment in Maintenance chapter.*

Check line voltage for connection to proper input voltage.

*Refer to Line Voltage Changeover instructions in Installation chapter.*

Check battery for one or more defective cells.

### **Less than rated output on fully discharged battery (approximately 1/2 rated output) (3-phase chargers only)**

Check input fuses (one probably blown). Check for either a shorted transformer, or wiring short circuit.

*Replace as necessary.*

### **High charging current at beginning of cycle (battery overcharged)**

Check charging current for "too high" adjustment.

*Refer to Charging Rate Adjustment in Maintenance chapter.*

### **Charger does not shut OFF automatically or start automatically**

Check Charge Control.

1. If equipped with electromechanical timer

*A. Check timer switch contacts. If they are "welded" together and show continuity when timer is off, replace timer.*

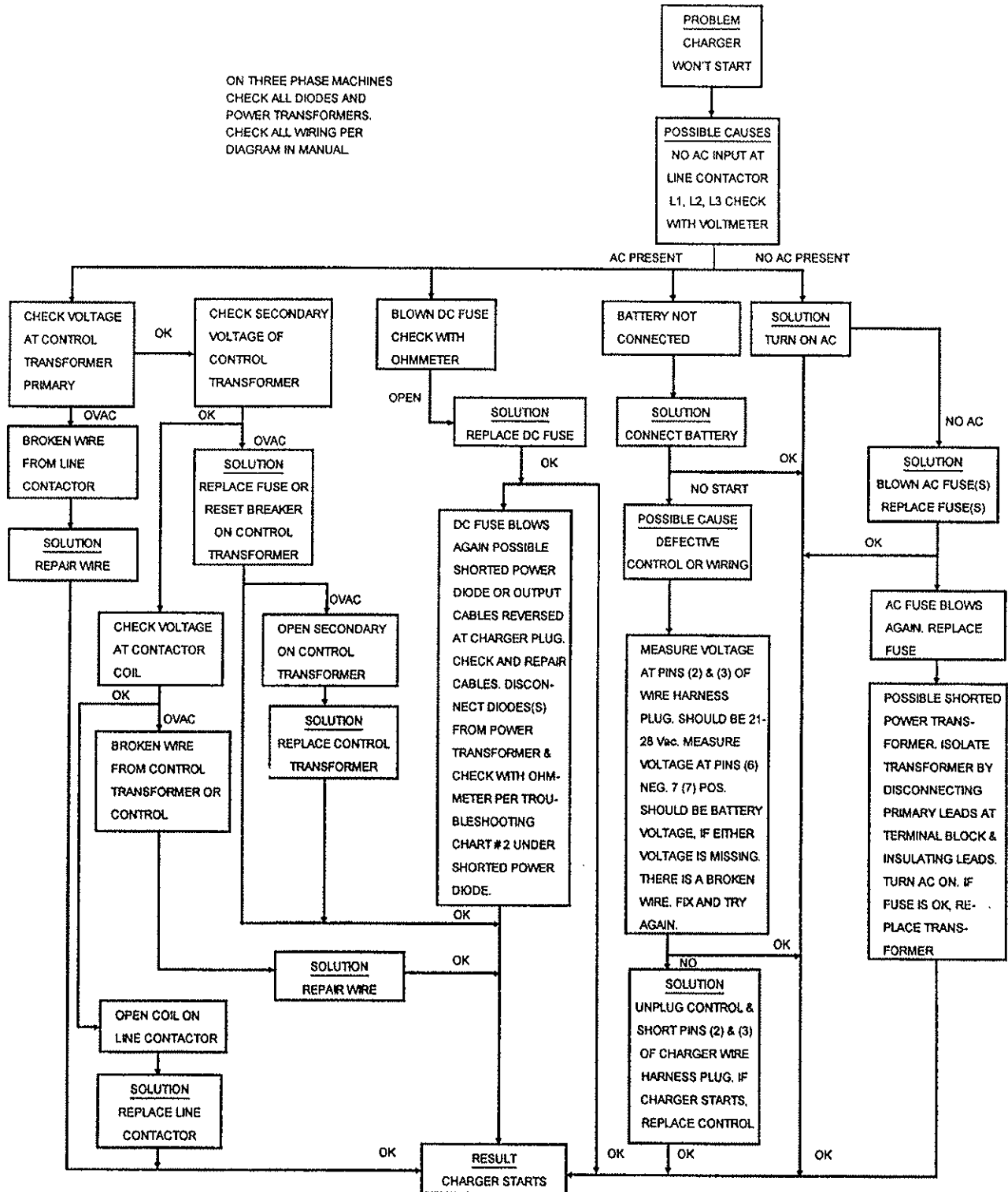
*B. Check to see if timer control motor is running.*

*C. Replace timer if there is not continuity of timer motor field. Check AC power supply to motor.*

2. If charger does not start automatically, check for 24 volts AC between the red-white lead and fuse F3 of control transformer T1. If 24V AC is present, connect a jumper from the red-white lead of control transformer T1 to the red lead of contactor K1 coil. If charger starts, check further for faulty printed circuit card on control and replace as necessary.

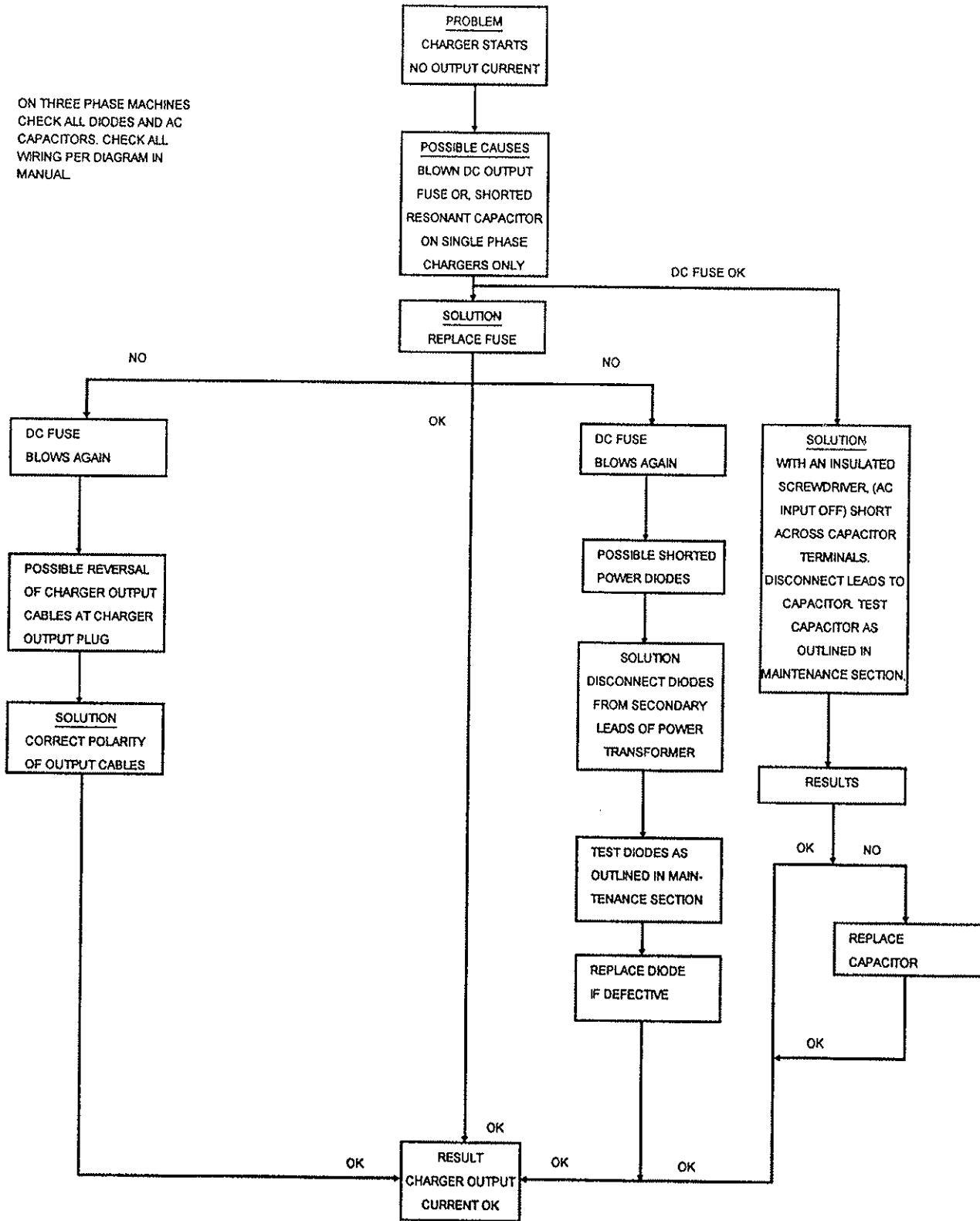
3. If charger does not stop automatically when equipped with voltage time or DV/DT controls, check to be sure charging voltage rises above 2.37 volts/cell during the cycle. If not, see low charging current or less than rated output above. If battery on-charge voltage rises above 2.37 volts/cell during the cycle, check for defective control printed circuit card.

**DANGER: ELECTRICAL SHOCK HAZARD** — Before checking electrical components, turn OFF and remove fuses of disconnect switch (supply AC power to charger), disconnect battery, and check for voltage on capacitors. Discharge through insulated screwdriver if there is any reading.

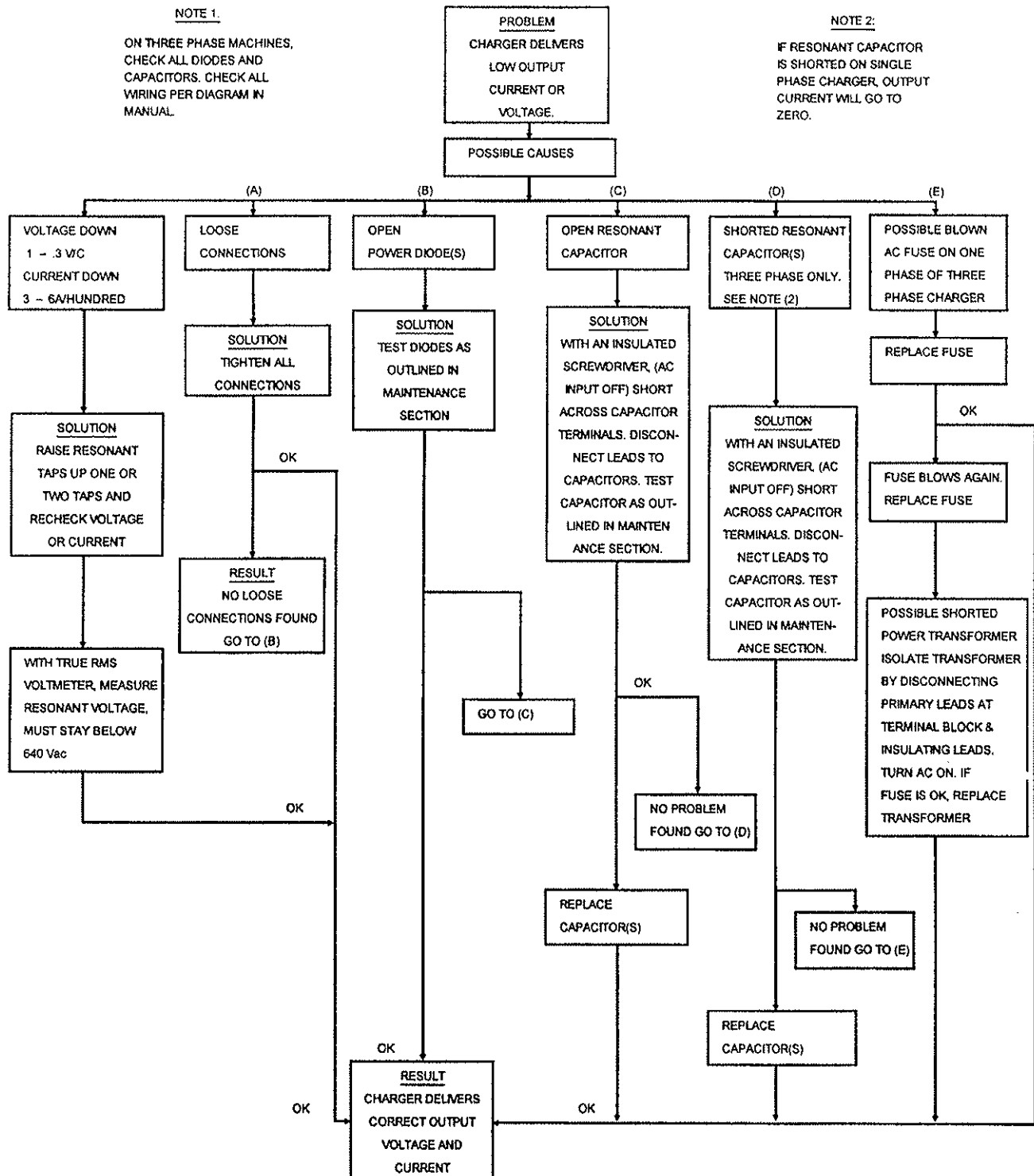


**DANGER: ELECTRICAL SHOCK HAZARD** — Before checking electrical components, turn OFF and remove fuses of disconnect switch (supply AC power to charger), disconnect battery, and check for voltage on capacitors. Discharge through insulated screwdriver if there is any reading.

ON THREE PHASE MACHINES  
 CHECK ALL DIODES AND AC  
 CAPACITORS. CHECK ALL  
 WIRING PER DIAGRAM IN  
 MANUAL



**DANGER: ELECTRICAL SHOCK HAZARD** — Before checking electrical components, turn OFF and remove fuses of disconnect switch (supply AC power to charger), disconnect battery, and check for voltage on capacitors. Discharge through insulated screwdriver if there is any reading.



# OPTIONS

The options listed in the following table of contents are those most commonly available. Special options not listed here will be covered by enclosed "addendum" sheets.

OPTION NUMBER	OPTION DESCRIPTION	PAGE
002	Parallel Charging.....	7-1
003	Series Charging.....	7-1
101	Remote Charge Control and Ammeter.....	7-2
500	Fused Disconnect Switch and 24V Control Circuit.....	7-2

## Parallel Charging – Option 002

This option provides cables allowing two batteries to be charged at the same time (batteries connected in parallel to charger).

To prevent premature charger turn on, this option requires the use of a battery connector with auxiliary contacts (Anderson "SBX" or equivalent). The same type connector must be specified on the battery and vehicle. The connector on the battery must have the auxiliary contacts jumpered together.

*NOTE: The safety interlock circuit is protected by an in-line 1 Amp AGC Fuse inside the battery charger.*

When charging two batteries, each must be of the same voltage (or number of cells). The total rated ampere-hour capacity of both batteries plus the Voltage (number of cells of only one of the batteries) must be within the range of the charger. Refer to charger nameplate for ratings. For example: two 12-volt (6 cell), 225 ampere-hour batteries would make a 12-volt (6 cell) 450 ampere-hour load.

Operate this charger as instructed in Operation chapter of this manual except that batteries are to be connected as shown in Figure 7-1, plus the total ampere-hour capacity must be used to calculate charging time.

**CAUTION: Make sure all connections are made positive to positive and negative to negative as shown.**

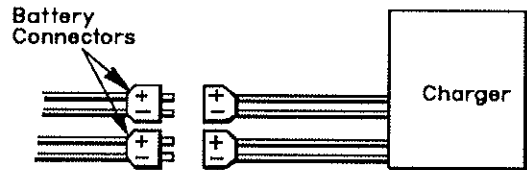


Figure 7-1 Parallel Charging Connections

## Series Charging – Option 003

This option provides a cable allowing two batteries to be charged at the same time (batteries connected in series to charger).

**CAUTION: With the batteries required to be connected in series, this charger cannot be used to charge one battery only.**

Both batteries must be of the same ampere-hour rating. The total rated voltage (or number of cells) of both batteries (add the two), plus the ampere-hour capacity of only one battery, must be within the charger nameplate range ratings. For example: two 12-volt (6-cell), 450 ampere-hour batteries would make a 24-volt (12-cell), 450 ampere-hour load.

For series charging, both batteries must be at identical depths of discharge (DOD); ie, they are used in series in the vehicle. A mismatch in DOD of the two batteries will result in severe overcharge of the lightly discharged battery and severe undercharge of a deeply, discharged battery.

Operate this charger as instructed in Operation chapter of this manual, except that charger must be connected to both batteries instead of just one. Refer to Figure 7-2.

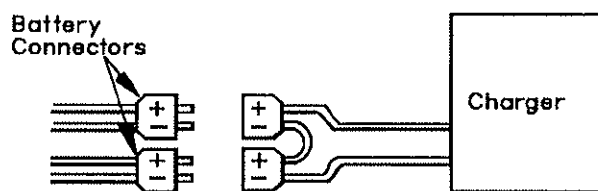


Figure 7-2 Series Charging Connections

**CAUTION:** Make sure all connections are made positive to positive and negative to negative as shown.

## Remote Charge Control – Option 101

This option provides a separate remote control box containing charger's Charge Control.

This remote control box must be connected to charger as instructed on label provided with remote charge control. Closely observe wire color coding.

Operate this charger as instructed in Operation chapter of this manual and as instructed under any applicable option descriptions.

## Fused Disconnect Switch – Option 500 (Refer to Figure 7-3)

This option is provided to meet certain "JIC" requirements. The switch must be in the open (OFF) position to disconnect all AC power into charger and to allow front door to be opened. With switch in open position, door can be opened by turning slotted latch screw to the left.

Disconnect switch is for *emergency or service use only*.

Charge cycle should continue until automatically shut off. If cycle must be interrupted, turn timer to "OFF" or push "STOP" button.

A control circuit operating on 24 volts is also provided to help assure operator safety.

Fused Disconnect Switch  
(Shown IN "On" Position)

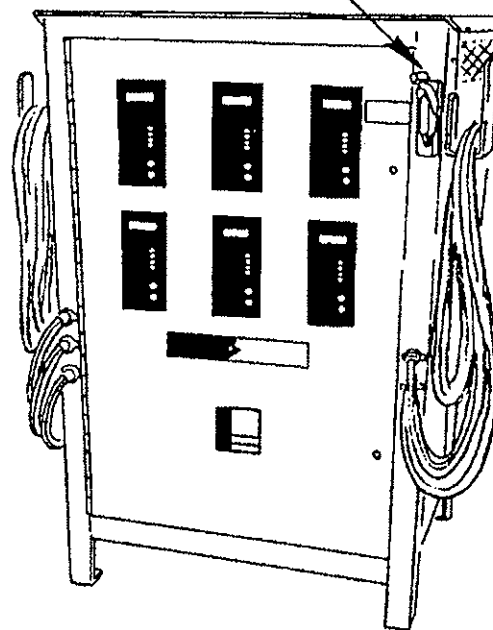


Figure 7-3 Fused Disconnect Switch



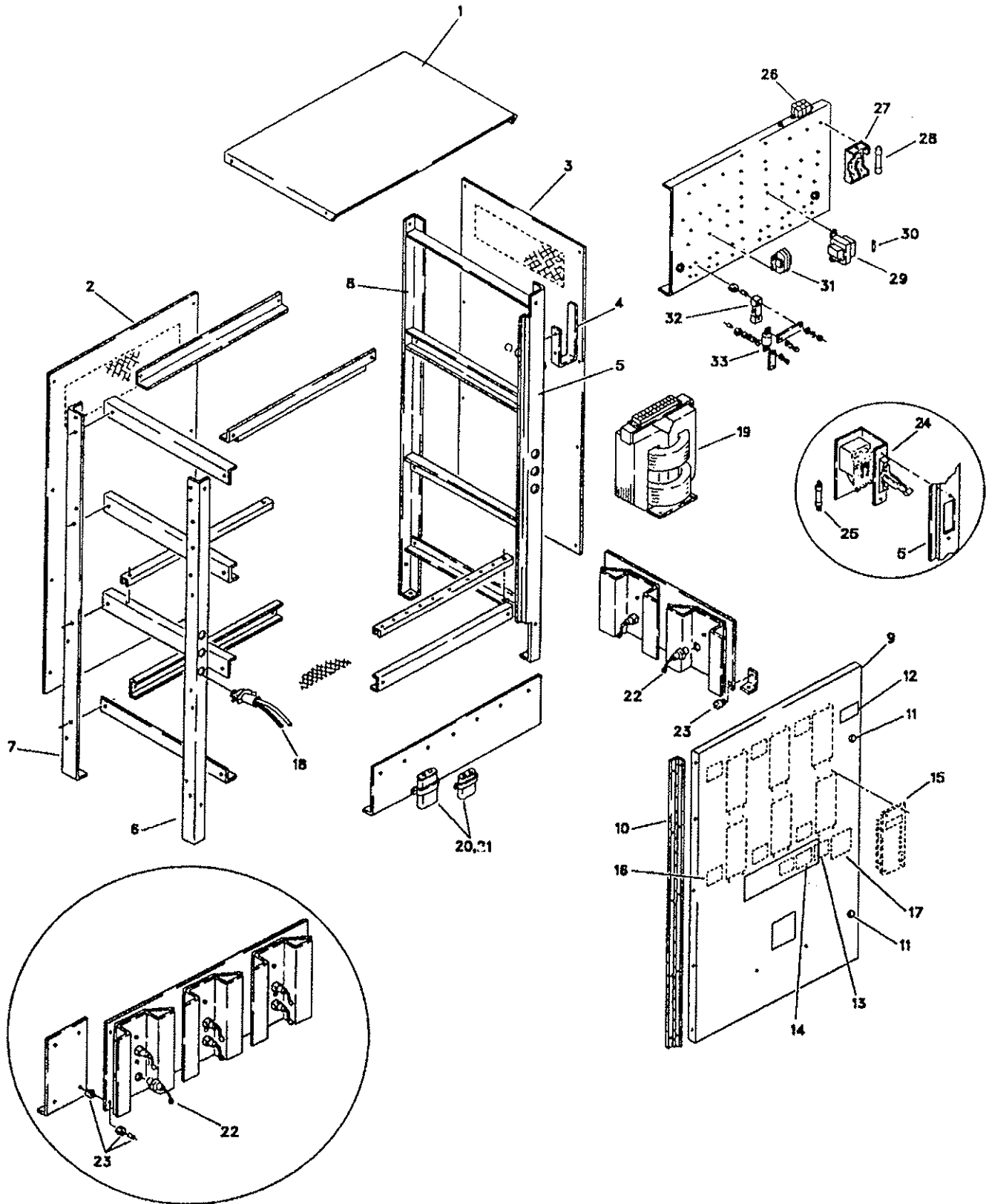


Figure 8-1

ITEM NO.	PART NO.	DESCRIPTION
1	SEE TABLE	TOP – CASE
2	SEE TABLE	PANEL – REAR
3	192038	PANEL – SIDE, LEFT & RIGHT
4	397752	HANGER – CABLE
5	SEE TABLE	CORNER – UPRIGHT, FRONT RIGHT
6	192053	CORNER – UPRIGHT, FRONT LEFT
7	192020-2	CORNER – UPRIGHT, REAR LEFT
8	192020-1	CORNER – UPRIGHT, REAR RIGHT
9	SEE TABLE	DOOR
10	192037	HINGE – DOOR
11	402425	LATCH – DOOR
12	404099	LABEL – DANGER
13	194335	LABEL – DANGER, VOLTAGE
14	406434	LABEL – WARNING INPUT
15	CONTACT FACTORY	PANEL – CONTROL (SEE # ON BACK OF CONTROL PANEL OR OPTION LABEL)
16	402717	LABEL – CHARGING
17	SEE TABLE	LABEL – AC INPUT
18	SEE TABLE	CABLE – OUTPUT
-	SEE TABLE	HARNESS – WIRE (CONTROL WIRING)
19	SEE TABLE	TRANSFORMER – POWER
20	SEE TABLE	CAPACITOR – TRANSFORMER
21	TRY-174-3	BRACKET – MOUNTING CAPACITOR
22	SEE TABLE	DIODE – SILICON
23	SEE TABLE	INSULATOR – MOUNTING RECTIFIER
24	SEE TABLE	SWITCH – DISCONNECT
25	SEE TABLE	FUSE – INPUT DISCONNECT SWITCH
26	SEE TABLE	BLOCK – TERMINAL (NOT USED W/DISCONNECT SWITCH)
27	SEE TABLE	BLOCK – FUSE, INPUT
28	SEE TABLE	FUSE – INPUT
29	SEE TABLE	TRANSFORMER – CONTROL
30	W-11166-1	FUSE – CONTROL TRANSFORMER (WHEN REQUIRED)
31	SEE TABLE	CONTACTOR – LINE
32	SEE TABLE	SHUNT – METER
33	SEE TABLE	FUSE – OUTPUT

- NOT ILLUSTRATED

430429-232  
PARTS LIST

TOP LEVEL NUMBER	MODEL NUMBER	INPUT FUSE (28)			OUTPUT FUSE (33)	METER SHUNT (32)	CONTACTOR (31)	INPUT FUSE BLOCK (27)	DIODE (22)
		208/240	480	575					
500117-200	725D3-12S4	W10386-9	W10386-9	N/A	Y-1890-5	193125-2	406240-1	406207-2	402832-3
500118-200	1200E3-18T2	W10386-11	W10386-9	N/A	Y1890-8	193125-3	406243-1	404605-5	402832-3
500119-200	1050E3-18T2	W10386-11	W10386-9	N/A	Y1890-7	193125-3	406243-1	404605-5	402832-3
500120-200	865E3-18T2	W10386-8	W10386-5	N/A	Y1890-6	193125-2	406243-1	404605-4	402832-3
500121-200	225D3-12S4	W10386-5	W10386-5	N/A	Y1890-1	193125-1	406240-1	406207-1	402832-3
500121-204	225D3-12S4	W10386-5	W10386-5	N/A	Y1890-1	193125-1	406240-1	406207-1	402832-3
500125-201	725D3-9S4	N/A	W10386-5	N/A	Y1890-5	193125-2	406240-1	406207-1	402832-3
500126-201	380D3-18S4	N/A	W10386-5	N/A	Y1890-3	193125-1	406240-1	406207-1	402832-3
500128-200	600E3-6S6	W10386-6	W10386-5	N/A	Y1890-4	193125-2	406240-1	406207-1	402832-3
500129-202	450D3-12S4	W10386-6	W10386-5	N/A	Y1890-4	193125-2	406240-1	406207-1	402832-3
500142-202	450E3-12S6	W10386-6	W10386-5	W10386-5	Y1890-4	193125-2	406240-1	406207-1	402832-3
500212-200	450D3-6S4	W10386-5	W10386-5	N/A	Y1890-4	193125-2	406240-1	406207-1	402832-3
500213-202	600D3-18S4	W10386-9	W10386-9	W10386-9	Y1890-4	193125-2	406240-1	406207-2	402832-3
500214-200	600D3-12S4	W10386-8	W10386-5	N/A	Y1890-4	193125-2	406240-1	406207-1	402832-3
500217-200	450D3-12S3	W10386-6	W10386-5	N/A	Y1890-4	193125-2	406240-1	406207-1	402832-3
500218-200	600D3-6S4	W10386-6	W10386-5	N/A	Y1890-4	193125-2	406240-1	406207-1	402832-3
500221-200	600E3-12S6	W10386-8	W10386-5	N/A	Y1890-4	193125-2	406240-1	406207-1	402832-3
500222-200	450D3-12S2	W10386-6	W10386-5	N/A	Y1890-4	193125-2	406240-1	406207-1	402832-3
500223-200	750E3-18T2	W10386-8	W10386-5	N/A	Y1890-5	193125-2	406243-1	404605-4	402832-3
500224-200	600E3-18S6	W10386-10	W10386-9	N/A	Y1890-4	193125-2	406241-1	406207-2	402832-3
500485-200	510D1-12S2	W10386-7	W-10386-5	N/A	Y1890-4	193125-2	406240-1	406207-1	402832-3

TABLE 8-1

TOP LEVEL NUMBER	MODEL NUMBER	TRANSFORMER (19)	CAPACITOR/ TRANSFORMER (20)	AC INPUT LABEL (17)	CONTROL TRANSFORMER (29)	OUTPUT CABLE (18)	REAR PANEL (2)	TOP CASE (1)
500117-200	725D3-12S4	396605A	TRY154-4 TRY154-6	406461	406247-2	396143-4	192038	192068
500118-200	1200E3-18T2	396653A	TRY154-1 TRY154-6	406461	406247-2	396143-5	192043	192036
500119-200	1050E3-18T2	396615A	TRY154-6	406461	406247-2	396143-5	192043	192036
500120-200	865E3-18T2	396828A	TRY154-6	406461	406247-2	396143-4	192043	192036
500121-200	225D3-12S4	396595A	TRY154-3	406461	406247-2	396143-1	192038	192068
500121-204	225D3-12S4	396595A	TRY154-1	406461	406247-1	396143-1	192038	192263
500125-201	725D3-9S4	396870	TRY154-2 TRY154-6	N/A	406247-2	396143-4	192038	192068
500126-201	380D3-18S4	396750	TRY154-1 TRY154-4	N/A	406247-2	396143-1	192038	192068
500128-200	600E3-6S6	396600A	TRY154-6	406461	406247-2	396143-2	192043	192036
500129-202	450D3-12S4	397557A	TRY154-6	406365	406247-4	396143-2	192038	192068
500142-202	450E3-12S6	397557A	TRY154-6	406365	406247-4	396143-2	192043	192036
500212-200	450D3-6S4	396593A	TRY154-3	406461	406247-2	396143-4	192038	192068
500213-202	600D3-18S4	397333A	TRY154-2 TRY154-6	406365	406247-4	396143-2	192038	192068
500214-200	600D3-12S4	396604A	TRY154-6	406461	406247-2	396143-2	192038	192068
500217-200	450D3-12S3	396603A	TRY154-6	406461	406247-2	396143-2	192038	192068
500218-200	600D3-6S4	396600A	TRY154-6	406461	406247-2	396143-2	192038	192068
500221-200	600E3-12S6	192390	TRY154-6	406461	406247-2	396143-2	192043	192036
500222-200	450D3-12S2	192412	TRY154-6	406461	406247-2	396143-2	192038	192068
500223-200	750E3-18T2	396613A	TRY154-6	406461	406247-2	396143-4	192043	192036
500224-200	600E3-18S6	192431	TRY154-4 TRY154-6	406461	406247-2	396143-2	192038	192068
500485-200	510D1-12S2	192552	TRY154-6	406461	406247-2	396143-2	192038	192068

TABLE 8-1 (Continued)

TOP LEVEL	MODEL	DOOR	CONTROL HARNESS	TERMINAL BLOCK	INSULATOR RECTIFIER MOUNTING (23)	DISC. SWITCH	DISC. SWITCH INPUT FUSE (25)			CORNER UPRIGHT FRONT
							208/240	480	575	
500117-200	725D3-12S4	192070	191915-3	400525-2	400732	N/A	N/A	N/A	N/A	192046
500118-200	1200E3-18T2	192073	191915-6	400525-2	400732	N/A	N/A	N/A	N/A	192046
500119-200	1050E3-18T2	192073	191915-6	400525-2	400732	N/A	N/A	N/A	N/A	192046
500120-200	865E3-18T2	192073	191915-6	400525-2	400732	N/A	N/A	N/A	N/A	192046
500121-200	225D3-12S4	192070	191915-3	400525-2	400732	N/A	N/A	N/A	N/A	192046
500121-204	225D3-12S4	192070	191915-3	N/A	400732	403956-1	W10386-8	W10386-5	N/A	191858
500125-201	725D3-9S4	192070	191915-3	N/A	400732	403956-1	N/A	W10386-8	N/A	191858
500126-201	380D3-18S4	192070	191915-3	N/A	400732	403956-1	N/A	W10386-8	N/A	191858
500128-200	600E3-6S6	192044	191915-1	400525-2	400732	N/A	N/A	N/A	N/A	192046
500129-202	450D3-12S4	192070	191915-3	400525-2	400732	N/A	N/A	N/A	N/A	192046
500142-202	450E3-12S6	192044	191915-1	400525-2	400732	N/A	N/A	N/A	N/A	192046
500212-200	450D3-6S4	192070	191915-3	400525-2	400732	N/A	N/A	N/A	N/A	192046
500213-202	600D3-18S4	192070	191915-3	400525-2	400732	N/A	N/A	N/A	N/A	192046
500214-200	600D3-12S4	192070	191915-3	400525-2	400732	N/A	N/A	N/A	N/A	192046
500217-200	450D3-12S4	192070	191915-4	400525-2	400732	N/A	N/A	N/A	N/A	192046
500218-200	600D3-6S4	192070	191915-3	400525-2	400732	N/A	N/A	N/A	N/A	192046
500221-200	600E3-12S6	192044	191915-1	400525-2	400732	N/A	N/A	N/A	N/A	192046
500222-200	450D3-12S2	192070	191915-5	400525-2	400732	N/A	N/A	N/A	N/A	192046
500223-200	750E3-18T2	192073	191915-6	400525-2	400732	N/A	N/A	N/A	N/A	192046
500224-200	600E3-18S6	192044	191915-1	400525-2	400732	N/A	N/A	N/A	N/A	192046
500485-200	510D1-12S2	192070	191915-5	400525-2	400732	N/A	N/A	N/A	N/A	191858

TABLE 8-1 (Continued)

# ELECTRONIC PRINTED CIRCUIT BOARD EXCHANGE SERVICE POLICY

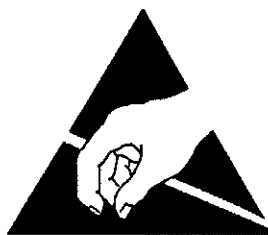
Because of the definite superiority of certain solid-state control components over conventional electromechanical relays and regulators, the company product lines now incorporate solid-state controls for applications in which they may be used to advantage. To facilitate testing and servicing, these control components and circuits have been assembled as modules on printed circuit boards, mounted in such a manner as to be quickly and easily removed. Electrical connections to other components of the unit are by means of plug-in, screw type, or "Faston" connectors.

In recognition of the fact that most users of this equipment lack the facilities and specially trained personnel necessary to service and repair electronic equipment, the company has established an electronic printed circuit board exchange service plan.

Under the Printed Circuit Board Exchange Plan, the owner of the equipment may exchange the printed circuit board (s) in which fault has developed for a replacement.

A standard exchange price has been established for each printed circuit board without regard to the amount of repair required to the original turned in, which is applied against the cost of the replacement. Exchange prices for a specific printed circuit board may be determined by contacting an authorized company distributor or by writing to the factory, giving the SPECIFICATION or ASSEMBLY, MODEL, and SERIAL numbers of the unit in which the printed circuit board is installed.

This Exchange Plan applies only to the specified solid-state control components circuitry which have failed due to electrical fault or normal deterioration resulting from use and age. The plan does not cover parts which have been physically damaged through accident or abuse, or to which unauthorized repairs have been made or attempted.

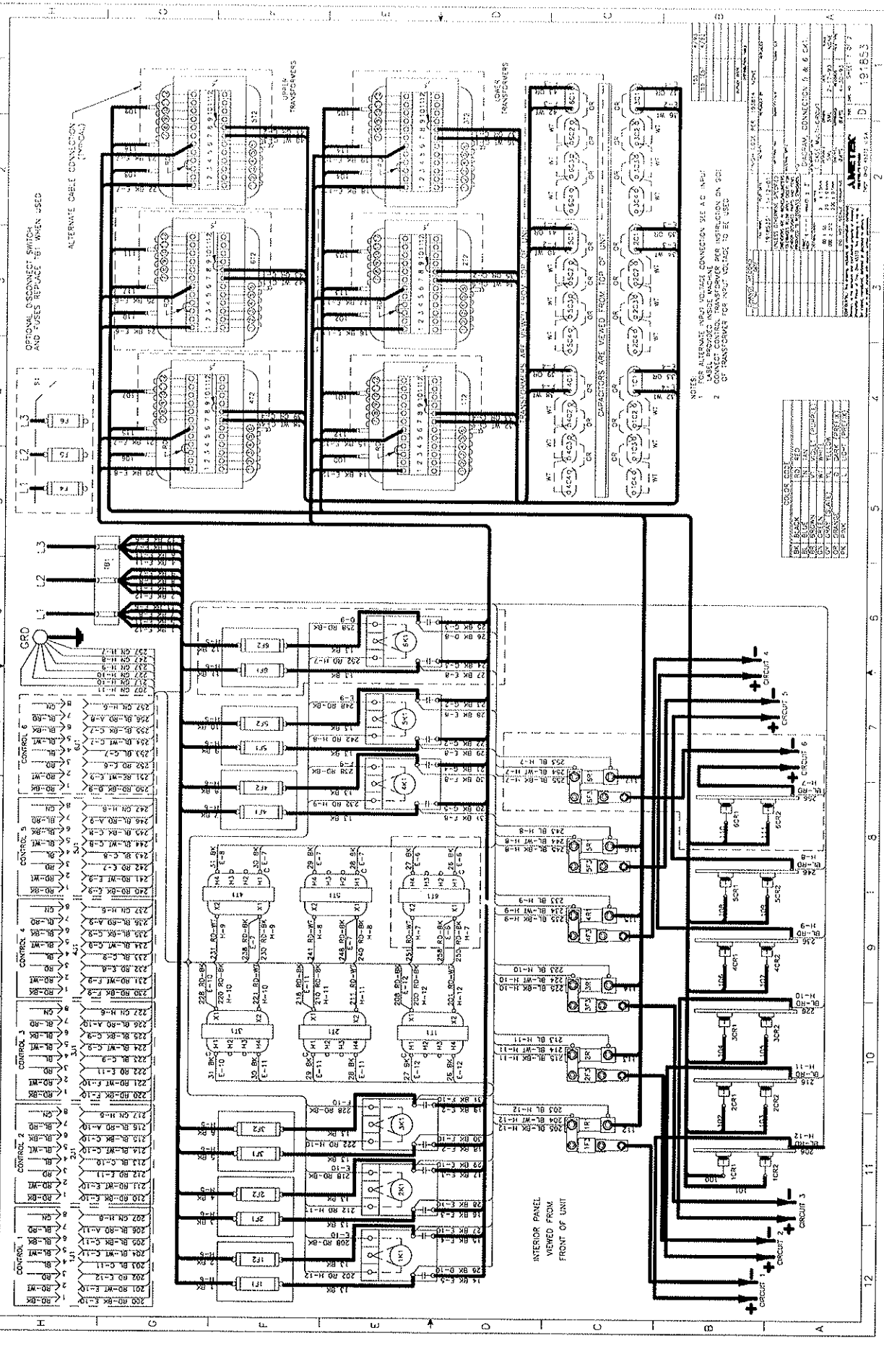


**CAUTION: Printed circuits and other devices may be affected by static electricity. Handling precautions required.**

---

# DIAGRAMS

SPECIFICATION NO.	DIAGRAM	DIMENSIONAL OUTLINE
500117-200	191854	191865
500118-200	191907	191865
500119-200	191907	191865
500120-200	191907	191865
500121-200	191854	191865
500121-204	191854	191865
500125-201	191854	191865
500126-201	191854	191865
500128-200	191853	191865
500129-202	191854	191865
500142-202	191853	191865
500212-200	191854	191865
500213-202	191854	191865
500214-200	191854	191865
500217-200	191854	191865
500218-200	191854	191865
500221-200	191853	191865
500222-200	191854	191865
500223-200	191907	191865
500224-200	191853	191865
500485-200	194596	191865



OPTIONAL DISCONNECT SWITCH AND FUSES REPLACE 'S' WHEN USED

ALTERNATE WIRE CONNECTION (TYPICAL)

TRANSFORMERS

TRANSFORMERS

NOTE: FOR ALTERNATE WIRE CONNECTION SEE AC PANEL LABEL PROVIDED INSIDE MACHINE FOR INSTRUCTION ON SIZE OF TRANSFORMER FOR WIRE GAUGE TO BE USED

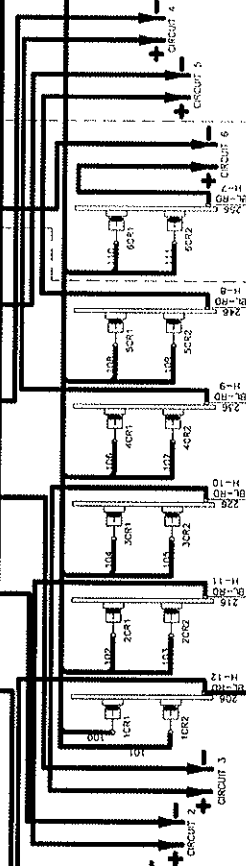
NO.	DESCRIPTION	QTY.	REMARKS
1	...	...	...
2	...	...	...
3	...	...	...
4	...	...	...
5	...	...	...
6	...	...	...
7	...	...	...
8	...	...	...
9	...	...	...
10	...	...	...
11	...	...	...
12	...	...	...
13	...	...	...
14	...	...	...
15	...	...	...
16	...	...	...
17	...	...	...
18	...	...	...
19	...	...	...
20	...	...	...
21	...	...	...
22	...	...	...
23	...	...	...
24	...	...	...
25	...	...	...
26	...	...	...
27	...	...	...
28	...	...	...
29	...	...	...
30	...	...	...
31	...	...	...
32	...	...	...
33	...	...	...
34	...	...	...
35	...	...	...
36	...	...	...
37	...	...	...
38	...	...	...
39	...	...	...
40	...	...	...
41	...	...	...
42	...	...	...
43	...	...	...
44	...	...	...
45	...	...	...
46	...	...	...
47	...	...	...
48	...	...	...
49	...	...	...
50	...	...	...
51	...	...	...
52	...	...	...
53	...	...	...
54	...	...	...
55	...	...	...
56	...	...	...
57	...	...	...
58	...	...	...
59	...	...	...
60	...	...	...
61	...	...	...
62	...	...	...
63	...	...	...
64	...	...	...
65	...	...	...
66	...	...	...
67	...	...	...
68	...	...	...
69	...	...	...
70	...	...	...
71	...	...	...
72	...	...	...
73	...	...	...
74	...	...	...
75	...	...	...
76	...	...	...
77	...	...	...
78	...	...	...
79	...	...	...
80	...	...	...
81	...	...	...
82	...	...	...
83	...	...	...
84	...	...	...
85	...	...	...
86	...	...	...
87	...	...	...
88	...	...	...
89	...	...	...
90	...	...	...
91	...	...	...
92	...	...	...
93	...	...	...
94	...	...	...
95	...	...	...
96	...	...	...
97	...	...	...
98	...	...	...
99	...	...	...
100	...	...	...

NO.	DESCRIPTION	QTY.	REMARKS
1	...	...	...
2	...	...	...
3	...	...	...
4	...	...	...
5	...	...	...
6	...	...	...
7	...	...	...
8	...	...	...
9	...	...	...
10	...	...	...
11	...	...	...
12	...	...	...
13	...	...	...
14	...	...	...
15	...	...	...
16	...	...	...
17	...	...	...
18	...	...	...
19	...	...	...
20	...	...	...
21	...	...	...
22	...	...	...
23	...	...	...
24	...	...	...
25	...	...	...
26	...	...	...
27	...	...	...
28	...	...	...
29	...	...	...
30	...	...	...
31	...	...	...
32	...	...	...
33	...	...	...
34	...	...	...
35	...	...	...
36	...	...	...
37	...	...	...
38	...	...	...
39	...	...	...
40	...	...	...
41	...	...	...
42	...	...	...
43	...	...	...
44	...	...	...
45	...	...	...
46	...	...	...
47	...	...	...
48	...	...	...
49	...	...	...
50	...	...	...
51	...	...	...
52	...	...	...
53	...	...	...
54	...	...	...
55	...	...	...
56	...	...	...
57	...	...	...
58	...	...	...
59	...	...	...
60	...	...	...
61	...	...	...
62	...	...	...
63	...	...	...
64	...	...	...
65	...	...	...
66	...	...	...
67	...	...	...
68	...	...	...
69	...	...	...
70	...	...	...
71	...	...	...
72	...	...	...
73	...	...	...
74	...	...	...
75	...	...	...
76	...	...	...
77	...	...	...
78	...	...	...
79	...	...	...
80	...	...	...
81	...	...	...
82	...	...	...
83	...	...	...
84	...	...	...
85	...	...	...
86	...	...	...
87	...	...	...
88	...	...	...
89	...	...	...
90	...	...	...
91	...	...	...
92	...	...	...
93	...	...	...
94	...	...	...
95	...	...	...
96	...	...	...
97	...	...	...
98	...	...	...
99	...	...	...
100	...	...	...

AMETEK  
 11000 W. 11th Ave., Denver, CO 80231  
 (303) 751-1000

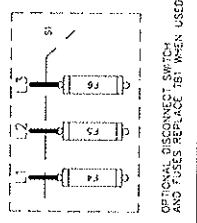
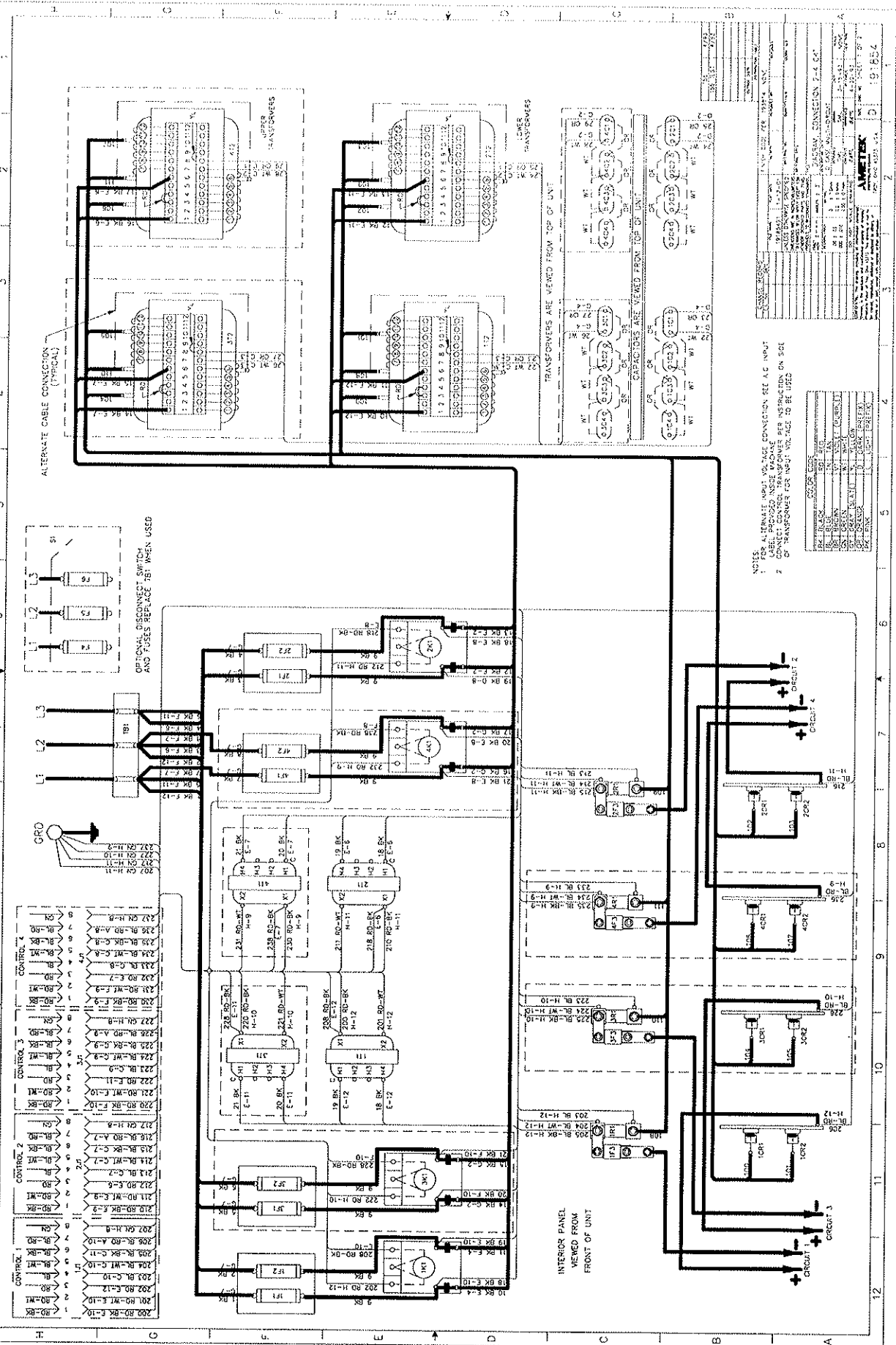
D 191853

INTERIOR PANEL VIEWED FROM FRONT OF UNIT







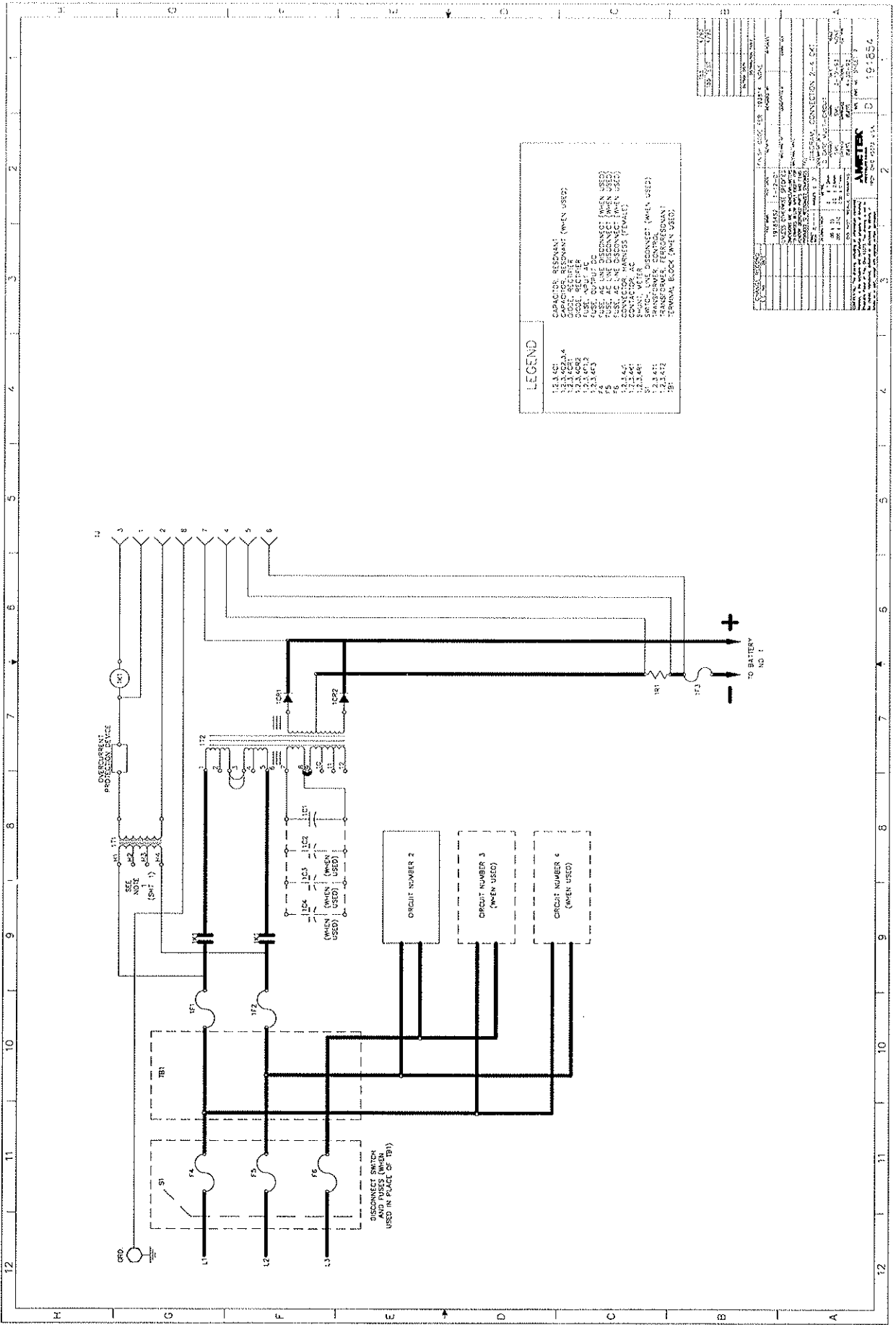


NOTES:  
 1. FOR ALTERNATE WIRE VOLTAGE CONNECTION SEE AC INPUT  
 2. CONNECT CONTROL TRANSFORMER PER INSTRUCTION ON SGI  
 3. TRANSFORMER FOR INPUT VOLTAGE TO BE USED

WIRE GAUGE	
18 AWG	0.040
20 AWG	0.032
22 AWG	0.025
24 AWG	0.020
26 AWG	0.016
28 AWG	0.012
30 AWG	0.009
32 AWG	0.007
34 AWG	0.005
36 AWG	0.004
38 AWG	0.003
40 AWG	0.002

WIRE GAUGE	
18 AWG	0.040
20 AWG	0.032
22 AWG	0.025
24 AWG	0.020
26 AWG	0.016
28 AWG	0.012
30 AWG	0.009
32 AWG	0.007
34 AWG	0.005
36 AWG	0.004
38 AWG	0.003
40 AWG	0.002

AMETEK  
 191854



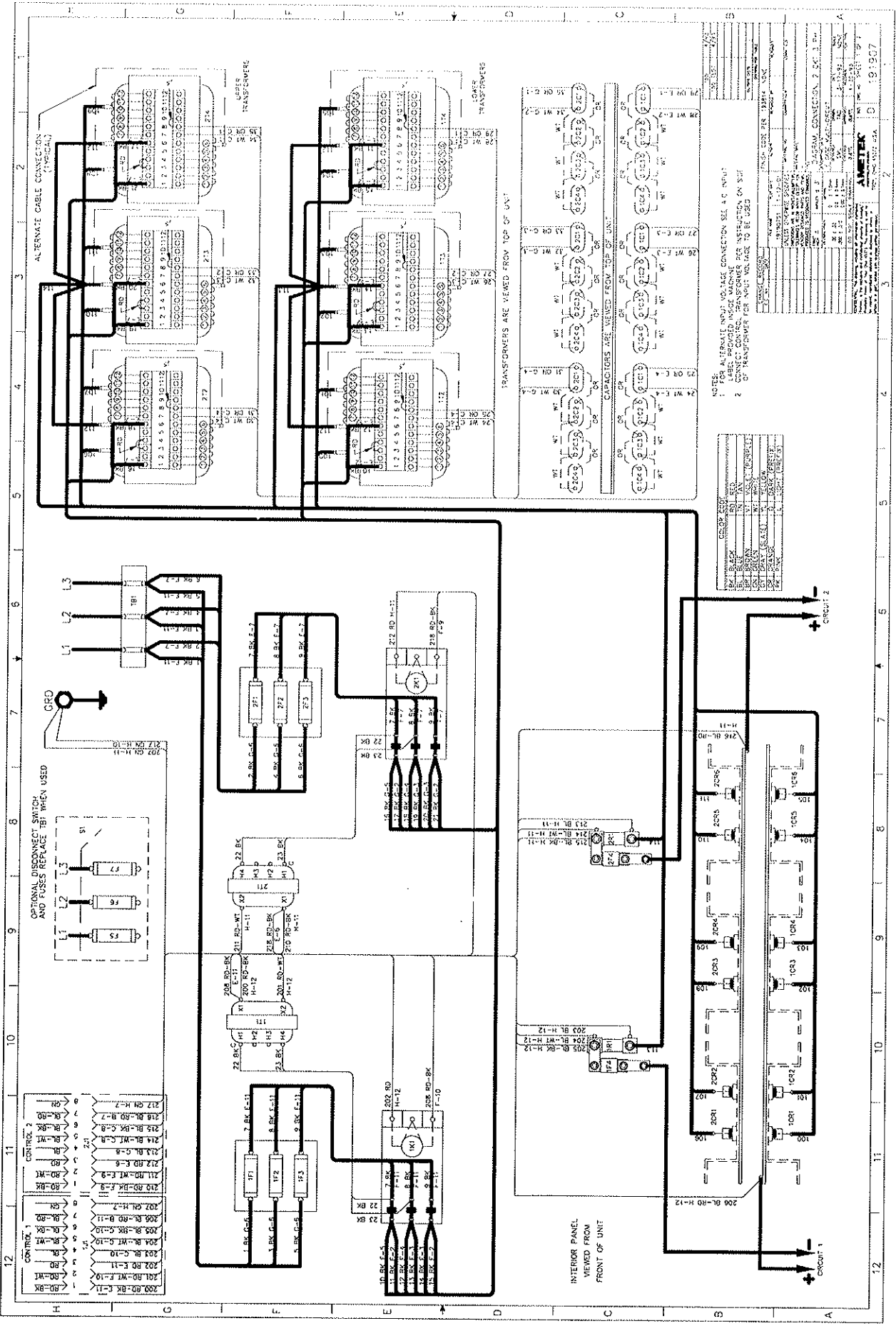
**LEGEND**

12.1.421 CAPACITOR RESONANT (WHEN USED)  
 12.1.422.4 CAPACITOR RESONANT (WHEN USED)  
 12.1.423.1 COIL RECTIFIER  
 12.1.423.2 FUSE 100V AC  
 12.1.423.3 FUSE 250V AC  
 12.1.423.4 FUSE 50V AC  
 12.1.423.5 FUSE 10V AC  
 12.1.423.6 FUSE 10V AC  
 12.1.423.7 FUSE 10V AC  
 12.1.423.8 FUSE 10V AC  
 12.1.423.9 FUSE 10V AC  
 12.1.424.1 CONTACTOR AC  
 12.1.424.2 CONTACTOR AC  
 12.1.424.3 CONTACTOR AC  
 12.1.424.4 CONTACTOR AC  
 12.1.424.5 CONTACTOR AC  
 12.1.424.6 CONTACTOR AC  
 12.1.424.7 CONTACTOR AC  
 12.1.424.8 CONTACTOR AC  
 12.1.424.9 CONTACTOR AC  
 12.1.425.1 SWITCH USE DISCONNECT (WHEN USED)  
 12.1.425.2 SWITCH USE DISCONNECT (WHEN USED)  
 12.1.425.3 SWITCH USE DISCONNECT (WHEN USED)  
 12.1.425.4 SWITCH USE DISCONNECT (WHEN USED)  
 12.1.425.5 SWITCH USE DISCONNECT (WHEN USED)  
 12.1.425.6 SWITCH USE DISCONNECT (WHEN USED)  
 12.1.425.7 SWITCH USE DISCONNECT (WHEN USED)  
 12.1.425.8 SWITCH USE DISCONNECT (WHEN USED)  
 12.1.425.9 SWITCH USE DISCONNECT (WHEN USED)

NO.	DESCRIPTION	QUANTITY	UNIT	REMARKS
1	TRANSFORMER	1	PCB	
2	DIODE RECTIFIER	1	PCB	
3	FUSE 100V AC	1	PCB	
4	FUSE 250V AC	1	PCB	
5	FUSE 50V AC	1	PCB	
6	FUSE 10V AC	1	PCB	
7	FUSE 10V AC	1	PCB	
8	FUSE 10V AC	1	PCB	
9	FUSE 10V AC	1	PCB	
10	FUSE 10V AC	1	PCB	
11	FUSE 10V AC	1	PCB	
12	FUSE 10V AC	1	PCB	
13	FUSE 10V AC	1	PCB	
14	FUSE 10V AC	1	PCB	
15	FUSE 10V AC	1	PCB	
16	FUSE 10V AC	1	PCB	
17	FUSE 10V AC	1	PCB	
18	FUSE 10V AC	1	PCB	
19	FUSE 10V AC	1	PCB	
20	FUSE 10V AC	1	PCB	
21	FUSE 10V AC	1	PCB	
22	FUSE 10V AC	1	PCB	
23	FUSE 10V AC	1	PCB	
24	FUSE 10V AC	1	PCB	
25	FUSE 10V AC	1	PCB	
26	FUSE 10V AC	1	PCB	
27	FUSE 10V AC	1	PCB	
28	FUSE 10V AC	1	PCB	
29	FUSE 10V AC	1	PCB	
30	FUSE 10V AC	1	PCB	
31	FUSE 10V AC	1	PCB	
32	FUSE 10V AC	1	PCB	
33	FUSE 10V AC	1	PCB	
34	FUSE 10V AC	1	PCB	
35	FUSE 10V AC	1	PCB	
36	FUSE 10V AC	1	PCB	
37	FUSE 10V AC	1	PCB	
38	FUSE 10V AC	1	PCB	
39	FUSE 10V AC	1	PCB	
40	FUSE 10V AC	1	PCB	
41	FUSE 10V AC	1	PCB	
42	FUSE 10V AC	1	PCB	
43	FUSE 10V AC	1	PCB	
44	FUSE 10V AC	1	PCB	
45	FUSE 10V AC	1	PCB	
46	FUSE 10V AC	1	PCB	
47	FUSE 10V AC	1	PCB	
48	FUSE 10V AC	1	PCB	
49	FUSE 10V AC	1	PCB	
50	FUSE 10V AC	1	PCB	
51	FUSE 10V AC	1	PCB	
52	FUSE 10V AC	1	PCB	
53	FUSE 10V AC	1	PCB	
54	FUSE 10V AC	1	PCB	
55	FUSE 10V AC	1	PCB	
56	FUSE 10V AC	1	PCB	
57	FUSE 10V AC	1	PCB	
58	FUSE 10V AC	1	PCB	
59	FUSE 10V AC	1	PCB	
60	FUSE 10V AC	1	PCB	
61	FUSE 10V AC	1	PCB	
62	FUSE 10V AC	1	PCB	
63	FUSE 10V AC	1	PCB	
64	FUSE 10V AC	1	PCB	
65	FUSE 10V AC	1	PCB	
66	FUSE 10V AC	1	PCB	
67	FUSE 10V AC	1	PCB	
68	FUSE 10V AC	1	PCB	
69	FUSE 10V AC	1	PCB	
70	FUSE 10V AC	1	PCB	
71	FUSE 10V AC	1	PCB	
72	FUSE 10V AC	1	PCB	
73	FUSE 10V AC	1	PCB	
74	FUSE 10V AC	1	PCB	
75	FUSE 10V AC	1	PCB	
76	FUSE 10V AC	1	PCB	
77	FUSE 10V AC	1	PCB	
78	FUSE 10V AC	1	PCB	
79	FUSE 10V AC	1	PCB	
80	FUSE 10V AC	1	PCB	
81	FUSE 10V AC	1	PCB	
82	FUSE 10V AC	1	PCB	
83	FUSE 10V AC	1	PCB	
84	FUSE 10V AC	1	PCB	
85	FUSE 10V AC	1	PCB	
86	FUSE 10V AC	1	PCB	
87	FUSE 10V AC	1	PCB	
88	FUSE 10V AC	1	PCB	
89	FUSE 10V AC	1	PCB	
90	FUSE 10V AC	1	PCB	
91	FUSE 10V AC	1	PCB	
92	FUSE 10V AC	1	PCB	
93	FUSE 10V AC	1	PCB	
94	FUSE 10V AC	1	PCB	
95	FUSE 10V AC	1	PCB	
96	FUSE 10V AC	1	PCB	
97	FUSE 10V AC	1	PCB	
98	FUSE 10V AC	1	PCB	
99	FUSE 10V AC	1	PCB	
100	FUSE 10V AC	1	PCB	

**AMETEK**

19-851  
 19-852  
 19-853  
 19-854  
 19-855  
 19-856  
 19-857  
 19-858  
 19-859  
 19-860  
 19-861  
 19-862  
 19-863  
 19-864  
 19-865  
 19-866  
 19-867  
 19-868  
 19-869  
 19-870  
 19-871  
 19-872  
 19-873  
 19-874  
 19-875  
 19-876  
 19-877  
 19-878  
 19-879  
 19-880  
 19-881  
 19-882  
 19-883  
 19-884  
 19-885  
 19-886  
 19-887  
 19-888  
 19-889  
 19-890  
 19-891  
 19-892  
 19-893  
 19-894  
 19-895  
 19-896  
 19-897  
 19-898  
 19-899  
 19-900



ALTERNATE CABLE CONNECTION (TYPICAL)

OPTIONAL DISCONNECT SWITCH AND FUSES REPLACE TBT WHEN USED

TRANSFORMERS ARE VIEWED FROM TOP OF UNIT

INTERIOR PANEL VIEWED FROM FRONT OF UNIT

- NOTES: ALTERNATE WPT. WPT. USE CONNECTION SEE 4-C UNIT
- 1 LABEL PROVIDED INSIDE MACHINE FOR INSTRUCTION ON SWT
  - 2 CONNECT CONTROL TRANSFORMER PER INSTRUCTION ON SWT
  - 3 CAPACITORS ARE VIEWED FROM TOP OF UNIT

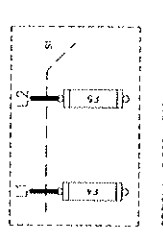
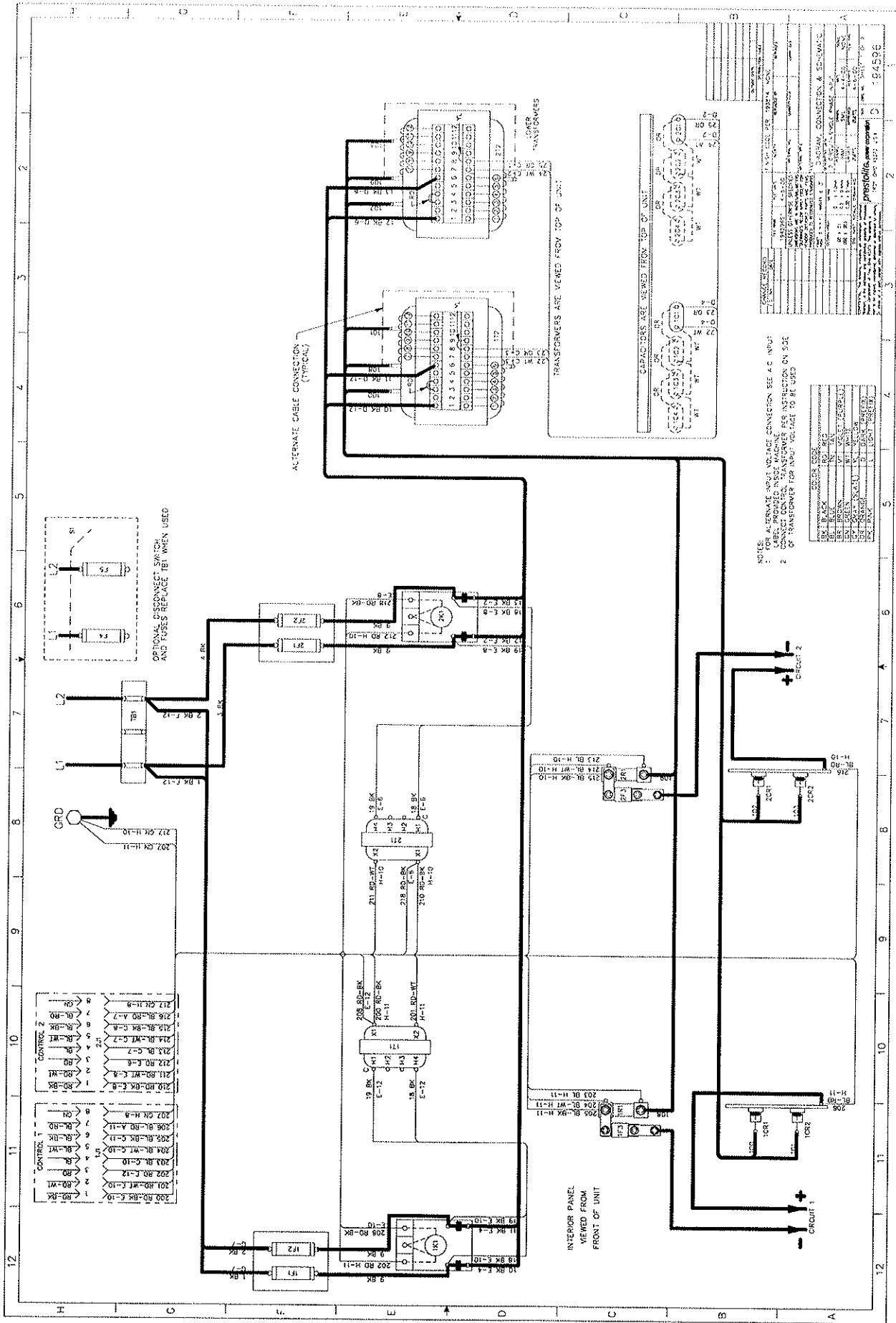
QTY	DESCRIPTION	REF. NO.
1	DISCONNECT SWITCH	SWT
1	FUSE 5A	F5
1	FUSE 7A	F7
1	FUSE 10A	F10
1	FUSE 15A	F15
1	FUSE 20A	F20
1	FUSE 25A	F25
1	FUSE 30A	F30
1	FUSE 35A	F35
1	FUSE 40A	F40
1	FUSE 45A	F45
1	FUSE 50A	F50
1	FUSE 55A	F55
1	FUSE 60A	F60
1	FUSE 65A	F65
1	FUSE 70A	F70
1	FUSE 75A	F75
1	FUSE 80A	F80
1	FUSE 85A	F85
1	FUSE 90A	F90
1	FUSE 95A	F95
1	FUSE 100A	F100

QTY	DESCRIPTION	REF. NO.
1	TRANSFORMER 250VA	T250
1	TRANSFORMER 500VA	T500
1	TRANSFORMER 750VA	T750
1	TRANSFORMER 1000VA	T1000
1	TRANSFORMER 1500VA	T1500
1	TRANSFORMER 2000VA	T2000
1	TRANSFORMER 2500VA	T2500
1	TRANSFORMER 3000VA	T3000
1	TRANSFORMER 3500VA	T3500
1	TRANSFORMER 4000VA	T4000
1	TRANSFORMER 4500VA	T4500
1	TRANSFORMER 5000VA	T5000
1	TRANSFORMER 5500VA	T5500
1	TRANSFORMER 6000VA	T6000
1	TRANSFORMER 6500VA	T6500
1	TRANSFORMER 7000VA	T7000
1	TRANSFORMER 7500VA	T7500
1	TRANSFORMER 8000VA	T8000
1	TRANSFORMER 8500VA	T8500
1	TRANSFORMER 9000VA	T9000
1	TRANSFORMER 9500VA	T9500
1	TRANSFORMER 10000VA	T10000

AMMETER

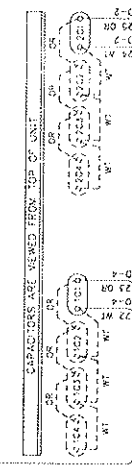
191907





ALTERNATE CABLE CONNECTION (TYPICAL)

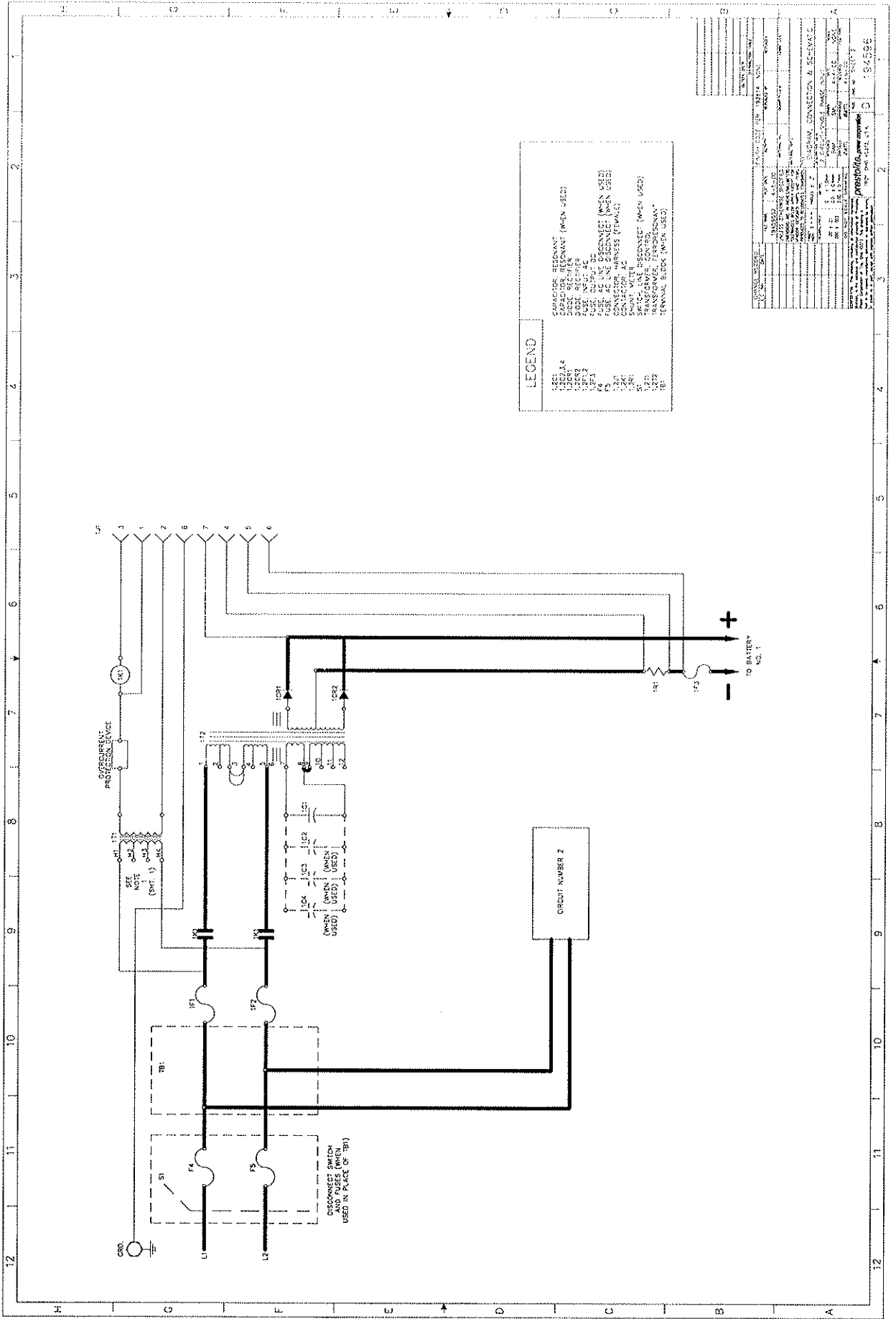
TRANSFORMERS ARE VIEWED FROM TOP OF UNIT

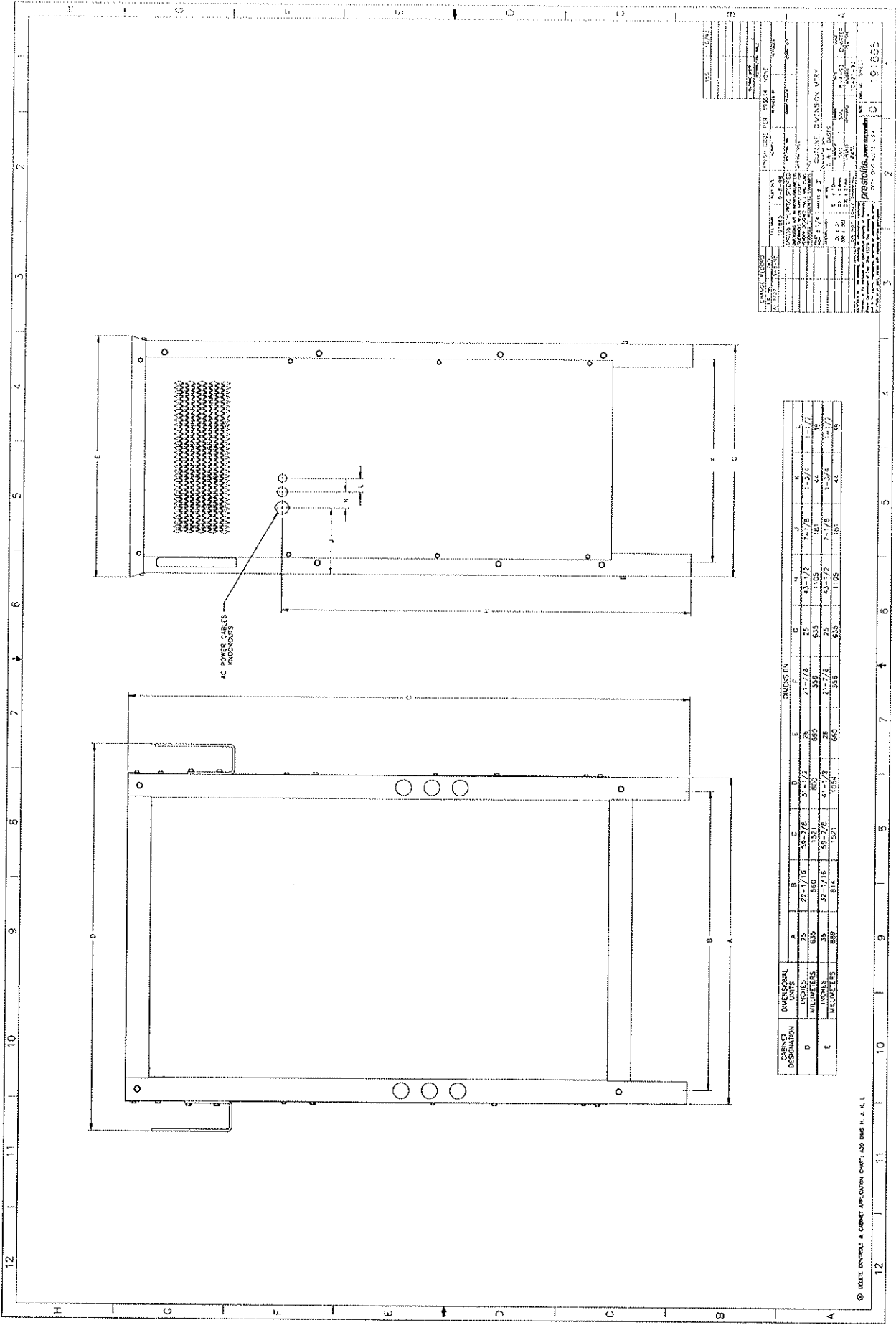


- NOTES:
1. TERMINAL BOARD CONNECTION SEE A.C. INPUT LABEL PROVIDED INSIDE TRANSFORMER PER INSTRUCTION ON SIDE OF TRANSFORMER FOR INPUT VOLTAGE TO BE USED
  2. CAPACITORS ARE VIEWED FROM TOP OF UNIT

COMPONENT	DESCRIPTION	QUANTITY	REVISION
1	TRANSFORMER T1	1	1
2	TRANSFORMER T2	1	1
3	DISCONNECT SWITCH DS	1	1
4	FUSE F1	1	1
5	FUSE F2	1	1
6	FUSE F3	1	1
7	FUSE F4	1	1
8	RELAY R1	1	1
9	RELAY R2	1	1
10	RELAY R3	1	1
11	RELAY R4	1	1
12	RELAY R5	1	1
13	RELAY R6	1	1
14	RELAY R7	1	1
15	RELAY R8	1	1
16	RELAY R9	1	1
17	RELAY R10	1	1
18	RELAY R11	1	1
19	RELAY R12	1	1
20	RELAY R13	1	1
21	RELAY R14	1	1
22	RELAY R15	1	1
23	RELAY R16	1	1
24	RELAY R17	1	1
25	RELAY R18	1	1
26	RELAY R19	1	1
27	RELAY R20	1	1
28	RELAY R21	1	1
29	RELAY R22	1	1
30	RELAY R23	1	1
31	RELAY R24	1	1
32	RELAY R25	1	1
33	RELAY R26	1	1
34	RELAY R27	1	1
35	RELAY R28	1	1
36	RELAY R29	1	1
37	RELAY R30	1	1
38	RELAY R31	1	1
39	RELAY R32	1	1
40	RELAY R33	1	1
41	RELAY R34	1	1
42	RELAY R35	1	1
43	RELAY R36	1	1
44	RELAY R37	1	1
45	RELAY R38	1	1
46	RELAY R39	1	1
47	RELAY R40	1	1
48	RELAY R41	1	1
49	RELAY R42	1	1
50	RELAY R43	1	1
51	RELAY R44	1	1
52	RELAY R45	1	1
53	RELAY R46	1	1
54	RELAY R47	1	1
55	RELAY R48	1	1
56	RELAY R49	1	1
57	RELAY R50	1	1
58	RELAY R51	1	1
59	RELAY R52	1	1
60	RELAY R53	1	1
61	RELAY R54	1	1
62	RELAY R55	1	1
63	RELAY R56	1	1
64	RELAY R57	1	1
65	RELAY R58	1	1
66	RELAY R59	1	1
67	RELAY R60	1	1
68	RELAY R61	1	1
69	RELAY R62	1	1
70	RELAY R63	1	1
71	RELAY R64	1	1
72	RELAY R65	1	1
73	RELAY R66	1	1
74	RELAY R67	1	1
75	RELAY R68	1	1
76	RELAY R69	1	1
77	RELAY R70	1	1
78	RELAY R71	1	1
79	RELAY R72	1	1
80	RELAY R73	1	1
81	RELAY R74	1	1
82	RELAY R75	1	1
83	RELAY R76	1	1
84	RELAY R77	1	1
85	RELAY R78	1	1
86	RELAY R79	1	1
87	RELAY R80	1	1
88	RELAY R81	1	1
89	RELAY R82	1	1
90	RELAY R83	1	1
91	RELAY R84	1	1
92	RELAY R85	1	1
93	RELAY R86	1	1
94	RELAY R87	1	1
95	RELAY R88	1	1
96	RELAY R89	1	1
97	RELAY R90	1	1
98	RELAY R91	1	1
99	RELAY R92	1	1
100	RELAY R93	1	1

194596





DIMENSIONAL DESIGNATION	DIMENSIONAL UNITS		DIMENSION	
	A	B	C	D
D	25	22-1/16	32-1/2	35
E	63.5	560	15.1	820
F	35	32-1/8	58-7/8	61-1/2
G	889	814	150.1	152.4
H	25	22-1/16	32-1/2	35
I	63.5	560	15.1	820
J	35	32-1/8	58-7/8	61-1/2
K	889	814	150.1	152.4

DATE	10/10/88
BY	...
CHECKED	...
APPROVED	...
TITLE	...
PROJECT	...
DRAWING NO.	...
REV.	...
SCALE	...
SHEET NO.	...
TOTAL SHEETS	...
DESIGNED BY	...
DRAWN BY	...
CHECKED BY	...
APPROVED BY	...
DATE	10/10/88

© 1988 GENERAL ELECTRIC COMPANY. ALL RIGHTS RESERVED.



# WARRANTY

## AMETEK/PRESTOLITE POWER INDUSTRIAL BATTERY CHARGERS

Ametek/Prestolite Power (hereinafter called "Prestolite") warrants that each new and unused Industrial Battery Charger manufactured and supplied by it is of good workmanship and is free from any inherent mechanical defects, provided that (1) the product is installed and operated in accordance with generally accepted industrial standards and in accordance with the printed instructions of Prestolite, (2) the product is used under normal conditions for which designed, (3) the product is not subjected to misuse, negligence or accident, and (4) the product receives proper care, protection and maintenance under supervision of competent personnel. This warranty is subject to the following provisions:

1. **PRODUCTS AND PARTS WARRANTED.** Subject to the exceptions listed below each Industrial Battery Charger is warranted for a period of one (1) year from the date of it's shipment by Prestolite, provided the charger is used in accordance with Prestolite's published performance rating for the unit involved. The exceptions to this warranty are as follows:
  - a) Power transformers and silicon diodes on unit (s) shipped after January 1, 1997 are warranted for ten (10) years after Prestolite's shipment of the unit(s) of which they are a part, provided however that during the last nine (9) years of this 10 year period the warranty covers parts replacement only – no labor or other services are provided by Prestolite, nor shall Prestolite be obligated to reimburse the owner or any other person for any work performed.
  - b) Primary switch contacts, fuses, bulbs, and filters are not warranted unless found to be defective prior to use.
2. **COMMENCEMENT OF WARRANTY TIME PERIODS.** The warranty periods indicated in the Warranty Schedule shall commence on the date of shipment by Prestolite.
3. **PERSONS COVERED BY WARRANTY.** This warranty is extended by Prestolite only to the purchaser of new equipment from Prestolite or one of its authorized distributors. The products purchased under this agreement shall be used exclusively by the buyer and its employees and by no other persons; and therefore there shall be no third party beneficiary to this warranty.
4. **LIMITATION OF REMEDY.** The existence of claimed defects in any product covered by this warranty is subject to Prestolite's factory inspection and judgement. Prestolite's liability is limited to repair of any defects found by Prestolite to exist or, at Prestolite's option, the replacement of the defective product. F.O.B. factory after the defective product has been returned by the purchaser at its expense to Prestolite's shipping place. Replacement and exchange parts will be warranted for the remainder of the original Industrial Battery Charger Warranty or for a period of ninety (90) days, whichever is greater. Prestolite and its authorized distributors or dealers shall not be liable for direct or indirect, special or consequential damages in excess of such repair or replacement. In no event shall the purchaser be entitled to recover for contingent expenses resulting from, but not limited to, telephone calls, telegrams, travel expenses, lodging, duties and taxes, labor, rental or replacement equipment, loss of business or profits or other commercial losses.
5. **USE OF DEFECTIVE PRODUCT.** Continued use of an Industrial Battery Charger after discovery of a defect VOIDS ALL WARRANTIES.
6. **ALTERED EQUIPMENT.** Except as authorized in writing, the warranty specified does not cover any equipment that has been altered by any party other than Prestolite.

EXCEPT AS STATED ABOVE, ALL OTHER WARRANTIES AND CONDITIONS, EITHER EXPRESSED OR IMPLIED, INCLUDING IMPLIED WARRANTIES OF MERCHANTABILITY AND FITNESS FOR A PARTICULAR PURPOSE, ARE EXCLUDED AND BUYER ASSUMES ALL RISK AND LIABILITY RESULTING FROM USE OF THE GOODS. AMETEK/PRESTOLITE POWER NEITHER ASSUMES NOR AUTHORIZES ANY PERSONS TO ASSUME FOR AMETEK/PRESTOLITE POWER ANY OTHER LIABILITY IN CONNECTION WITH THE SALE OR USE OF THE GOODS SOLD, AND THERE ARE NO ORAL AGREEMENTS OR WARRANTIES COLLATERAL TO OR AFFECTING THIS WRITTEN WARRANTY.

### WARNING

At all times, safety must be considered an important factor in the installation, servicing, and operation of the product, and skilled, qualified technical assistance should be utilized.

AMETEK/PRESTOLITE POWER  
TROY, OHIO USA

Data Sheet: 1140  
Index: 110100  
Replaces: 082499

**AMETEK®**  
PRESTOLITE POWER