

OWNER'S MANUAL 193111-032

Revised November 15, 2004

IMPORTANT: Read these instructions before installing, operating, or servicing this system.

BATTERY-MATE

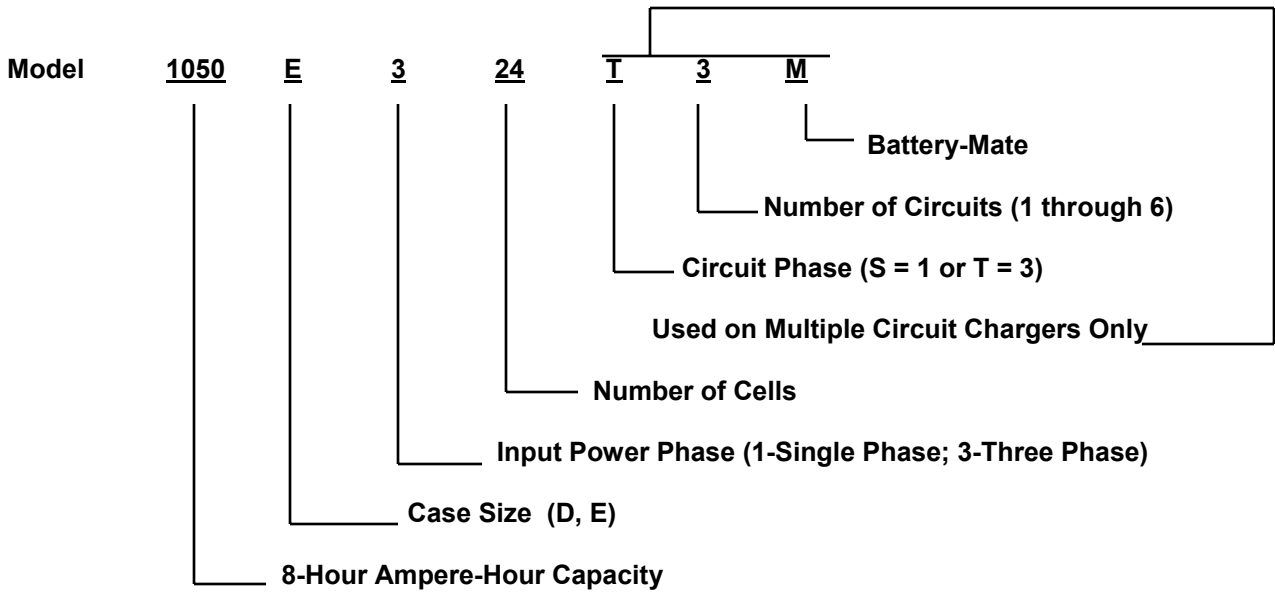
**Multiple Circuit
Silicon Diode Ferroresonant
Transformer type
Battery Charger**

DO NOT DESTROY

AMETEK/PRESTOLITE POWER , TROY, OHIO 45373-1099, U.S.A.

NOTE: Information regarding obtaining additional copies of this manual is located in the Introduction chapter of this manual.

A battery charger is identified by model number. Incorporated into the model number is the 8-hour ampere-hour capacity, case size, input power phase, and number of cells in battery for which charger is intended. The following example explains the basic model numbering arrangement.



NOTE: This information is required for ordering certain replacement/service parts.

INTRODUCTION	1
How to use this Manual	1-1
Equipment Identification	1-1
Receipt of Equipment	1-1
SAFETY INSTRUCTIONS AND WARNINGS	2
DESCRIPTION OF EQUIPMENT	3
Charger.....	3-1
Charge Control	3-1
INSTALLATION	4
Location	4-1
Environmental Characteristics	4-1
Grounding.....	4-1
Line Voltage Changeover Instructions.....	4-2
Line Connections to Battery Charger.....	4-2
Charging Cable Connectors	4-3
Pre-operation Checks	4-3
OPERATION	5
Preliminary.....	5-1
Normal or Daily Charge	5-1
Equalize or Weekend Charge.....	5-1
Manual Stop.....	5-2
Battery Discrimination.....	5-2
Refresh Charge	5-2
Backup Timer Shutdown.....	5-2
Battery Disconnect Shutdown.....	5-3
Low Current Shutdown	5-3
AC Power Fail.....	5-3
MAINTENANCE	6
Inspection and Cleaning	6-1
Lubrication	6-1
Charging Rate Adjustment.....	6-1
Fuse Replacement.....	6-2
Silicon Diode Testing.....	6-2
Capacitor Testing.....	6-3
Troubleshooting.....	6-4
OPTIONS	7
Remote Charge Control – Option 101	7-1
Fused Disconnect Switch – Option 500.....	7-1
PARTS LIST	8
DIAGRAMS	
WARRANTY	

This page intentionally left blank.

INTRODUCTION

How To Use This Manual

IMPORTANT: It is especially important that all charger internal components be kept clean and dry, and all electrical connections as tightened as instructed in the Maintenance chapter of this manual. Replace any precautionary or instruction label that cannot be easily read.

To ensure safe operation, read the entire manual, including the chapter on Safety Instructions and Warnings.

Throughout this manual, the words **WARNING**, **CAUTION**, and **NOTE** may appear. Pay particular attention to the information provided under these headings. These special annotations are easily recognized as follows:

WARNING gives information regarding possible personal injury. Warnings will be enclosed in a box such as this.

CAUTION refers to possible equipment

damage. Cautions will be shown in bold type.

NOTE offers helpful information concerning certain operating procedures. Notes will be shown in italics.

Equipment Identification

The unit's identification number (specification, model, serial number) usually appears on a nameplate attached to the front panel.

Receipt Of Equipment

When you receive the equipment, check it against the invoice to make sure it is complete and inspect the equipment for possible damage due to shipping. If there is any damage, notify the carrier immediately to file a claim. Furnish complete information concerning damage claims or shipping errors to the company shown on the cover of this manual. Include all equipment identification numbers and group part numbers (if any) as described above along with a full description of the parts in error.

Additional copies of this manual may be purchased by contacting the company shown on the cover of this manual. Include the Owner's Manual number and equipment identification numbers.

This page intentionally left blank.

SAFETY INSTRUCTIONS AND WARNINGS

FOR OPERATION OF BATTERY CHARGING EQUIPMENT

IMPORTANT – READ AND UNDERSTAND THESE INSTRUCTIONS. DO NOT LOSE THEM. ALSO READ OPERATING/INSTRUCTION MANUAL BEFORE INSTALLING, OPERATING, OR SERVICING THIS EQUIPMENT.

A. General

Battery charging products can cause serious injury or death, or damage to other equipment or property, if the operator does not strictly observe all safety rules and take precautionary actions.

Safe practices have developed from past experience in the use of charging equipment. These practices must be learned through study and training before using this equipment. Anyone not having extensive training in battery charging practices should be taught by experienced operators.

Only qualified personnel should install, use, or service this equipment.

B. Shock Prevention

Bare conductors, or terminals in the output circuit, or ungrounded, electrically-live equipment can fatally shock a person. To protect against shock, have competent electrician verify that the equipment is adequately grounded and learn what terminals and parts are electrically HOT.

The body's electrical resistance is decreased when wet, permitting dangerous current to flow through the body. Do not work in damp area without being extremely careful. Stand on dry rubber mat or dry wood and use insulating gloves when dampness or sweat cannot be avoided. Keep clothing dry.

1. Installation and Grounding of Electrically Powered

Equipment – Electrical equipment must be installed and maintained in accordance with the National Electrical Code, NFPA 70, and local codes. A power disconnect switch must be located at the equipment. Check nameplate for voltage and phase requirements. If only 3-phase power is available, connect *single-phase* equipment to only two wires of the 3-phase line. DO NOT CONNECT the equipment grounding conductor (lead) to the third live wire of the 3-phase line as this makes the equipment frame electrically HOT, which can cause a fatal shock.

If a grounding lead (conductor) is part of the power supply cable, be sure to connect it to a properly grounded switch box or building ground. If not part of the supply cable, use a separate grounding lead (conductor). Do not remove a ground prong from any plug. Use correct mating receptacles. Check ground for electrical continuity before using equipment.

The grounding conductor must be of a size equal to or larger than the size recommended by Code or in this manual.

2. Charging Leads – Inspect leads often for damage to the insulation. Replace or repair cracked or worn leads immediately. Use leads having sufficient capacity to carry the operating current without overheating.
3. Battery Terminals – Do not touch battery terminals while equipment is operating.
4. Service and Maintenance – Shut OFF all power at the disconnect switch or line breaker *before* inspecting, adjusting, or servicing the equipment. Lock switch OPEN (or remove line fuses) so that the power cannot be turned ON accidentally. Disconnect power to equipment if it is to be left unattended or out of service.

Disconnect battery from charger. Measure voltage on capacitors and discharge through an insulated screwdriver if there is any voltage reading.

Keep inside parts clean and dry. Dirt and/or moisture can cause insulation failure. This failure can result in high voltage at the charger output.

C. Burn and Bodily Injury Prevention

The battery produces very high currents when short circuited, and will burn the skin severely if in contact with any metal conductor that is carrying this current. Do not permit rings on fingers to come in contact with battery terminals or the cell connectors on top of the battery.

Battery acid is very corrosive. Always wear correct eye and body protection when near batteries.

D. Fire and Explosion Prevention

Batteries give off explosive flammable gases which easily ignite when coming in contact with an open flame or spark. Do not smoke, cause sparking, or use open flame near batteries. Charge batteries only in locations which are clean, dry, and well ventilated. Do not lay tools or anything that is metallic on top of any battery. All repairs to a battery must be made only by experienced and qualified personnel.

E. Arcing and Burning of Connector

To prevent arcing and burning of the connector contacts, be sure the charger is OFF before connecting or disconnecting the battery. (If the charger is equipped with an ammeter, the ammeter should not indicate current flow.) Always connect battery before turning charger ON.

F. Medical and First Aid Treatment

First aid facilities and a qualified first aid person should be available for each shift for immediate treatment of electrical shock victims.

EMERGENCY FIRST AID: Call physician and ambulance immediately. Use First Aid techniques recommended by the American Red Cross.

DANGER: ELECTRICAL SHOCK CAN BE FATAL. If person is unconscious and electric shock is suspected, do not touch person if he or she is in contact with charging leads, charging equipment, or other live electrical parts. Disconnect (open) power at wall switch and then use First Aid. Dry wood, wooden broom, and other insulating material can be used to move cables, if necessary, away from person. IF BREATHING IS DIFFICULT, give oxygen. IF NOT BREATHING, BEGIN ARTIFICIAL BREATHING, such as mouth-to-mouth. IF PULSE IS ABSENT, BEGIN ARTIFICIAL CIRCULATION, such as external heart massage.

IN CASE OF ACID IN THE EYES, flush very well with clean water and obtain professional medical attention immediately.

G. Equipment Warning Labels

Inspect all precautionary labels on the equipment. Order and replace all labels that cannot be easily read.

DESCRIPTION OF EQUIPMENT

Charger

The basic charging circuit is the silicon diode, rectifier-type with ferroresonant transformer (s). This ferroresonant transformer design regulates charging current by allowing the battery to determine its own charge cycle rate in accordance with its state of discharge. It provides a constantly-tapering charge that eliminates the possibility of overcharging, even with line voltage variations of $\pm 10\%$. Single-phase input chargers have one transformer, three-phase input chargers have two. The charger is internally protected from overload and short circuits.

When charging lead acid batteries, with the same number of cells and ampere-hour capacity as shown on charger nameplate, the charging time will be approximately 8 hours on 80% discharged batteries. Batteries of smaller or larger ampere-hour capacities can also be charged, but will require shorter or longer charging, respectively.

Charge Control

The AC500 Control is provided as the standard charger control. It utilizes either a voltage/time (VT) charge termination or a patented $pT/dV/dT$ charge termination technique which eliminates excessive gassing by returning approximately 107% of the amp-hours removed from the battery.

Features of the AC500 Control include manual equalize, manual stop, back-up timer protection, two charge termination methods, 80% voltage point selection, high and low battery voltage discrimination, and AC power fail recovery.

The AC500 Control is "matched" to the output voltage of the charger by means of a printed circuit board mounted DIP switch. It will operate on 6, 12, 18, 24, 36, and "optional" cell batteries. "Optional" is provided to accommodate batteries between 6 and 36 cells that are not listed above.

The status of a normal charge cycle is indicated by the four LEDs on the front panel. The "80% Charged" LED will light when the battery voltage reaches the 80% charged voltage. This voltage may be 2.37 volts/cell or 2.45 volts/cell nominal, depending on the status of DIP switch S1-7. The "Charge Complete" LED will light only if the battery has completed the charge cycle and is ready for use. The "Abnormal Shutdown" LED will light if the charger terminates a charge prematurely. See the Troubleshooting chapter of this manual to determine the cause of the fault. The "Equalize" LED will light solid when a equalize charge is requested by pressing the EQUALIZE push button. The "Equalize" LED will flash when the charger is equalizing the battery.

WARNING: Do not connect a battery to this charger if any LED is lit. Do not disconnect a battery from this charger while a charge is in progress. Otherwise, arcing and burning of connector parts or a battery explosion may result. Batteries produce explosive gases. Keep sparks, flame, and cigarettes away. Ventilate when charging in an enclosed area. Always shield eyes when working near batteries.

This page intentionally left blank.

INSTALLATION

Location

For best operating characteristics and longest unit life, take care in selecting an installation site. Avoid locations exposed to high humidity, dust, high ambient temperature, or corrosive fumes. Moisture can condense on electrical components, causing corrosion or shorting of circuits (especially when dirt is also present).

Adequate air circulation is needed at all times in order to assure proper operation. Provide a minimum of 6 inches of free air space at rear and sides of the unit. Make sure that ventilation openings are not obstructed.

Environmental Characteristics

Operating Characteristics	0°C to 40°C (32°F to 104°F)
Operating Altitude	To 2000 Meters (6562 Feet)
Operating Humidity	80% up to 31°C, decreasing to 50% at 40°C, non-condensing 80% up to 88°F decreasing to 50% at 104°F, non-condensing

Grounding

The frame of the power source must be grounded for personnel safety. Where grounding is mandatory under state or local codes, it is the responsibility of the user to comply with all applicable rules and regulations. Where no state or local codes exist, it is recommended that the National Electrical Code be followed.

In addition to the usual function of protecting personnel against the hazard of electrical shock due to fault in the equipment, grounding serves to discharge the static electrical charges which tend to build up on the surfaces of equipment. These static charges can cause painful shock to personnel, and can lead to the erroneous conclusion that an electrical fault exists in the equipment.

If a charger is to be connected to the AC power supply with a flexible jacketed cable, one having a separate grounding conductor should be used. When included in cable assembly, grounding conductor will be green, green with a yellow stripe, or bare. When connecting input power to charger (as instructed in Line Connection to Battery Charger section of this manual), connect grounding conductor to equipment grounding terminal (stud with a green nut and a cup washer and identified by symbol \perp), taking care to make a good electrical connection. Connect other end of grounding conductor to the system ground.

If, for any reason, an input cable which does not include a grounding conductor is used, the equipment must be grounded with separate conductor. Minimum size and color coding requirements must be in accordance with any applicable state or local code, or the National Electrical Code.

If metallic armored cable or conduit is used, the metal sheathing or conduit must be effectively grounded as required by state or local code, or the National Electrical Code.

If a system ground is not available, the charger frame must be connected to a driven ground rod (at least 8 ft [2438 mm] long), or to a water pipe that enters the ground not more than 10 ft (3048 mm) from the charger. A grounding conductor must be connected to the rod or pipe in a manner that will assure a permanent and effective ground. The conductor must be sized in accordance with any applicable state or local code, or by the National Electrical Code. If in doubt, use the same size conductor as is used for the conductors supplying power to the charger.

**WARNING: ELECTRIC SHOCK
 HAZARD – Under no circumstance
 should you use a grounding
 conductor with a current carrying
 capacity less than the ampere
 rating shown in Table 4-1.**

LINE AMPS	DISCONNECT SWITCH *	BRANCH FUSE SIZE (AMPERES)	COPPER CABLE SIZE AWG **	
			POWER	GROUND
0-2.5	30A	5	No. 14	No. 14
2.6-4.5	30A	7	No. 14	No. 14
4.6-7.5	30A	10	No. 14	No. 14
7.6-12	30A	15	No. 14	No. 14
12.1-16	30A	20	No. 12	No. 12
16.1-18	30A	25	No. 10	No. 10
18.1-22	30A	30	No. 10	No. 10
22.1-24.5	60A	35	No. 8	No. 10
24.6-32.5	60A	40	No. 8	No. 10
32.6-40	60A	50	No. 8	No. 10
40.1-45	60A	60	No. 6	No. 10
45.1-57.5	100A	80	No. 4	No. 8
57.6-78	100A	100	No. 2	No. 8
78.1-102.5	200A	125	No. 2	No. 6
102.6-135	200A	150	No. 1/0	No. 6

Table 4-1 Recommended AC Input and Branch Fusing

The above table (Table 4-1) is based on 75°C (167°F) rated conductors and 40°C (104°F) ambient temperatures. Refer to National Electrical Code (1996) Tables 310-16 corrected to 40°C (104°F).

* For 115, 208, and 230-volt lines, use 250-volt disconnect switch.
 For 440-480, 575-volt lines, use 600-volt disconnect switch.

** Two conductors and ground conductor required for single phase.
 Three conductors and ground conductor required for three phase.

Recommended minimum size of grounding conductors (based on National Electrical Code 1996 – Table 250-95).

Line Voltage Changeover Instructions

1. Determine if the charger is connected for available line voltage. A label located near AC input terminals is marked with the AC voltage for which the charger is factory connected.
2. If charger is not connected correctly, check serial nameplate to determine that charger is equipped to be connected for available line voltage. If charger is suitably equipped, make voltage change-over connections by following instructions on AC INPUT label inside charger.
3. If charger is reconnected, check input fuse (s) ratings with ratings specified on label and replace if necessary.

CAUTION: INCORRECT CONNECTIONS AND INCORRECT FUSE SIZE can damage this equipment. Follow voltage changeover instructions carefully.

Line Connections to Battery Charger

Follow local code requirements if different than instructions in this manual.

1. Turn charger OFF.
2. Be sure charger is connected correctly for available line voltage as instructed above.
3. On charger nameplate, note the AC input amperes corresponding to the line voltage to which charger is to be connected. Use that ampere value to select the proper disconnect switch, fuse, and power cable sizes from Table 4-1. A “WARNING” label inside charger also lists fuse sizes for each line voltage (circled fuse rating is required for internal line voltage connections made at factory).

4. Route AC power input cable in through knock-out provided in side panel of charger cabinet. Securely fasten cable wires to a power input terminal inside charger. Refer to Grounding section of this manual for proper connection of grounding conductor. (Charger cabinet top or side panel, or both, may have to be removed to provide access to terminal block.)
5. With disconnect switch (on AC input power line) in "OPEN" or "OFF" position, connect power cable coming from charger, to the switch. Install fuses in switch.

Charging Cable Connectors

If connectors are already attached to charging cables, make sure that they're attached so that positive charger polarity will connect to positive battery terminal.

If connectors must be attached to charging cables, follow instructions supplied with connectors.

CAUTION: Make sure connectors are securely attached to cables (good solder joint or well tightened set screws, whichever is applicable). Be certain that positive charger cable will connect to positive battery terminal. If necessary, trace cables into charger and use supplied connection diagram to determine polarity. The use of a DC voltmeter may show polarity. Improper connections will "blow" output fuse and may cause other damage.

Note: If this charger is equipped with certain optional features, the connector attaching procedure may be modified. Refer to OPTIONS chapter of this manual for details.

Pre-operation Checks

1. Inspect charger thoroughly for damage; loose screws, nuts, or electrical connections.

WARNING: ELECTRICAL SHOCK HAZARD – Before inspecting or cleaning inside cabinet, turn OFF and remove fuses of disconnect switch (supplying AC power to charger), disconnect battery, and check for voltage on capacitors. Discharge through insulated screwdriver if there is any reading.

2. Remove all special tags that are tied to charger. Keep tags with this manual for future reference. Leave all precautionary and instruction labels in place on charger. Carefully read and follow instructions on all tags and labels. Make sure all labels remain visible to anyone operating charger.
3. Make sure all charger cabinet panels are fastened in place, to assure proper flow of ventilating air through cabinet.

This page intentionally left blank.

OPERATION

Preliminary

1. Make sure that charger is installed and grounded as instructed in this manual.
2. Make sure the charge control is set to the proper cell size via the charge control DIP switch cell selector.
3. Turn on main fused disconnect switch that supplies AC power to charger.
4. Maintain electrolyte level in batteries to be charged, as instructed by battery manufacturer. The volume of electrolyte will expand during the charge. Therefore, to avoid overfilling, do not add water until the battery has received at least an 80% charge. This will usually be reached at the time gassing starts.

Normal or Daily Charge

WARNING: DO NOT connect a battery to this charger if any LED is lit. Do not disconnect a battery from this charger while a charge is in progress; otherwise, arcing and burning of connector parts or a battery explosion may result. Batteries produce explosive gases. Keep sparks, flame and cigarettes away. Ventilate when charging in an enclosed area. Always shield eyes when working near batteries.

1. Insure that battery size matches the charger. (Number of cells and ampere-hour capacity are within charger nameplate rating.)
2. Securely engage the battery and charger connectors.
3. After a 5 second delay (all LED's will be lit), the charger will turn on. The "Charge in Progress" LED will indicate charging current.
4. The "80% Charged" LED will light when the battery on charge reaches the 80% charged voltage.

5. The charger will automatically turn off and the "Charge Complete" LED will light when the charge has finished. The light will remain on until the battery is disconnected from the charger.

NOTE: To disconnect battery from charger before charge is complete, first press the STOP key, then disconnect the battery from the charger.

Equalize or Weekend Charge

The AC500 features Auto Equalize on every 5th cycle. Closing S1-9 disables the auto equalize feature; and an equalize charge request can be performed by pressing the "Equalize" push-button on the control front panel. When Auto Equalize is enabled (S1-9 is open), then the "Equalize" push-button cannot be used to request an equalize charge. The AC500 is shipped with auto equalize feature enabled. With auto equalize disabled, an equalize charge can be selected or de-selected for any charge cycle using the sequence below.

1. Insure that battery size matches the charger. (Number of cells and ampere-hour capacity are within charger nameplate rating.)
2. Securely engage the battery and charger connectors.
3. After a 5 second delay (all LED's will be lit), the charger will turn on. The "Charge in Progress" LED will indicate charging current.
4. Press the "Equalize" key. The "Equalize" LED will light solid. Press the key again to cancel the equalize charge.

NOTE: The equalize charge cannot be cancelled once the battery reaches the equalize charging period. Press the STOP key to terminate the charge.

5. The "80% Charged" LED will light when the battery on charge reaches the 80% charged voltage.
6. The battery reaches the normal termination point (pT/dV/dT or VT). However, the battery is charged another 3 hours. The "Equalize" LED will flash during this equalize period.
7. The charger will automatically turn off, and the "Charge Complete" and the "Equalize" LED will light when the equalized charge has finished. The LED's will remain on until the battery is disconnected from the charger.

WARNING: DO NOT connect a battery to this charger if any LED is lit. Do not disconnect a battery from this charger while a charge is in progress; otherwise, arcing and burning of connector parts or a battery explosion may result. Batteries produce explosive gases. Keep sparks, flame and cigarettes away. Ventilate when charging in an enclosed area. Always shield eyes when working near batteries.

Manual Stop

1. To turn the charger off during any part of a charge cycle, press the STOP key. All four LEDs will flash.
2. To restart the charger, disconnect and reconnect the battery. A new charge cycle will begin.

Battery Discrimination

The AC500 Control has the ability to reject batteries with cell sizes that do not match the cell size that the control is set up for (via DIP switch S1-1 through S1-6). If the battery connected to the charger has an average terminal voltage of greater than 2.30 volts/cell, the charger will not start and all 4 LEDs will flash, then the "Charge in Progress" LED will flash (high battery fault indication). If the battery voltage eventually falls below 2.30 volts/cell, the control will begin a normal charge sequence.

If the battery connected to the charger has an average terminal voltage of less than 1.75 volts/cell, the charger will not start and all 4 LEDs will flash, then the "80% Charged" LED will flash (low battery fault indication). If the battery voltage eventually rises above 1.75 volts/cell, the control will start a normal charge sequence. If the battery connected to the charger has a terminal voltage of less than 1.75 volts/cell and the operator wishes to start the charge regardless of this low battery voltage, the charge cycle will start if both the EQUALIZE and the STOP keys are held pushed in until all LEDs go out (approximately 5 seconds). Release the key at this time.

Refresh Charge

In order to guarantee that a fully charged battery is always ready for use, a "Refresh" feature has been incorporated into the AC500 Control. If a battery is left connected to the charger for 72 hours after a "Charge Complete" has been reached, the AC500 will start a charge sequence. The running time of this "Refresh" charge will depend on the depth of self-discharge of the battery.

Backup Timer Shutdown

A backup timer will shut down the charger and all 4 LEDs will flash then the "Charge Complete" LED will flash if the battery on charge does not reach the 80% voltage during the first 10 hours of charging.

Likewise, if the AC500 Control is set to terminate via the pT/dV/dT methodology (DIP switch S1-8 off) and the charger does not reach the termination point within 5 hours after reaching the 80% charged voltage, all 4 LEDs will flash then the "Charge Complete" LED will flash.

WARNING: DO NOT connect a battery to this charger if any LED is lit. Do not disconnect a battery from this charger while a charge is in progress. Otherwise, arcing and burning of connector parts or a battery explosion may result. Batteries produce explosive gases. Keep sparks, flame, and cigarettes away. Ventilate when charging in an enclosed area. Always shield eyes when working near batteries.

Battery Disconnect Shutdown

If the battery is disconnected from the charger during a charge cycle, the charger will be shutdown. All LEDs will be off.

Low Current Shutdown

If the charger output current falls below a predetermined level, a low current shutdown will occur. All 4 LEDs will flash, then the "Equalize" LED will flash.

AC Power Fail

During an AC power failure, the AC500 Control stores key information about the charge cycle. The information is retained by powering some of the control's key components with a battery derived power supply. This causes the control to resume the charge where it left off when the AC power is returned, unaffected timers and equalize requests.

This page intentionally left blank.

MAINTENANCE

WARNING: ELECTRICAL SHOCK HAZARD — Before inspecting or cleaning inside cabinet, turn OFF and remove fuses of disconnect switch (supplying AC power to charger), disconnect battery, and check for voltage on capacitors. Discharge through insulated screwdriver if there is any reading.

Inspection And Cleaning

For uninterrupted, satisfactory service from this charger, it's necessary to keep unit clean, dry, and well ventilated. At least every three months, or more often as necessary, wipe and blow out all dirt from unit's interior components, with clean, dry air of not over 25 psi (172 kPa) pressure. Use a hand bellows if compressed air isn't available.

Check and tighten all electrical connections as necessary to eliminate unnecessary losses and to avoid subsequent trouble from overheating or open circuits. Check for broken wiring or damaged insulation on wiring.

WARNING: ELECTRICAL SHOCK HAZARD — Failure to keep internal parts clean and dry may allow transformer (s) to short out, causing secondary circuits to carry dangerously high voltage.

Be sure to replace all charger cabinet panels after any servicing, to assure proper flow of cooling air through unit and to protect internal components.

WARNING: ELECTRICAL SHOCK HAZARD — All cabinet panels must be replaced to protect personnel from contact with hazardous voltages.

Lubrication

None required.

Charging Rate Adjustment

Although it is normally not required, the charging rate can be adjusted to accommodate unusually high or low AC power line voltages, unusually high or low ambient temperatures, or aged battery.

A rate adjustment is necessary if battery consumes more water than normal or if its specific gravity after a normal (daily) charge is not within 10 points of its gravity after a weekend (equalizing) charge.

CAUTION: Before adjusting charging rate, make sure that bad connections or damage to charger isn't affecting charging process. Also make sure proper charging procedure has been followed (thoroughly read Operation chapter of this manual).

WARNING: ELECTRICAL SHOCK HAZARD — Before adjusting charging rate, turn OFF and remove fuses of disconnect switch (supplying AC power to charger), disconnect battery, and check for voltage on capacitors. Discharge through insulated screwdriver if there is any reading.

	Yellow Jumper	Orange Lead	Charger Output
	8 to 9	to 12	Maximum Output
	8 to 10	to 12	↑ Higher Output
	8 to 9	to 11	Lower Output ↓
	8 to 10	to 11	Minimum Output
	8 to 9	to 10	
	8 to 9	to 8	
	8 to 10	to 9	
	8 to 11	to 10	
	8 to 11	to 9	
8 to 12	to 10		
8 to 12	to 9		

CONNECTION FOR MINIMUM OUTPUT SHOWN

Table 6-1 Charging Rate Adjustment Table

1. Locate charging rate adjustment label inside charger cabinet (same as Table 6-1). The factory set charging rate is indicated on this label by circles around terminal numbers to which YELLOW jumper and ORANGE lead were connected.
2. Locate YELLOW jumper and ORANGE lead on each transformer terminal block present in your unit (one transformer for single-phase, two for three-phase).
3. Mark present location of YELLOW jumper and ORANGE lead on charger rate adjustment label and on Table 6-1 if different from that marked by factory.
4. Reconnect YELLOW jumper and ORANGE lead to the terminals giving the desired change of charging rate, as shown in Table 6-1.

CAUTION: Do not change connections more than one step before observing effect on charging rate. On fully charged battery (approx. 1.270 to 1.290 specific gravity), rate should not exceed 26% of "MAX AMPS" on charger nameplate. On fully discharged battery (approx. 1.140 specific gravity), rate should not exceed 110% of "MAX AMPS".

On three-phase chargers, both transformer terminal blocks must be identically connected.

Fuse Replacement

The silicon diodes in this charger are protected by a "fast-clearing" type fuse.

CAUTION: The use of any other type fuse besides the "fast-clearing" type may cause damage to silicon diodes.

Silicon Diode Testing

WARNING: ELECTRICAL SHOCK HAZARD — Before checking electrical components, turn OFF and remove fuses of disconnect switch (supplying AC power to charger), disconnect battery, and check for voltage on capacitors. Discharge through insulated screwdriver if there is any reading.

1. Disconnect one diode lead to isolate diode from electrical circuitry.
2. Use a good quality ohmmeter (preferably one having a mid-scale value of approximately 50 ohms) to measure resistance values.
3. Zero ohmmeter on R x 1 scale.
4. Record indicated resistance while placing either ohmmeter lead on threaded end of diode and other ohmmeter lead on diode lead.

5. Reverse ohmmeter leads on diode and record indicated resistance.
6. Consider diode good if one resistance reading is infinitely (or very) high and the other is extremely low.

NOTE: An acceptable low resistance value or range of values can't be given because of different readings from different ohmmeters, and differences in diodes of the same rating.

Capacitor Testing

1. Heed WARNING in Silicon Diode Testing section.
2. Disconnect capacitor and connect leads of ohmmeter (set to highest scale) to capacitor terminals.

3. If capacitor is good, pointer will deflect, indicating capacitor is being charged, followed by a deflection in the opposite direction indicating partial discharge.

If there is no deflection, capacitor is "open" and must be replaced. Also, if meter needle moves and stops at one value, replace capacitor.

Replacement capacitors must be ordered from factory. When ordering, supply serial number of charger and microfarad (MFD) or (μ F) value printed on capacitor.

Troubleshooting

DANGER: ELECTRICAL SHOCK HAZARD — Before checking electrical components, turn OFF and remove fuses or disconnect switch (supplying AC power to charger), disconnect battery, and check for voltage on capacitors. Discharge through insulated screwdriver if there is any reading.

CAUTION: HIGH VOLTAGE FROM TEST EQUIPMENT can damage silicon diodes and other parts. Short silicon diodes with extremely short leads, or disconnect, before applying voltage from a "megger" or other high voltage test equipment.

The following chart contains information which can be used to diagnose and correct unsatisfactory operation or failure of various components of the unit. Each malfunction is followed by a suggested checking or inspection procedure. Refer to Connection/Schematic Diagram in the Diagrams chapter included in this manual.

Troubleshooting Guide

No charging current (Ammeter reads zero)

Check line voltage.

Close fused disconnect switch or repair open circuit.

Check for proper line voltage.

Refer to Line Voltage Changeover instructions in Installation chapter.

Check for blown fuses.

Replace blown fuses. See Table 4-1 for proper fuse sizes.

Check for internal short circuit (diode, winding, wiring).

Repair short circuit, or replace faulty component.

Check for "open" battery circuit.

Clean and tighten connections, especially battery cable connections.

Check Charge Control.

If control has electromechanical timer, check contacts. If they are not closing, repair or replace timer.

Connect a jumper from the red-white lead of Control Transformer T1 to the red lead of Contactor K1 coil. If charger starts and ammeter shows charging current when a battery is connected, check further for faulty printed circuit card on control and replace as necessary.

Check output circuit fuses. If fuse has blown, check for problem causing fuse to blow.

a. *Reverse battery connections, if polarity is wrong.*

b. *Determine whether a diode is shorted. Refer to Silicon Diode Testing in Maintenance chapter.*

Low charging current at beginning of cycle (battery fully discharged)

Check for failed capacitor (s) (one or more).

Replace capacitor if can is ruptured or fails test. Refer to Capacitor Testing in Maintenance chapter.

Check charging rate for "too low" adjustment.

Refer to Charging Rate Adjustment in Maintenance chapter.

Check line voltage for connection to proper input voltage.

Refer to Line Voltage Changeover instructions in Installation chapter.

Check battery for one or more defective cells.

Less than rated output on fully discharged battery (approximately 1/2 rated output) (3-phase chargers only)

Check input fuses (one probably blown). Check for either a shorted transformer, or wiring short circuit.

Replace as necessary.

High charging current at beginning of cycle (battery overcharged)

Check charging current for "too high" adjustment.

Refer to Charging Rate Adjustment in Maintenance chapter.

Charger does not shut OFF automatically or start automatically

Check Charge Control.

1. If equipped with electromechanical timer

A. Check timer switch contacts. If they are "welded" together and show continuity when timer is off, replace timer.

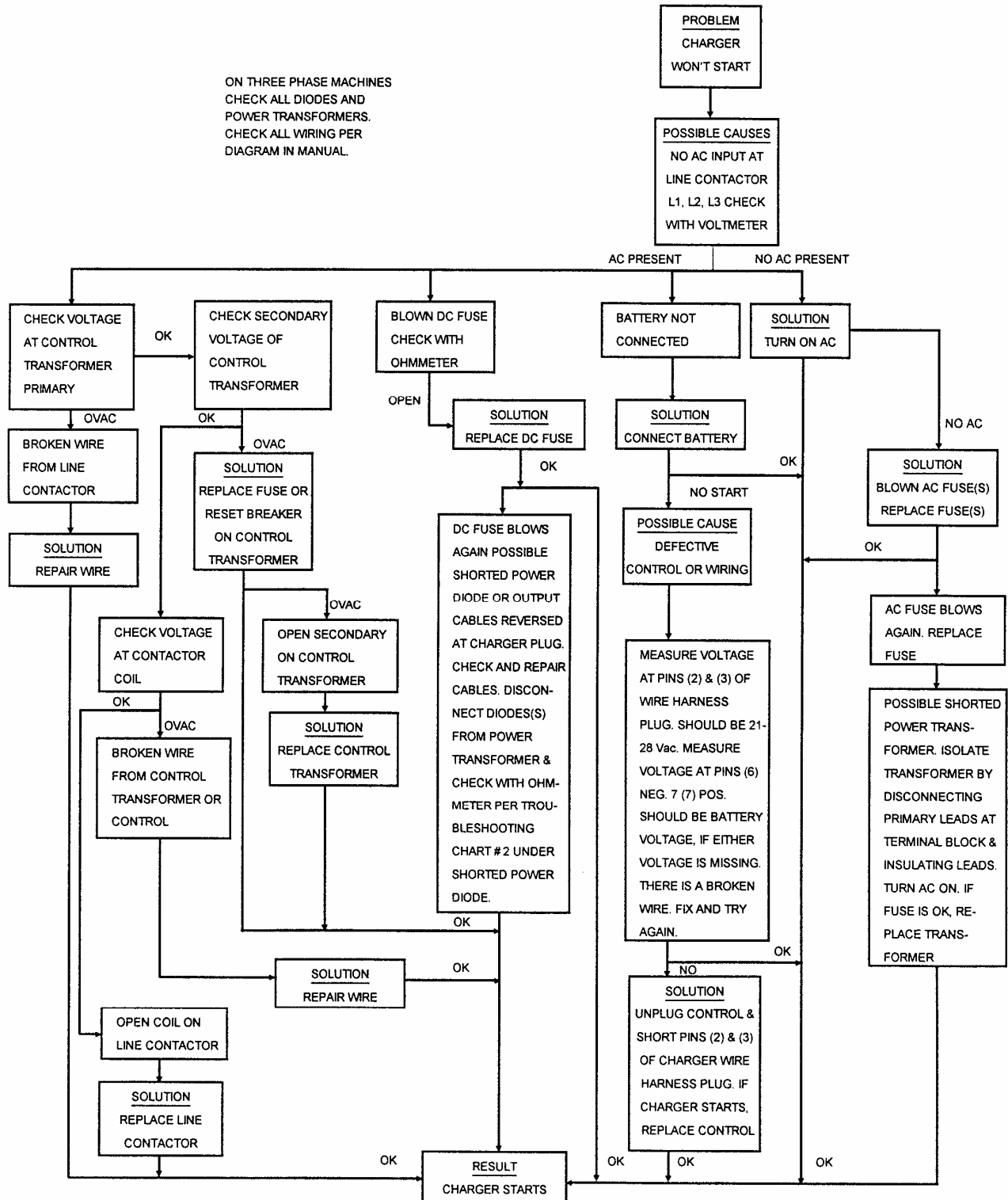
B. Check to see if timer control motor is running.

C. Replace timer if there is not continuity of timer motor field. Check AC power supply to motor.

2. If charger does not start automatically, check for 24 volts AC between the red-white lead and fuse F3 of control transformer T1. If 24V AC is present, connect a jumper from the red-white lead of control transformer T1 to the red lead of contactor K1 coil. If charger starts, check further for faulty printed circuit card on control and replace as necessary.

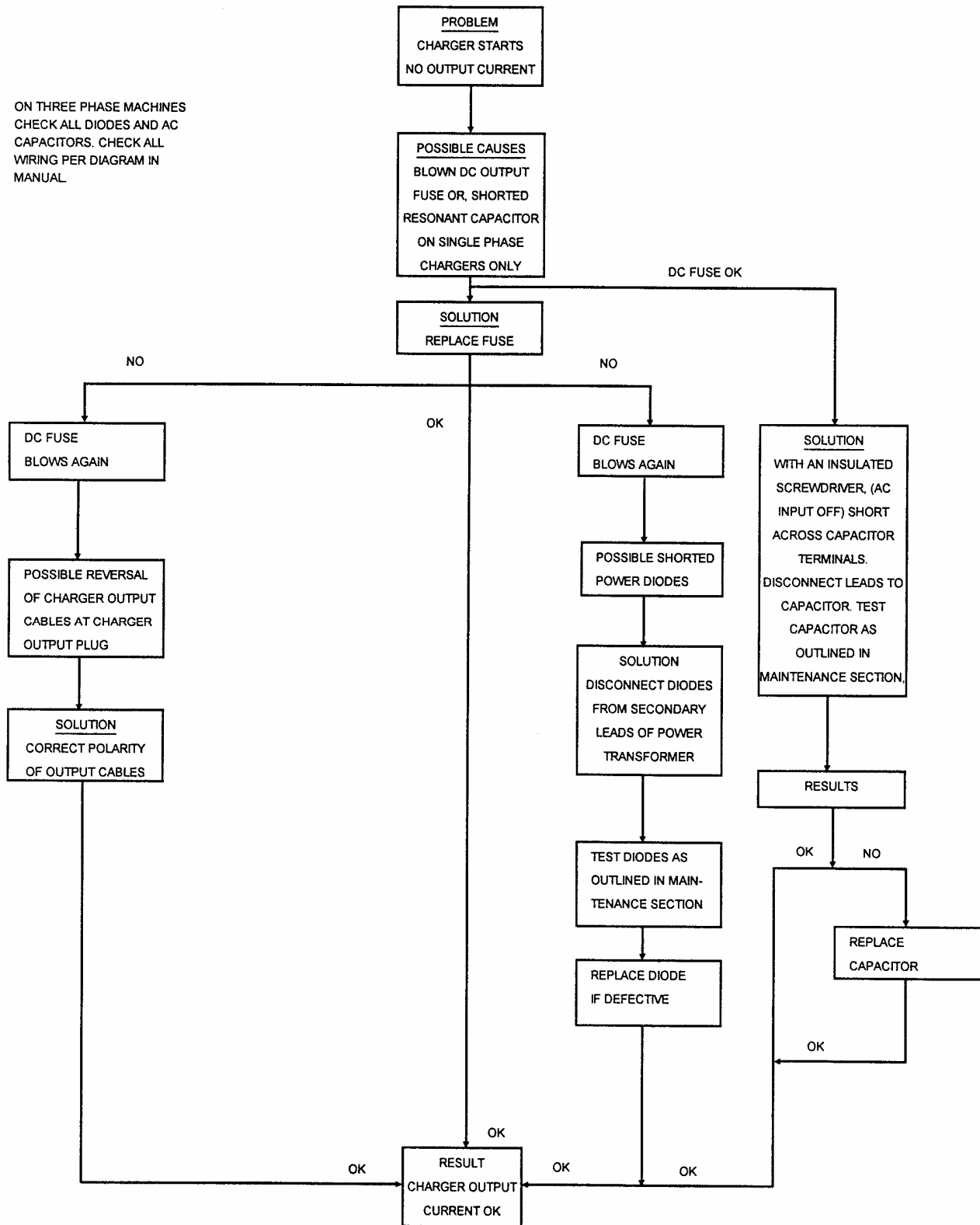
3. If charger does not stop automatically when equipped with voltage time or DV/DT controls, check to be sure charging voltage rises above 2.37 volts/cell during the cycle. If not, see low charging current or less than rated output above. If battery on-charge voltage rises above 2.37 volts/cell during the cycle, check for defective control printed circuit card.

DANGER: ELECTRICAL SHOCK HAZARD — Before checking electrical components, turn OFF and remove fuses of disconnect switch (supply AC power to charger), disconnect battery, and check for voltage on capacitors. Discharge through insulated screwdriver if there is any reading.

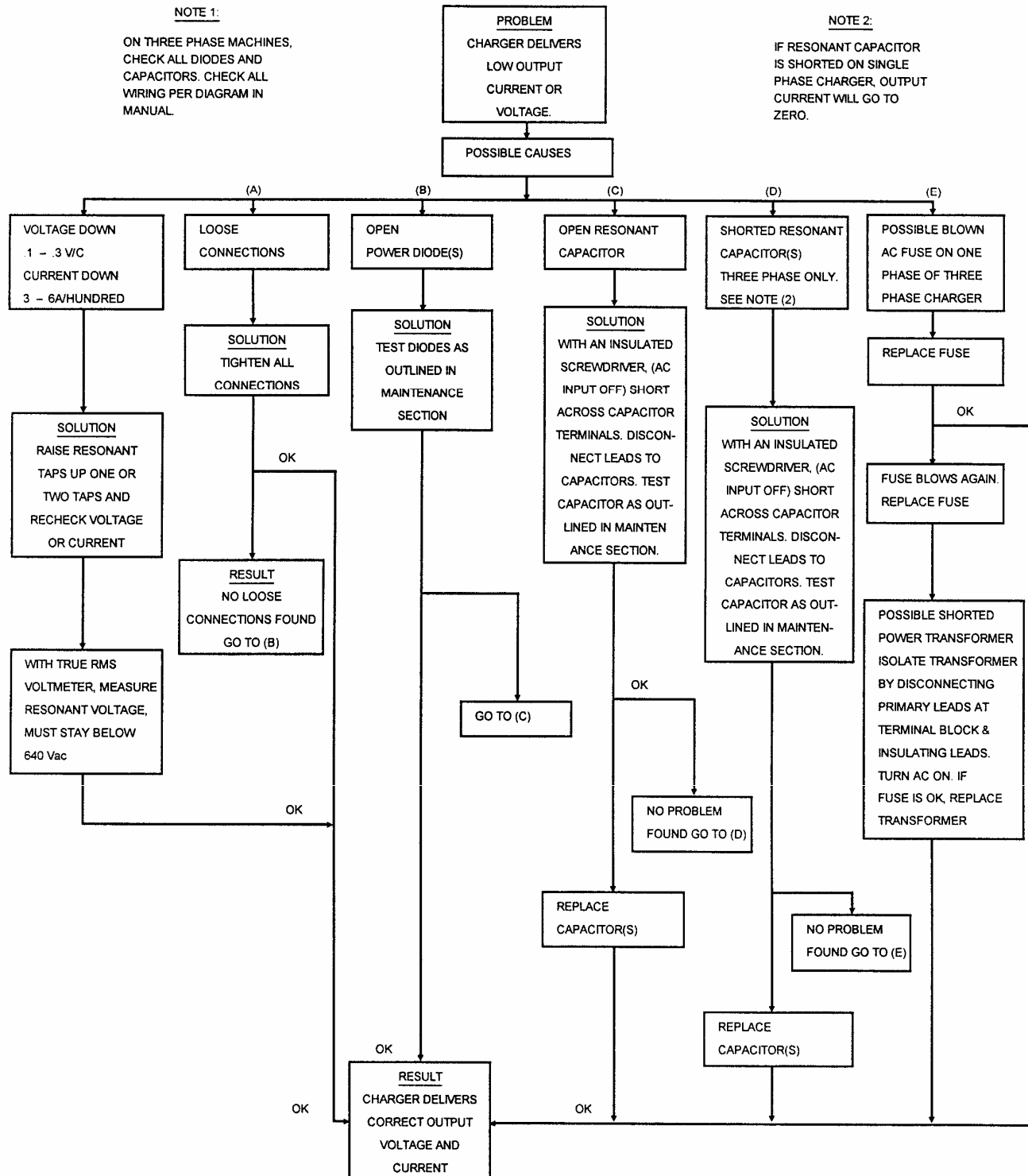


DANGER: ELECTRICAL SHOCK HAZARD — Before checking electrical components, turn OFF and remove fuses of disconnect switch (supply AC power to charger), disconnect battery, and check for voltage on capacitors. Discharge through insulated screwdriver if there is any reading.

ON THREE PHASE MACHINES
 CHECK ALL DIODES AND AC
 CAPACITORS. CHECK ALL
 WIRING PER DIAGRAM IN
 MANUAL.



DANGER: ELECTRICAL SHOCK HAZARD — Before checking electrical components, turn OFF and remove fuses of disconnect switch (supply AC power to charger), disconnect battery, and check for voltage on capacitors. Discharge through insulated screwdriver if there is any reading.



OPTIONS

The options listed in the following table of contents are those most commonly available. Special options not listed here will be covered by enclosed "addendum" sheets.

OPTION NUMBER	OPTION DESCRIPTION	PAGE
101	Remote Charge Control and Ammeter.....	7-1
500	Fused Disconnect Switch and 24V Control Circuit.....	7-1

Remote Charge Control — Option 101

This option provides a separate remote control box containing charger's Charge Control.

This remote control box must be connected to charger as instructed on label provided with remote charge control. Closely observe wire color coding.

Operate this charger as instructed in Operation chapter of this manual and as instructed under any applicable option descriptions.

Fused Disconnect Switch

(Refer to Figure 7-1) — Option 500

This option is provided to meet certain "JIC" requirements. The switch must be in the open (OFF) position to disconnect all AC power into charger and to allow front door to be opened. With switch in open position, door can be opened by turning slotted latch screw to the left.

Disconnect switch is for *emergency or service use* only.

Charge cycle should continue until automatically shut off. If cycle must be interrupted, turn timer to "OFF" or push "STOP" button.

A control circuit operating on 24 volts is also provided to help assure operator safety.

Fused Disconnect Switch
 (Shown IN "On" Position)

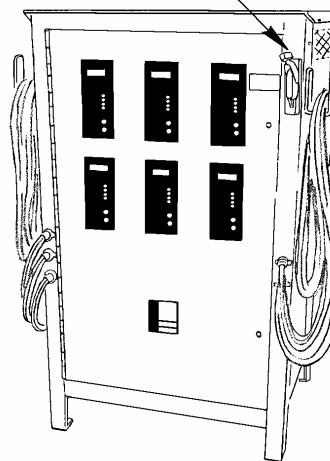


Figure 7-1 Fused Disconnect Switch

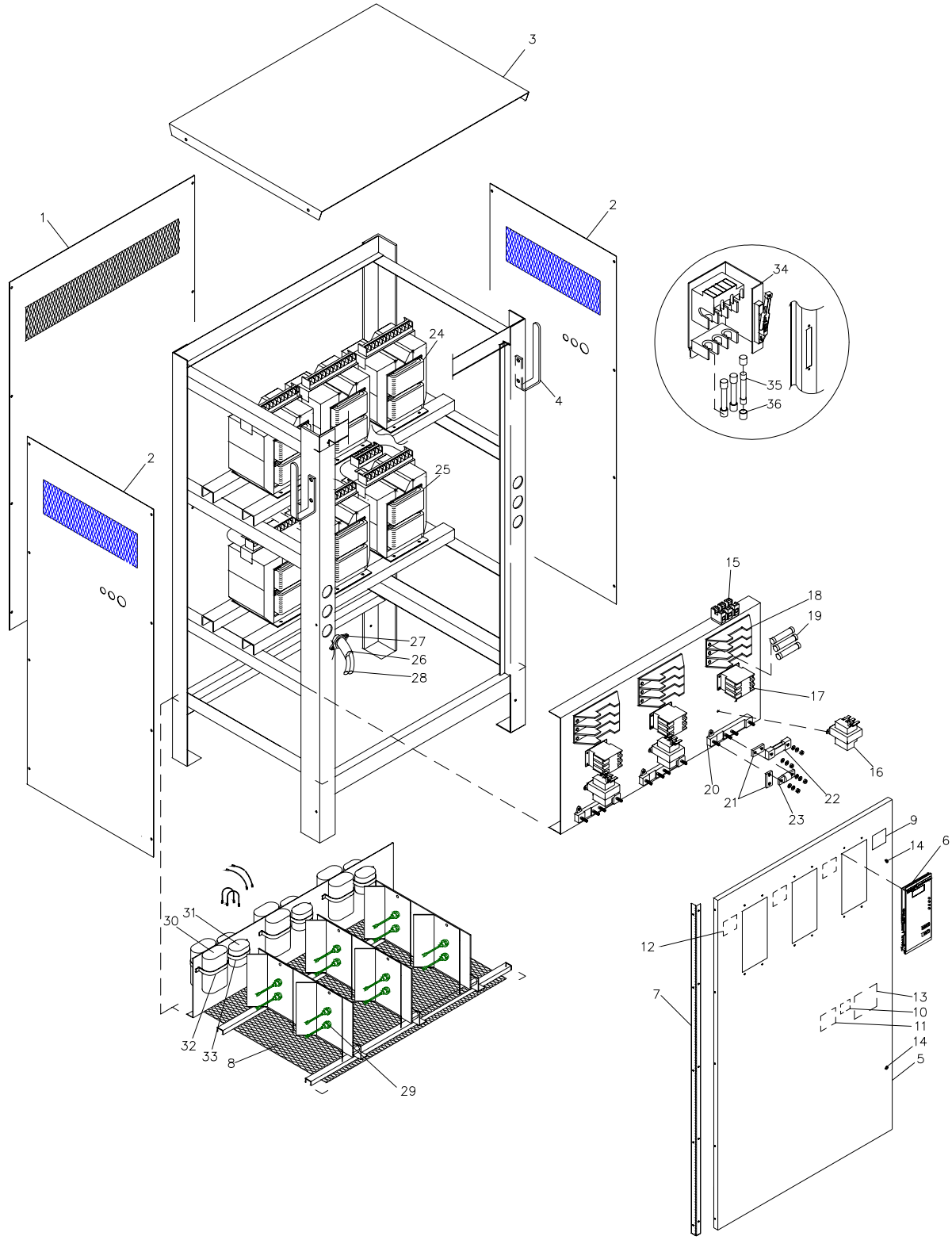


Figure 8-1

3 PHASE PARTS LIST

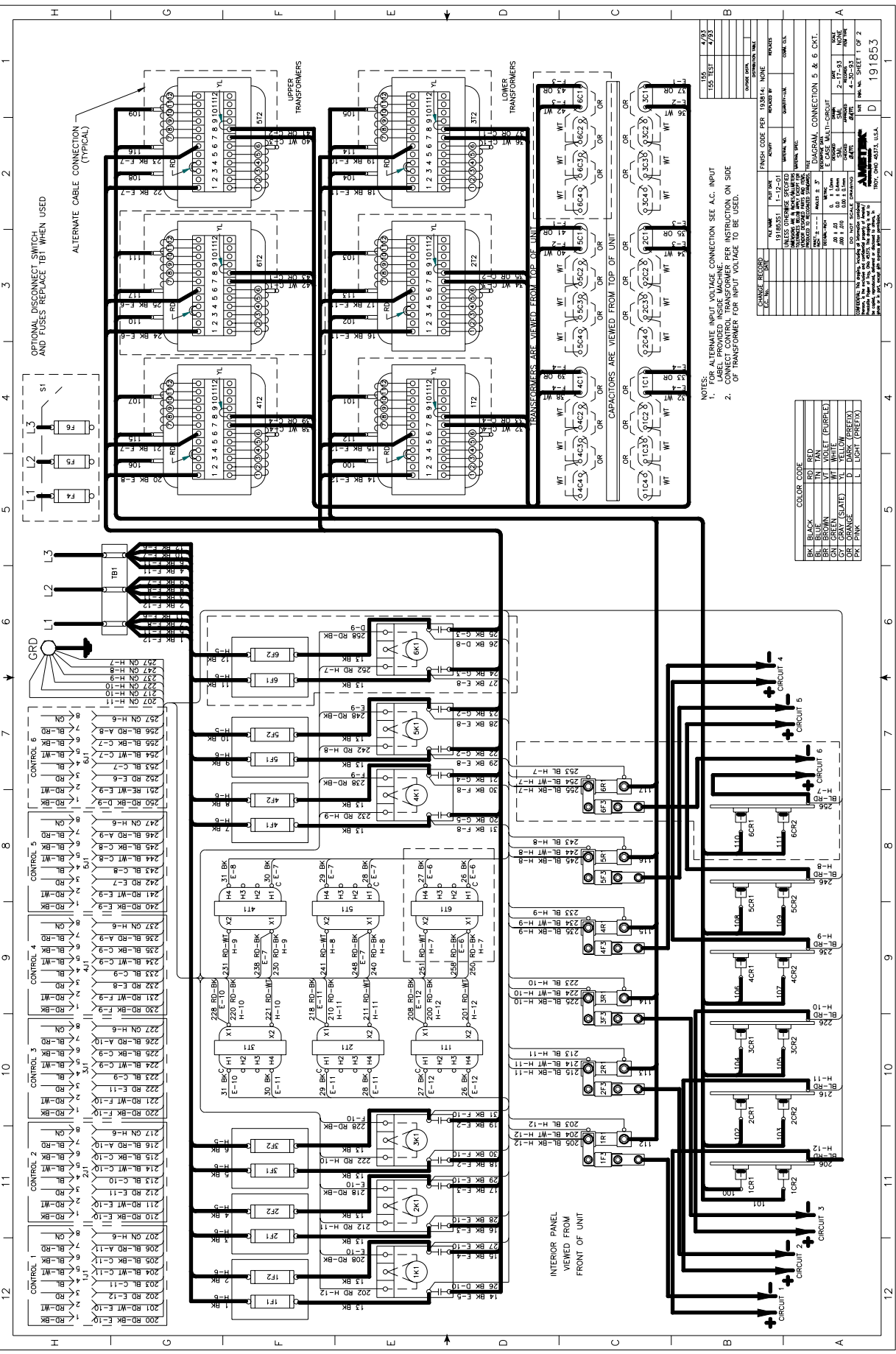
ITEM	DESCRIPTION	500402-200	500642-200	500643-200
		1050E3-24T3M	880E3-24T3M	880E3-24T2M
1	PANEL, REAR	192043	192043	192043
2	PANEL, SIDE, RIGHT & LEFT	192038	192038	192038
3	PANEL, TOP	192036	192036	192036
4	HANGER, CABLE	397752	397752	397752
5	DOOR	194024	194024	192073
6	PANEL, CONTROL	CONTACT FACTORY	CONTACT FACTORY	CONTACT FACTORY
7	HINGE, DOOR	192037	192037	192037
8	BASE, SCREEN	392098-1	392098-1	392098-1
9	LABEL-DANGER	404099	404099	404099
10	LABEL-DANGER, VOLTAGE	404054	404054	404054
11	LABEL-WARNING INPUT	406434	406434	406434
12	LABEL-CHARGING	402717	402717	402717
13	LABEL-AC INPUT	191457	191457	191457
14	LATCH, DOOR	403425	403425	403525
15	BLOCK, INPUT TERMINAL (NOT USED W/ DISCONNECT SWITCH)	400525-2	400525-2	400525-2
16	TRANSFORMER, CONTROL	406247-2	406247-2	406247-2
17	CONTACTOR	406243-1	406243-1	406243-1
18	BLOCK, FUSE	404605-5	404605-5	404605-5
19	FUSE (208 VAC)	W-10386-11	W10386-9	W10386-9
	FUSE (240 VAC)	W-10386-11	W10386-9	W10386-9
	FUSE (480 VAC)	W-10386-9	W10386-9	W10386-9
	FUSE (575 VAC)	N/A	N/A	N/A
20	INSULATOR, SHUNT	193114	193114	193114
21	BUS BAR	392458	392458	392458
22	SHUNT, CURRENT	193125-2	193125-2	193125-2
23	FUSE, DC OUTPUT	Y-1890-6	Y1890-5	Y1890-5
24	TRANSFORMER, TEASER AY.	192795	192758	192758
25	TRANSFORMER, MAIN AY.	192794	192757	192757
26	COVER, OUTER NEOPRENE	378234-13	378234-13	378234-13
27	CONNECTOR, STRAIN RELIEF	W-10080-5	W10080-5	W10080-5
28	CABLE, CHARGING OUTPUT	396263-4	396263-4	396263-4
29	DIODE	402832-3	402832-3	402832-3
30	CAPACITOR	TRY-154-6	TRY154-6	TRY154-6
31	CAPACITOR	TRY-154-1	TRY154-1	TRY154-1
32	BRACKET MTG, CAPACITOR	TRY-174-3	TRY174-3	TRY174-3
33	BRACKET MTG, CAPACITOR	TRY-174-3	TRY174-3	TRY174-3
34	SWITCH, DISCONNECT (WHEN USED)	N/A	N/A	N/A
35	FUSE, INPUT DISCONNECT SWITCH (WHEN USED)	N/A	N/A	N/A
36	FUSE, REDUCER 2 PER FUSE (WHEN USED)	N/A	N/A	N/A

1 PHASE PARTS LIST

ITEM	DESCRIPTION	500640-200	500641-200
		880E3-12S5M	510E3-12S6M
1	PANEL, REAR	192043	192043
2	PANEL, SIDE, RIGHT & LEFT	192038	192038
3	PANEL, TOP	192036	192036
4	HANGER, CABLE	397752	397752
5	DOOR	192044	192044
6	PANEL, CONTROL	CONTACT FACTORY	CONTACT FACTORY
7	HINGE, DOOR	192037	192037
8	BASE, SCREEN	392098-1	392098-1
9	LABEL-DANGER	404099	404099
10	LABEL-DANGER, VOLTAGE	404054	404054
11	LABEL-WARNING INPUT	406434	406434
12	LABEL-CHARGING	402717	402717
13	LABEL-AC INPUT	191457	191457
14	LATCH, DOOR	403425	403525
15	BLOCK, INPUT TERMINAL (NOT USED W/ DISCONNECT SWITCH)	400525-2	400525-2
16	TRANSFORMER, CONTROL	406247-2	406247-2
17	CONTACTOR	406243-1	406243-1
18	BLOCK, FUSE	404605-5	404605-4
19	FUSE (208 VAC)	W10386-10	W10386-7
	FUSE (240 VAC)	W10386-9	W10386-6
	FUSE (480 VAC)	W10386-9	W10386-5
	FUSE (575 VAC)	N/A	N/A
20	INSULATOR, SHUNT	193114	193114
21	BUS BAR	392458	392458
22	SHUNT, CURRENT	193125-2	193125-2
23	FUSE, DC OUTPUT	Y1890-5	Y1890-4
24	TRANSFORMER, TEASER AY.	N/A	N/A
25	TRANSFORMER, MAIN AY.	192932	192888
26	COVER, OUTER NEOPRENE	378234-13	378234-13
27	CONNECTOR, STRAIN RELIEF	W10080-5	W10080-5
28	CABLE, CHARGING OUTPUT	396263-4	396263-2
29	DIODE	402832-3	402832-3
30	CAPACITOR	TRY154-6	TRY154-6
31	CAPACITOR	N/A	N/A
32	BRACKET MTG, CAPACITOR	TRY174-3	TRY174-3
33	BRACKET MTG, CAPACITOR	N/A	N/A
34	SWITCH, DISCONNECT (WHEN USED)	N/A	N/A
35	FUSE, INPUT DISCONNECT SWITCH (WHEN USED)	N/A	N/A
36	FUSE, REDUCER 2 PER FUSE (WHEN USED)	N/A	N/A

DIAGRAMS

Model no. Information		DIAGRAM OUTPUT SCHEMATIC	OUTLINE DIMENSION
CASE SIZE	LAST 4 DIGITS		
D	S2M, S3M, S4M	191854	191865
E	S5M, S6M	191853	191865
E	T2M	196008	191865
E	T3M	194028	191865
See model number description inside front cover.			



OPTIONAL DISCONNECT SWITCH AND FUSES REPLACE TB1 WHEN USED

ALTERNATE CABLE CONNECTION (TYPICAL)

UPPER TRANSFORMERS

LOWER TRANSFORMERS

TRANSFORMERS ARE WIRED FROM TOP OF UNIT

CAPACITORS ARE VIEWED FROM TOP OF UNIT

- NOTES:
- FOR ALTERNATE INPUT VOLTAGE CONNECTION SEE A.C. INPUT CONNECTION INSTRUCTIONS PER INSTRUCTION ON SIDE OF TRANSFORMER FOR INPUT VOLTAGE TO BE USED.
 - FOR ALTERNATE INPUT VOLTAGE CONNECTION SEE A.C. INPUT CONNECTION INSTRUCTIONS PER INSTRUCTION ON SIDE OF TRANSFORMER FOR INPUT VOLTAGE TO BE USED.

CHANGE RECORD	DATE	BY	REASON
155	TEST	4/73	
156	TEST	4/73	

FILE NAME	FILE DATE	FILE TIME	FILE USER
155	TEST	4/73	
156	TEST	4/73	

FINISH CODE PER 1958/4	MARKER	REMARKS

DATE	BY	REVISION

DIAGRAM CONNECTION 5 & 6 CKT.	WIRE NO.	MARKER	REMARKS

WIRE NO.	MARKER	REMARKS

WIRE NO.	MARKER	REMARKS

WIRE NO.	MARKER	REMARKS

WIRE NO.	MARKER	REMARKS

WIRE NO.	MARKER	REMARKS

WIRE NO.	MARKER	REMARKS

WIRE NO.	MARKER	REMARKS

WIRE NO.	MARKER	REMARKS

WIRE NO.	MARKER	REMARKS

WIRE NO.	MARKER	REMARKS

WIRE NO.	MARKER	REMARKS

WIRE NO.	MARKER	REMARKS

191853

191853

191853

191853

191853

191853

191853

191853

191853

191853

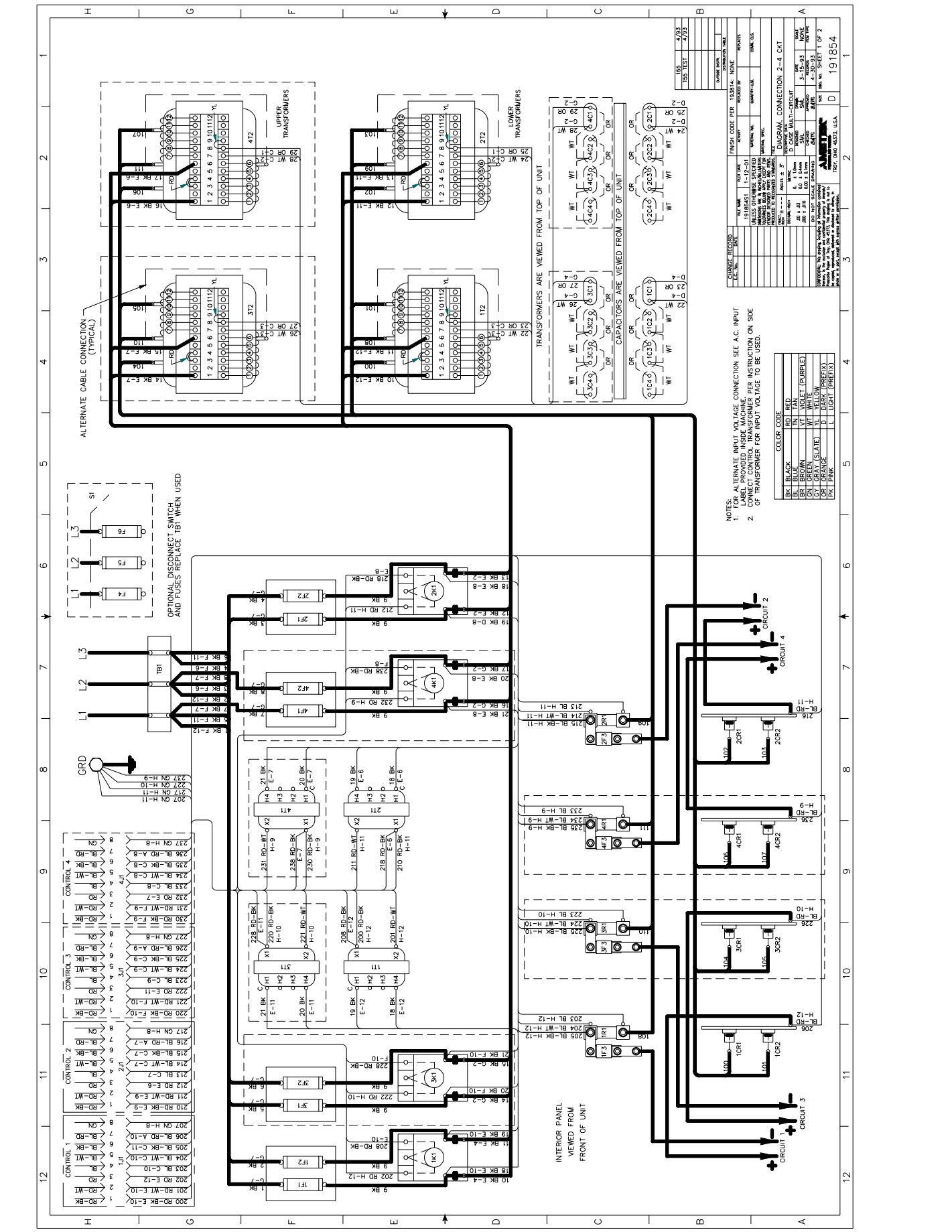
191853

191853

191853

191853

191853



NOTES:
 1. FOR ALTERNATE INPUT VOLTAGE CONNECTION SEE A.C. INPUT PANEL PROVIDED INSIDE UNITS. WALKER PER INSTRUCTION ON SIDE OF TRANSFORMER FOR INPUT VOLTAGE TO BE USED.
 2. OF TRANSFORMER FOR INPUT VOLTAGE TO BE USED.

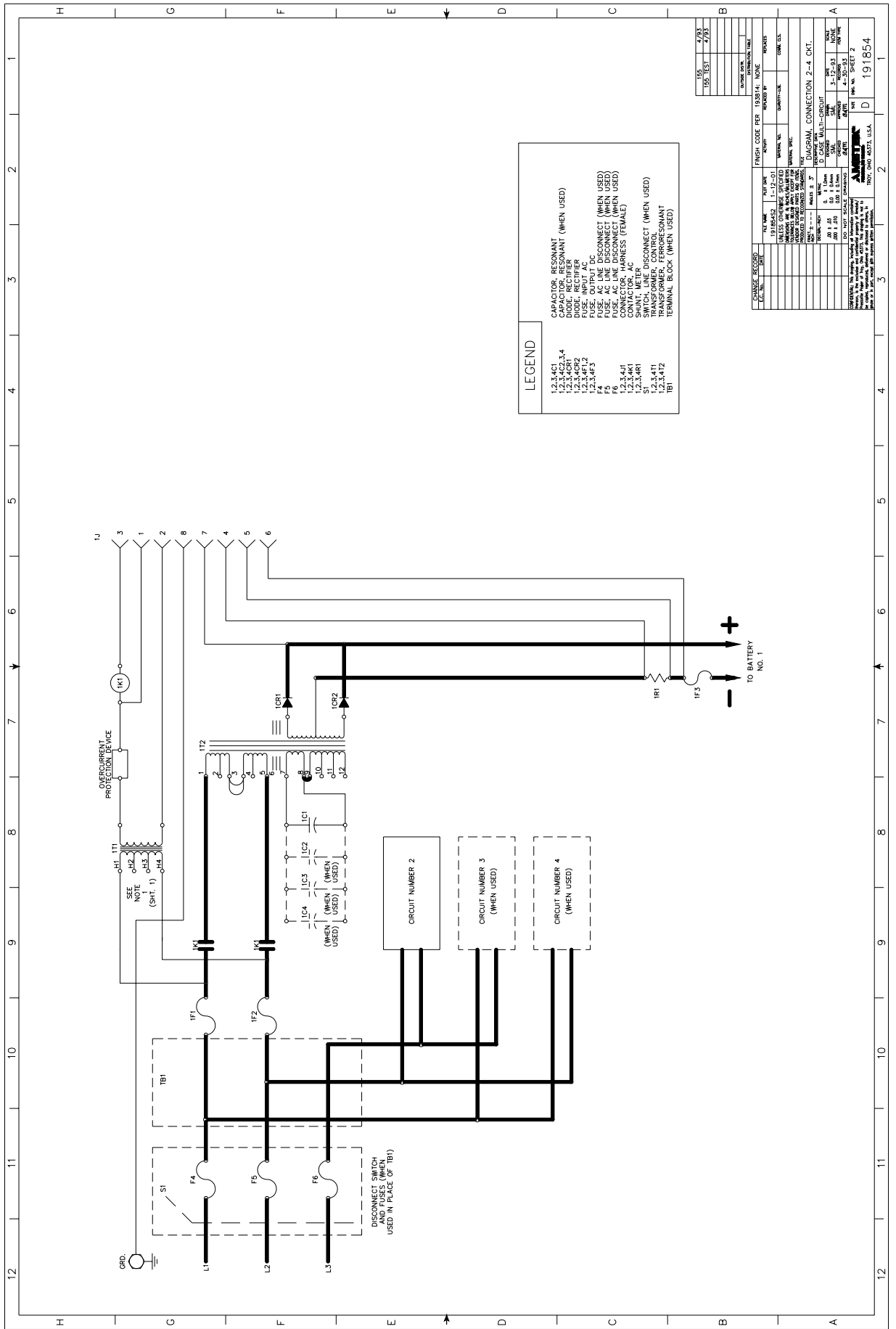
BL	BLACK
BU	BLUE
BR	BROWN
GR	GRAY (SLATE)
OR	ORANGE
PK	PINK
RD	RED
TA	TAN
WT	WHITE (VIOLET (PURPLE))
YL	YELLOW
LT	LIGHT (GREEN)

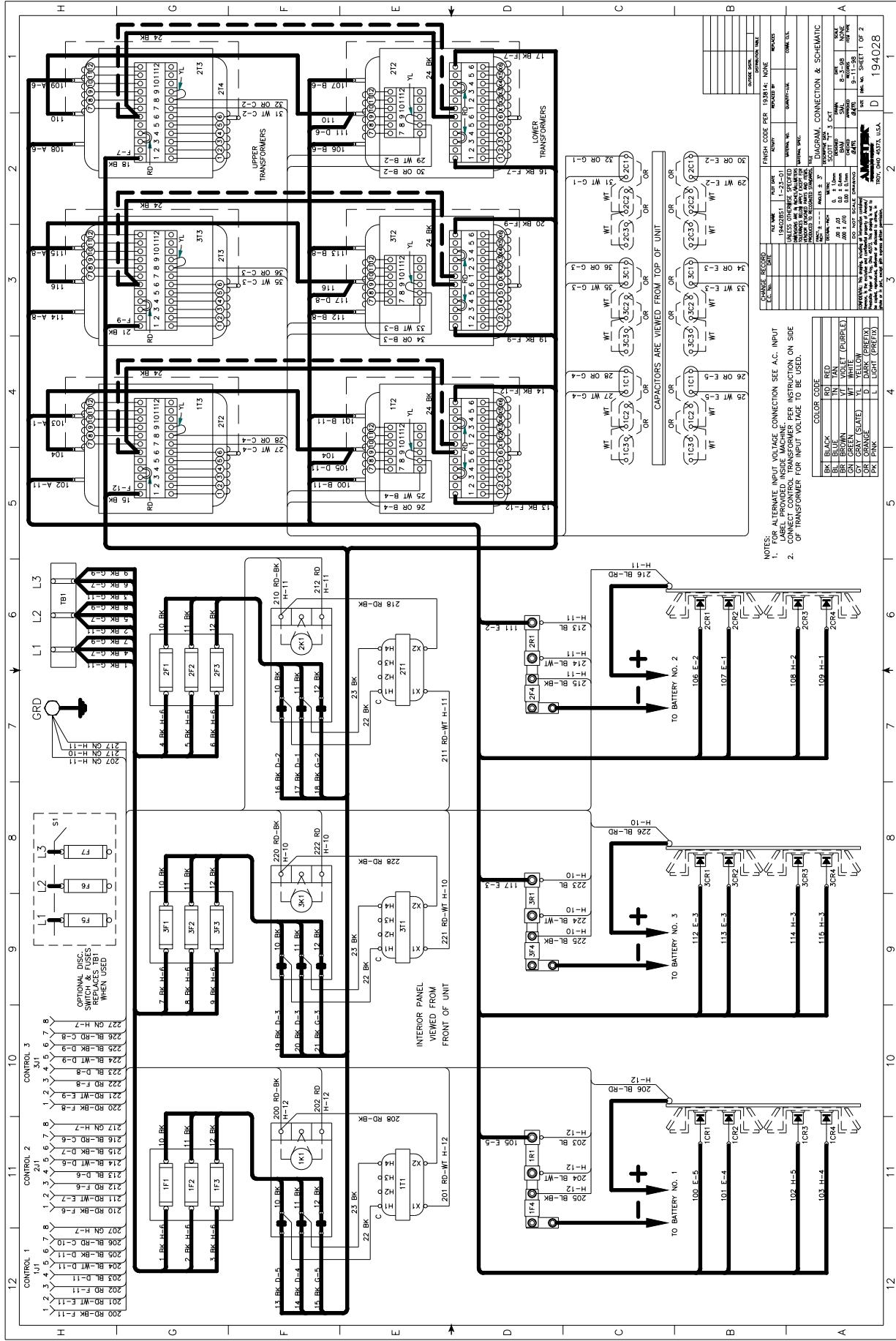
DATE	BY	REASON
1955	TEST	4/93
1955	TEST	4/93

REV.	DATE	BY	REVISION
1			
2			
3			
4			
5			
6			
7			
8			
9			
10			
11			
12			
13			
14			
15			
16			
17			
18			
19			
20			
21			
22			
23			
24			

REV.	DATE	BY	REVISION
1			
2			
3			
4			
5			
6			
7			
8			
9			
10			
11			
12			
13			
14			
15			
16			
17			
18			
19			
20			
21			
22			
23			
24			

DIAGRAM CONNECTION 2-4 CKT
 D CASE MULTI-CIRCUIT
 3-15-53 NONE
 4-20-53 NONE
 4/93
 4/93
 191854
 TROY, OHIO 43078, U.S.A.





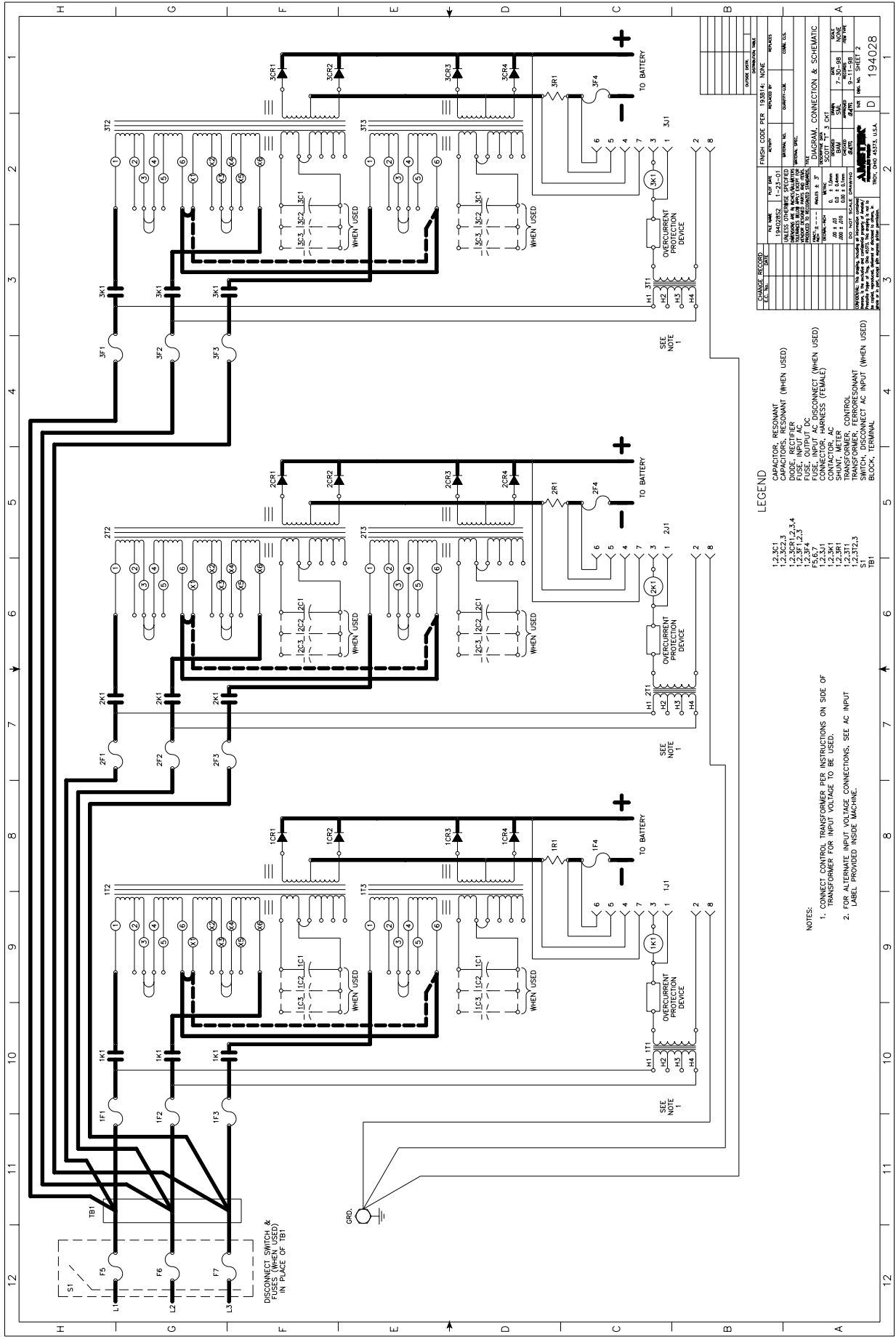
NOTES:
 1. FOR ALTERNATE INPUT VOLTAGE CONNECTION SEE A.C. INPUT LABEL PROVIDED INSIDE MACHINE.
 2. CONNECT CONTROL TRANSFORMER PER INSTRUCTION ON SIDE OF TRANSFORMER FOR INPUT VOLTAGE TO BE USED.

COLOR CODE	
BK	BLACK
RD	RED
BR	BROWN
VI	VIOLET (PURPLE)
WT	WHITE
GR	GREEN
OR	ORANGE
DR	DARK (PREFIX)
LT	LIGHT (PREFIX)
PK	PINK

CHANGE RECORD	DATE	BY	REASON

DIAGRAM CONNECTION & SCHEMATIC	DATE	BY	REASON

REV. 10-19-63
 194028
 SHEET 1 OF 2



DISCONNECT SWITCH & FUSES (WHEN USED) IN PLACE OF TBT1

CHANGE RECORD	DATE	BY	REASON

FINISH CODE PER 193314	WORK CENTER	DATE	BY	REASON

DIAGRAM, CONNECTION & SCHEMATIC	DATE	BY	REASON

TEST	DATE	BY	REASON

TEST	DATE	BY	REASON

TEST	DATE	BY	REASON

TEST	DATE	BY	REASON

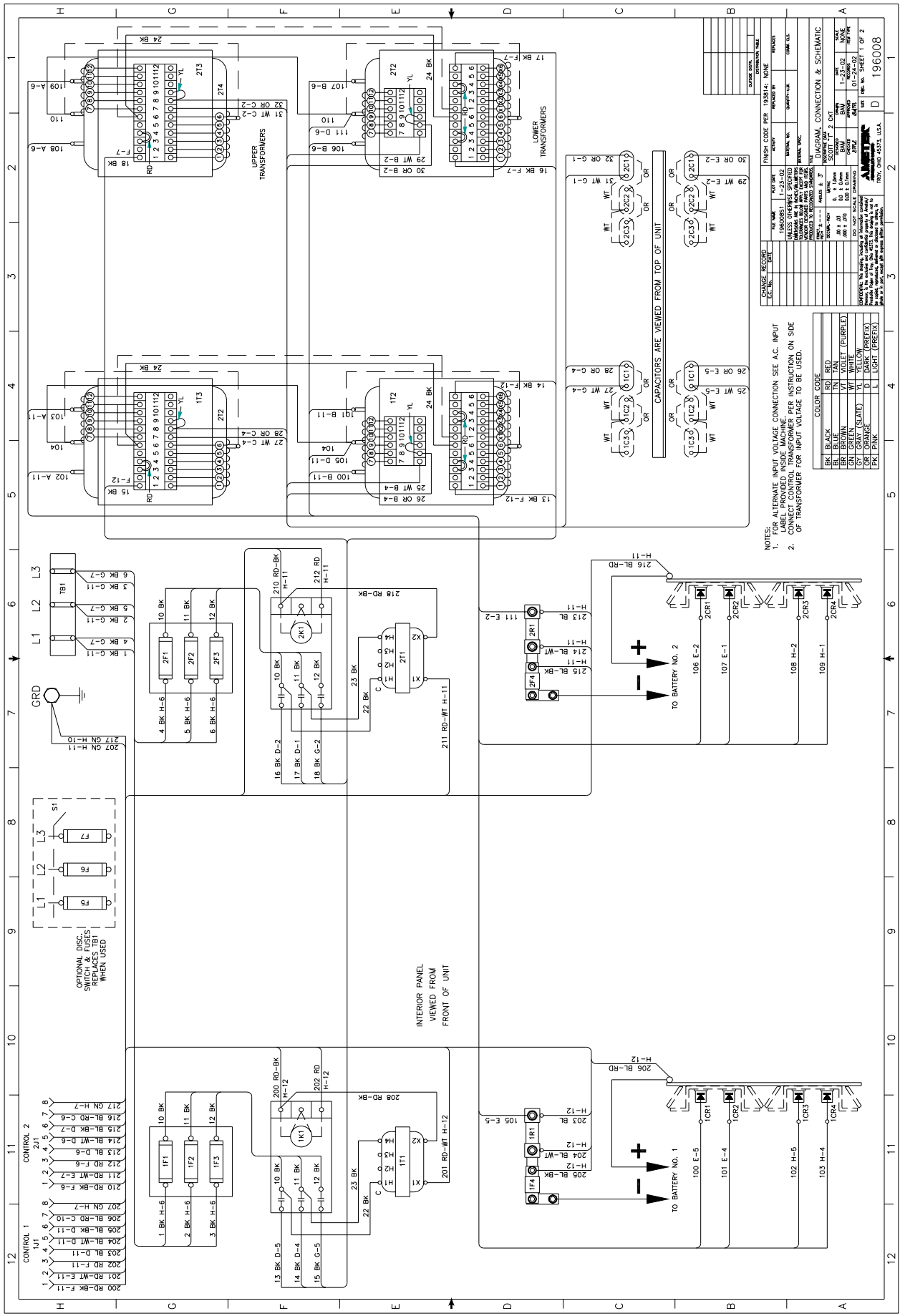
194028

LEGEND

- 1.2.3C1
- 1.2.3C2,3
- 1.2.3C4,1,2,3,4
- 1.2.3F4
- 1.2.3F7
- 1.2.3R1
- 1.2.3R2
- 1.2.3R3
- 1.2.3R4
- 1.2.3T1
- 1.2.3T2
- 1.2.3T3
- S1

- NOTES:
- CONNECT CONTROL TRANSFORMER PER INSTRUCTIONS ON SIDE OF TRANSFORMER FOR INPUT VOLTAGE TO BE USED.
 - FOR ALTERNATE INPUT VOLTAGE CONNECTIONS, SEE AC INPUT LABEL PROVIDED INSIDE MACHINE.

- CAPACITOR, RESONANT
- DIODE, RECTIFIER
- FUSE, INPUT AC DISCONNECT (WHEN USED)
- FUSE, OUTPUT DC
- SHUNT, METER
- TRANSFORMER, FERRORESONANT
- SWITCH, DISCONNECT AC INPUT (WHEN USED)
- BLOCK, TERMINAL



FINISH CODE PER 193814: NONE

UNLESS OTHERWISE SPECIFIED
 ALL DIMENSIONS ARE IN INCHES UNLESS OTHERWISE SPECIFIED
 DIMENSIONS IN PARENTHESES REFER TO DIMENSIONS OF RECORDED TOLERANCES

SYMBOL	DESCRIPTION	QUANTITY	NOTES
WT	WIRE		
RD	RESISTOR		
CR	CAPACITOR		
REL	RELAY		
SW	SWITCH		
TR	TRANSFORMER		

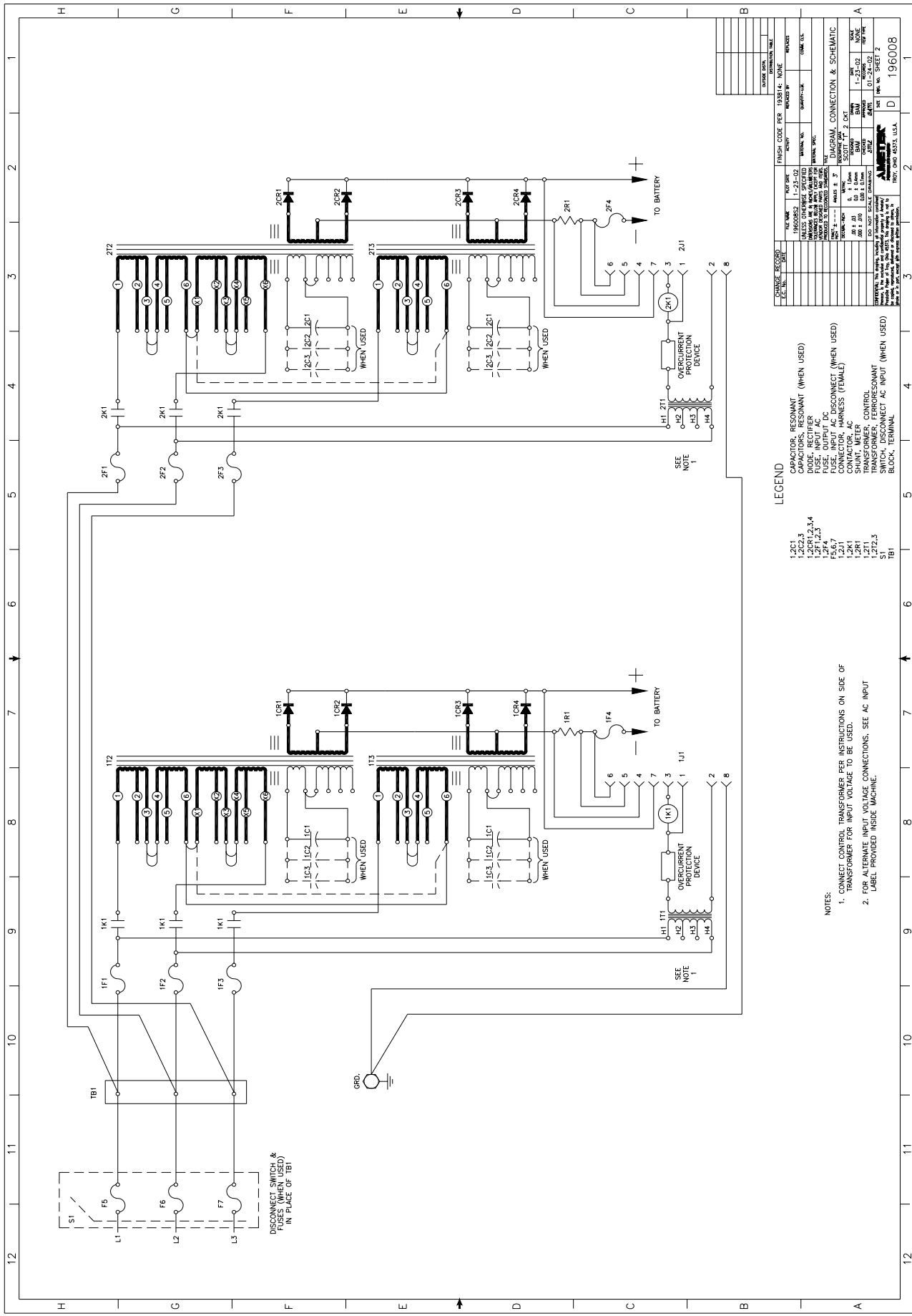
CLASGRAM CONNECTION & SCHEMATIC

DATE: 10-10-54
 DRAWN BY: J. W. BROWN
 CHECKED BY: J. W. BROWN
 APPROVED BY: J. W. BROWN
 PART NO. 193814-101

NOTES:

- FOR ALTERNATE INPUT VOLTAGE CONNECTION SEE A.C. INPUT
- CONNECT CONTROL TRANSFORMER PER INSTRUCTION ON SIDE OF TRANSFORMER FOR INPUT VOLTAGE TO BE USED.

COLOR	CODE
BK	BLACK
BL	BLUE
BR	BROWN
GR	GRAY (SLATE)
OR	ORANGE
PK	PINK
RD	RED
IN	TAN
VT	VIOLET (PURPLE)
WH	WHITE
YL	YELLOW
DR	DARK (PREFEX)
LI	LIGHT (PREFEX)



CHANGE RECORD

DATE	DESCRIPTION	BY	REASON

FINISH CODE PER 192814: NONE
 WORKED BY: _____
 CHECKED BY: _____
 DRAWN BY: _____
 TITLE: _____

ISSUED FOR: _____
 CONTRACT NO.: _____
 PART NO.: _____
 REVISION: _____

DATE: _____
 TIME: _____

DIAGRAM CONNECTION & SCHEMATIC

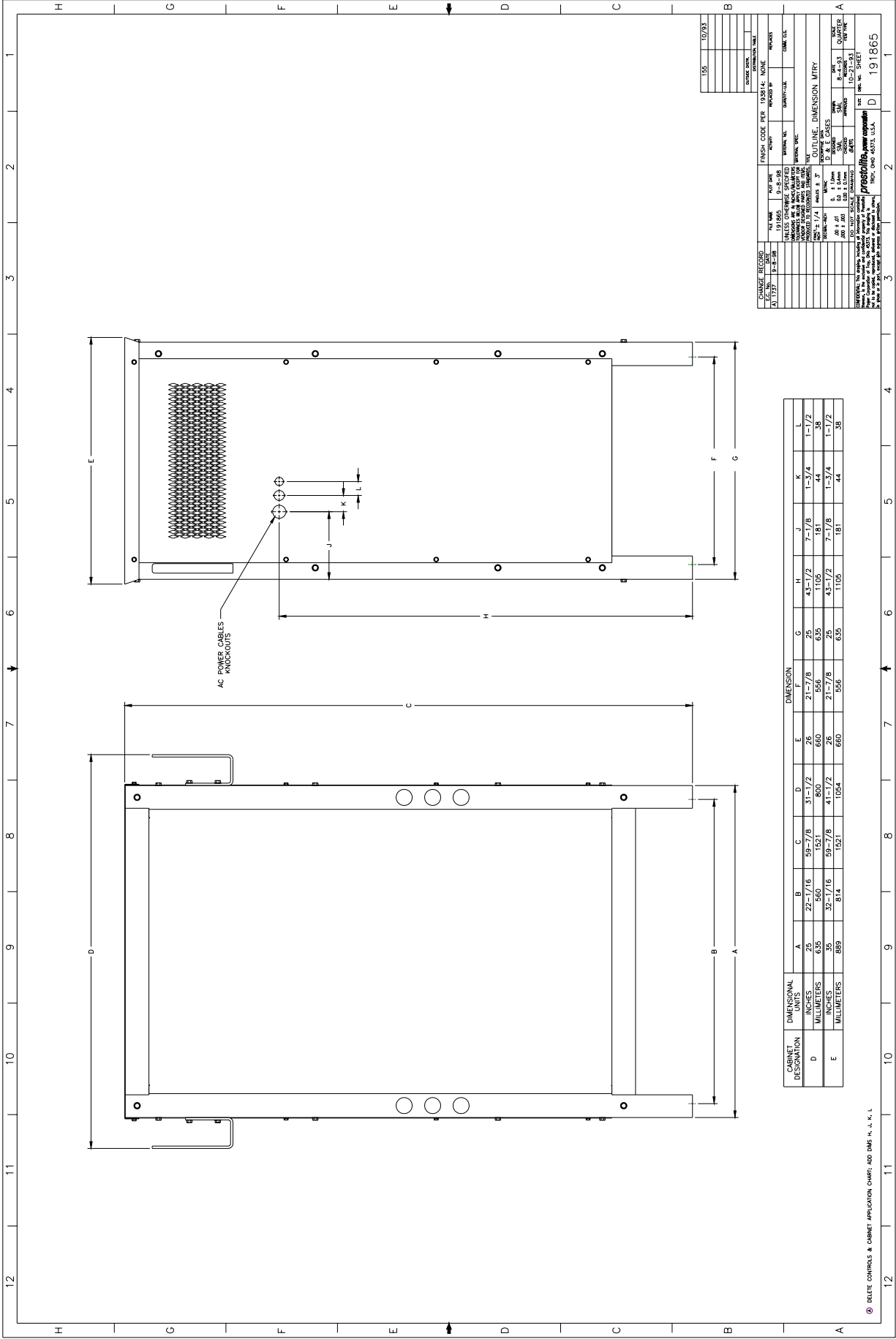
SCALE: _____
 SHEET NO.: _____
 SHEET 2

REV. 196008

- LEGEND
- 1.2C2,3 CAPACITOR, RESONANT
 - 1.2CR1,2,3,4 DIODE, RECTIFIER
 - 1.2F1,2,3 FUSE, OUTPUT DC
 - 1.2F4 FUSE, INPUT AC DISCONNECT (WHEN USED)
 - 1.2K1 CONTACTOR, AC
 - 1.2M1 SHUNT METER
 - 1.2R1 TRANSFORMER, CONTROL
 - 1.2T1 TRANSFORMER, RESONANT
 - 1.2V1 SWITCH, DISCONNECT AC INPUT (WHEN USED)
 - TB1 BLOCK, TERMINAL

NOTES:

1. CONNECT CONTACTOR TRANSFORMER PER INSTRUCTIONS ON SIDE OF TRANSFORMER FOR INPUT VOLTAGE TO BE USED.
2. FOR ALTERNATE INPUT VOLTAGE CONNECTIONS, SEE AC INPUT LABEL PROVIDED INSIDE MACHINE.



CABINET DESIGNATION		DIMENSION										
A	B	C	D	E	F	G	H	I	J	K	L	
INCHES	22-7/8	59-7/8	31-7/2	660	21-7/8	635	43-1/2	105	44	1-7/2	38	
MILLIMETERS	635	1521	807	660	556	635	1105	26	181	44	38	
INCHES	35	59-7/8	41-1/2	26	21-7/8	25	43-1/2	7-1/8	1-3/4	44	1-1/2	
MILLIMETERS	889	1521	1054	660	556	635	1105	181	44	44	38	

CHANGE RECORD	DATE	BY	REASON	DESCRIPTION
01/17/21	01-25-21	191865	9-8-21	9-8-21

FINISH	DATE PER	BY	DESCRIPTION
191865	9-8-21	191865	9-8-21

DESCRIPTION	QUANTITY	UNIT
191865	1	EA

DATE	BY	DESCRIPTION
9-8-21	191865	9-8-21

OUTLINE, DIMENSION, MTRY

D & E CASES

10/23

© DELTE CONROLS & CABINET APPLICATION GROUP, 191865 H. J. K. L.

WARRANTY

AMETEK/PRESTOLITE POWER INDUSTRIAL BATTERY CHARGERS

AMETEK/Prestolite Power (hereinafter called "Prestolite") warrants that each new and unused Industrial Battery Charger manufactured and supplied by it is of good workmanship and is free from any inherent mechanical defects, provided that (1) the product is installed and operated in accordance with generally accepted industrial standards and in accordance with the printed instructions of Prestolite, (2) the product is used under normal conditions for which designed, (3) the product is not subjected to misuse, negligence or accident, and (4) the product receives proper care, protection and maintenance under supervision of competent personnel. This warranty is subject to the following provisions:

1. **PRODUCTS AND PARTS WARRANTED.** Subject to the exceptions listed below each Industrial Battery Charger is warranted for a period of one (1) year from the date of its shipment by Prestolite, provided the charger is used in accordance with Prestolite's published performance rating for the unit involved. The exceptions to this warranty are as follows:
 - a) Power transformers and silicon diodes on unit (s) shipped after January 1, 1997 are warranted for ten (10) years after Prestolite's shipment of the unit(s) of which they are a part, provided however that during the last nine (9) years of this 10 year period the warranty covers parts replacement only – no labor or other services are provided by Prestolite, nor shall Prestolite be obligated to reimburse the owner or any other person for any work performed.
 - b) Primary switch contacts, fuses, bulbs, and filters are not warranted unless found to be defective prior to use.
2. **COMMENCEMENT OF WARRANTY TIME PERIODS.** The warranty periods indicated in the Warranty Schedule shall commence on the date of shipment by Prestolite.
3. **PERSONS COVERED BY WARRANTY.** This warranty is extended by Prestolite only to the purchaser of new equipment from Prestolite or one of its authorized distributors. The products purchased under this agreement shall be used exclusively by the buyer and its employees and by no other persons, and therefore there shall be no third party beneficiary to this warranty.
4. **LIMITATION OF REMEDY.** The existence of claimed defects in any product covered by this warranty is subject to Prestolite's factory inspection and judgement. Prestolite's liability is limited to repair of any defects found by Prestolite to exist or, at Prestolite's option, the replacement of the defective product. F.O.B. factory after the defective product has been returned by the purchaser at its expense to Prestolite's shipping place. Replacement and exchange parts will be warranted for the remainder of the original Industrial Battery Charger Warranty or for a period of ninety (90) days, whichever is greater. Prestolite and its authorized distributors or dealers shall not be liable for direct or indirect, special or consequential damages in excess of such repair or replacement. In no event shall the purchaser be entitled to recover for contingent expenses resulting from, but not limited to, telephone calls, telegrams, travel expenses, lodging, duties and taxes, labor, rental or replacement equipment, loss of business or profits or other commercial losses.
5. **USE OF DEFECTIVE PRODUCT.** Continued use of Industrial Battery Charger after discovery of a defect VOIDS ALL WARRANTIES.
6. **ALTERED EQUIPMENT.** Except as authorized in writing, the warranty specified does not cover any equipment that has been altered by any party other than Prestolite.

EXCEPT AS STATED ABOVE, ALL OTHER WARRANTIES AND CONDITIONS, EITHER EXPRESSED OR IMPLIED, INCLUDING IMPLIED WARRANTIES OF MERCHANTABILITY AND FITNESS FOR A PARTICULAR PURPOSE, ARE EXCLUDED AND BUYER ASSUMES ALL RISK AND LIABILITY RESULTING FROM USE OF THE GOODS. PRESTOLITE NEITHER ASSUMES NOR AUTHORIZES ANY PERSONS TO ASSUME FOR PRESTOLITE ANY OTHER LIABILITY IN CONNECTION WITH THE SALE OR USE OF THE GOODS SOLD, AND THERE ARE NO ORAL AGREEMENTS OR WARRANTIES COLLATERAL TO OR AFFECTING THIS WRITTEN WARRANTY.

WARNING

At all times, safety must be considered an important factor in the installation, servicing, and operation of the product, and skilled, qualified technical assistance should be utilized.

AMETEK/PRESTOLITE POWER
TROY, OHIO USA

Data Sheet: 1140
Index: 110100
Replaces: 030196

 **AMETEK**[®]
PRESTOLITE POWER

